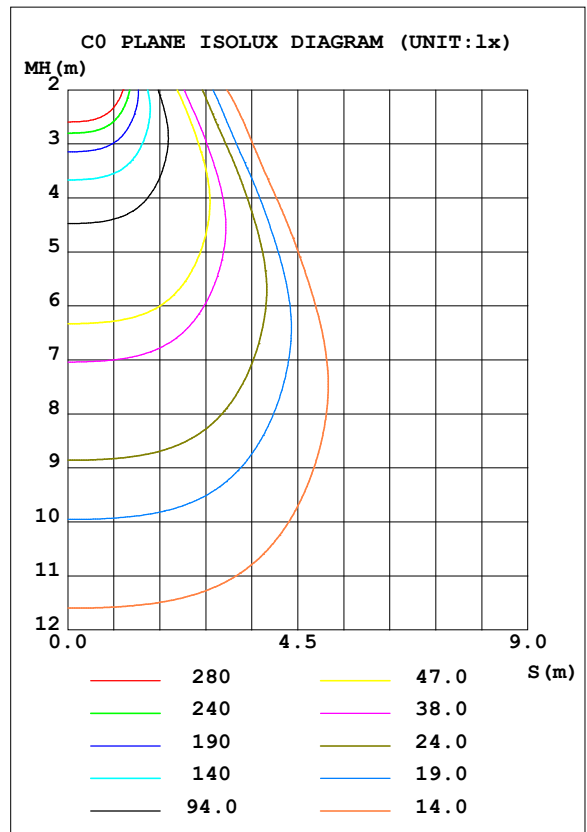
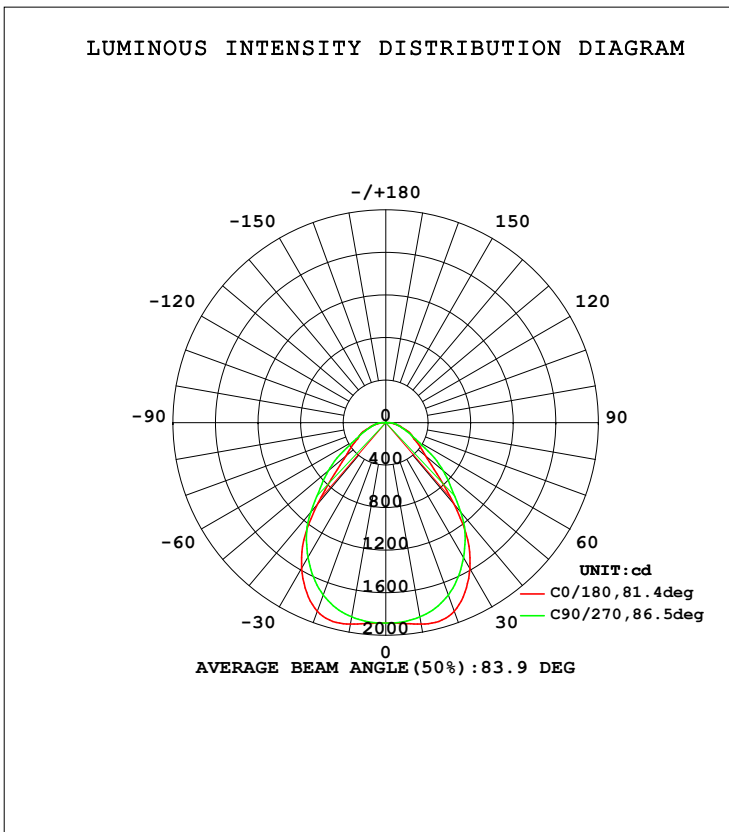


LUMINAIRE PHOTOMETRIC TEST REPORT

Test:U:221.8V I:0.1179A P:26.17W PF:0.9597 Lamp Flux:3781.29x1 lm		
NAME: 6262M	TYPE:LED	WEIGHT:
SPEC.:6262M-140LM/W-4000K-UGR	DIM.: 620*620	SERIAL No.:
MFR.: JT	SUR.:0.62*0.62	Shielding Angle:

DATA OF LAMP		PHOTOMETRIC DATA Eff: 144.51 lm/W			
MODEL	PL-6262-26S	Imax (cd)	1935	S/MH (C0/180)	1.17
NOMINAL POWER (W)	26	LOR (%)	100.0	S/MH (C90/270)	1.16
RATED VOLTAGE (V)	220-240	TOTAL FLUX (lm)	3781.3	η UP, DN (C0-180)	0.0, 50.0
NOMINAL FLUX (lm)	3781.29	CIE CLASS	DIRECT	η UP, DN (C180-360)	0.0, 50.0
LAMPS INSIDE	1	η up (%)	0.1	CIBSE SHR NOM	1.25
TEST VOLTAGE (V)	220	η down (%)	99.9	CIBSE SHR MAX	1.25



C Range: 0 - 360DEG  
 C Interval: 90.0DEG  
 Test Speed: HIGH  
 Temperature: 25.3DEG  
 Operators: TJC  
 Test Date: 2023-01-09

γ Range: 0 - 180DEG  
 γ Interval: 1.0DEG  
 Test System: EVERFINE GO-2000A\_V1 SYSTEM V2.0.295  
 Humidity: 65.0%  
 Test Distance: 7.560m [K=1.0079]  
 Remarks:

**ZONAL FLUX DIAGRAM**

ZONAL FLUX DIAGRAM:

$\gamma$	C0	C90	C180	C270				$\gamma$	$\Phi$ zone	$\Phi$ total	%lum,lamp
10	1923	1854	1923	1854				0- 10	180.2	180.2	4.77,4.77
20	1886	1724	1886	1724				10- 20	526.5	706.7	18.7,18.7
30	1582	1463	1582	1463				20- 30	772.4	1479	39.1,39.1
40	993.0	1097	993.0	1097				30- 40	816.5	2296	60.7,60.7
50	493.1	707.9	493.1	707.9				40- 50	609.9	2905	76.8,76.8
60	308.4	345.1	308.4	345.1				50- 60	409.8	3315	87.7,87.7
70	198.5	186.8	198.5	186.8				60- 70	254.8	3570	94.4,94.4
80	91.84	101.2	91.84	101.2				70- 80	149.8	3720	98.4,98.4
90	3.399	8.461	3.399	8.461				80- 90	58.82	3779	99.9,99.9
100	0	0	0	0				90-100	0.4620	3779	99.9,99.9
110	0	0	0	0				100-110	0	3779	99.9,99.9
120	0	0	0	0				110-120	0	3779	99.9,99.9
130	0.2720	0.2352	0.2720	0.2352				120-130	0.0727	3779	99.9,99.9
140	0.6960	0.6045	0.6960	0.6045				130-140	0.3496	3780	100,100
150	1.065	1.005	1.065	1.005				140-150	0.5227	3780	100,100
160	1.475	1.467	1.475	1.467				150-160	0.5701	3781	100,100
170	1.858	1.849	1.858	1.849				160-170	0.4680	3781	100,100
180	2.075	2.047	2.075	2.047				170-180	0.1853	3781	100,100
DEG	LUMINOUS INTENSITY:cd								UNIT:lm		

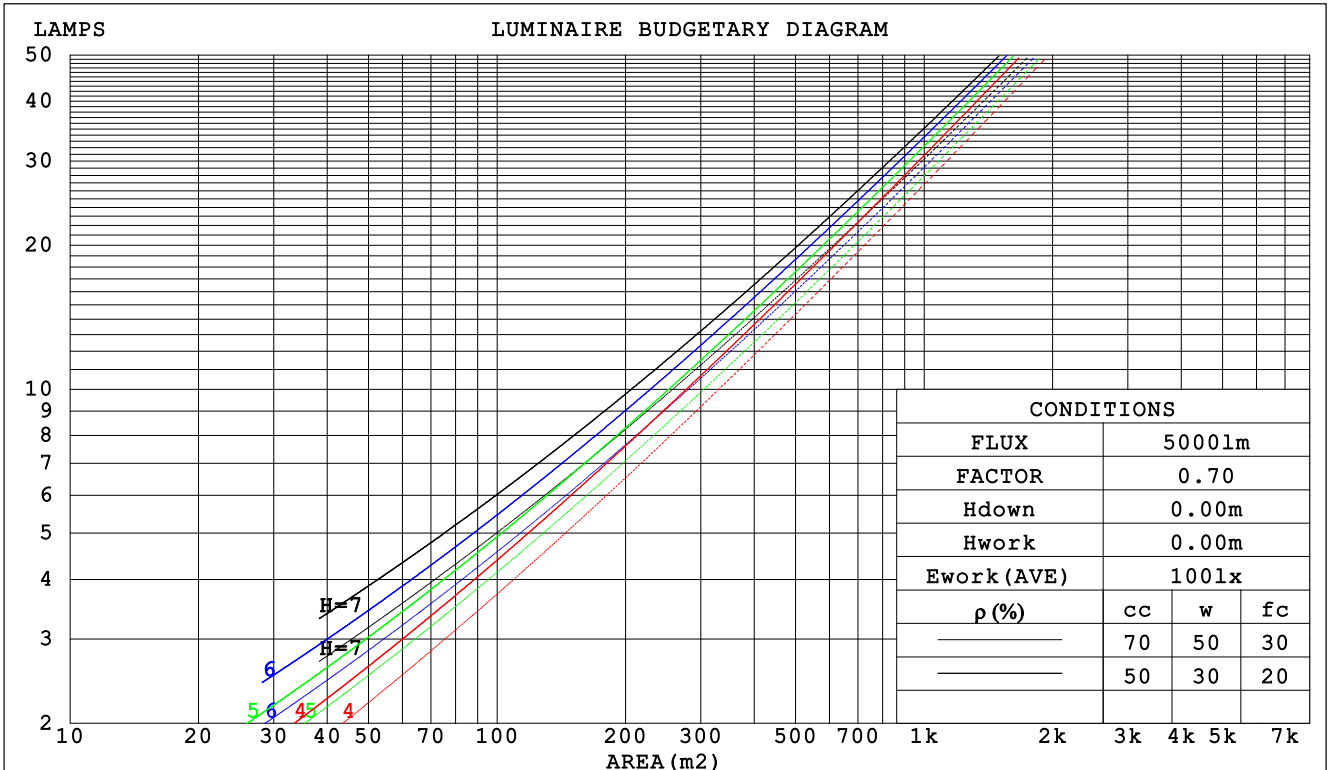
C Range: 0 - 360DEG  
 C Interval: 90.0DEG  
 Test Speed: HIGH  
 Temperature:25.3DEG  
 Operators:TJC  
 Test Date:2023-01-09

$\gamma$  Range: 0 - 180DEG  
 $\gamma$  Interval: 1.0DEG  
 Test System:EVERFINE GO-2000A\_V1 SYSTEM V2.0.295  
 Humidity:65.0%  
 Test Distance:7.560m [K=1.0079]  
 Remarks:

CU AND LUMINAIRE BUDGETARY ESTIMATE DIAGRAM

Test:U:221.8V I:0.1179A P:26.17W PF:0.9597 Lamp Flux:3781.29x1 lm		
NAME: 6262M	TYPE:LED	WEIGHT:
SPEC.:6262M-140LM/W-4000K-UGR	DIM.: 620*620	SERIAL No.:
MFR.: JT	SUR.:0.62*0.62	Shielding Angle:

$\rho_{cc}$	80%			70%			50%			30%			10%			0
$\rho_w$	50%	30%	10%	50%	30%	10%	50%	30%	10%	50%	30%	10%	50%	30%	10%	0
$\rho_{fc}$	20%			20%			20%			20%			20%			0
RCR	RCR:Room Cavity Ratio						Coefficients of Utilization(CU)									
0.0	1.19	1.19	1.19	1.16	1.16	1.16	1.11	1.11	1.11	1.06	1.06	1.06	1.02	1.02	1.02	.00
1.0	1.06	1.03	.99	1.04	1.01	.98	.90	.97	.95	.96	.94	.92	.92	.91	.89	.87
2.0	.95	.89	.84	.93	.88	.83	.90	.85	.81	.86	.83	.79	.83	.80	.78	.76
3.0	.85	.78	.72	.84	.77	.72	.81	.75	.70	.78	.73	.69	.76	.72	.68	.66
4.0	.77	.69	.63	.76	.68	.63	.73	.67	.62	.71	.65	.61	.69	.64	.60	.58
5.0	.70	.62	.56	.69	.61	.56	.67	.60	.55	.65	.59	.54	.63	.58	.54	.52
6.0	.64	.56	.50	.63	.55	.50	.61	.54	.49	.59	.53	.49	.58	.53	.48	.47
7.0	.58	.50	.45	.58	.50	.45	.56	.49	.44	.55	.49	.44	.53	.48	.44	.42
8.0	.54	.46	.41	.53	.46	.41	.52	.45	.40	.51	.45	.40	.50	.44	.40	.38
9.0	.50	.42	.37	.49	.42	.37	.48	.41	.37	.47	.41	.37	.46	.41	.36	.35
10.0	.46	.39	.34	.46	.39	.34	.45	.38	.34	.44	.38	.34	.43	.38	.34	.32



C Range: 0 - 360DEG  
 C Interval: 90.0DEG  
 Test Speed: HIGH  
 Temperature:25.3DEG  
 Operators:TJC  
 Test Date:2023-01-09

$\gamma$  Range: 0 - 180DEG  
 $\gamma$  Interval: 1.0DEG  
 Test System:EVERFINE GO-2000A\_V1 SYSTEM V2.0.295  
 Humidity:65.0%  
 Test Distance:7.560m [K=1.0079]  
 Remarks:

WEC AND CCEC

Test:U:221.8V I:0.1179A P:26.17W PF:0.9597 Lamp Flux:3781.29x1 lm		
NAME: 6262M	TYPE:LED	WEIGHT:
SPEC.:6262M-140LM/W-4000K-UGR	DIM.: 620*620	SERIAL No.:
MFR.: JT	SUR.:0.62*0.62	Shielding Angle:

ρcc	80%			70%			50%			30%			10%			0
ρw	50%	30%	10%	50%	30%	10%	50%	30%	10%	50%	30%	10%	50%	30%	10%	0
ρfc	20%			20%			20%			20%			20%			0
RCR	RCR:Room Cavity Ratio						Wall Exitance Coefficients (WEC)									
0.0																
1.0	.265	.150	.048	.258	.147	.047	.244	.140	.045	.232	.134	.043	.221	.128	.041	
2.0	.250	.137	.042	.244	.134	.041	.232	.129	.040	.222	.124	.039	.212	.120	.038	
3.0	.233	.124	.037	.228	.122	.037	.218	.118	.036	.209	.114	.035	.200	.111	.034	
4.0	.218	.113	.033	.213	.111	.033	.204	.108	.032	.196	.105	.032	.189	.102	.031	
5.0	.203	.104	.030	.199	.102	.030	.192	.100	.029	.184	.097	.029	.178	.095	.029	
6.0	.191	.096	.027	.187	.094	.027	.180	.092	.027	.174	.090	.027	.168	.088	.026	
7.0	.179	.088	.025	.176	.088	.025	.170	.086	.025	.164	.084	.024	.158	.082	.024	
8.0	.169	.082	.023	.166	.082	.023	.160	.080	.023	.155	.079	.023	.150	.077	.022	
9.0	.159	.077	.021	.157	.076	.021	.152	.075	.021	.147	.074	.021	.143	.072	.021	
10.0	.151	.072	.020	.148	.072	.020	.144	.070	.020	.140	.069	.020	.136	.068	.020	

ρcc	80%			70%			50%			30%			10%			0
ρw	50%	30%	10%	50%	30%	10%	50%	30%	10%	50%	30%	10%	50%	30%	10%	0
ρfc	20%			20%			20%			20%			20%			0
RCR	RCR:Room Cavity Ratio						Ceiling Cavity Exitance Coefficients (CCEC)									
0.0	.191	.191	.191	.163	.163	.163	.111	.111	.111	.064	.064	.064	.020	.020	.020	
1.0	.178	.157	.138	.152	.135	.119	.104	.093	.082	.060	.054	.048	.019	.017	.016	
2.0	.167	.133	.104	.143	.114	.090	.098	.079	.062	.057	.046	.037	.018	.015	.012	
3.0	.158	.115	.080	.135	.099	.069	.093	.069	.049	.054	.040	.029	.017	.013	.009	
4.0	.150	.101	.064	.128	.087	.055	.088	.061	.039	.051	.036	.023	.016	.012	.008	
5.0	.142	.090	.052	.122	.078	.045	.084	.054	.032	.049	.032	.019	.016	.010	.006	
6.0	.135	.081	.043	.116	.071	.037	.080	.049	.026	.046	.029	.016	.015	.009	.005	
7.0	.128	.074	.036	.111	.064	.032	.076	.045	.023	.044	.027	.013	.014	.009	.004	
8.0	.122	.068	.031	.105	.059	.027	.073	.042	.019	.042	.025	.012	.014	.008	.004	
9.0	.117	.064	.028	.101	.055	.024	.070	.039	.017	.041	.023	.010	.013	.008	.003	
10.0	.112	.059	.024	.096	.051	.021	.067	.036	.015	.039	.021	.009	.013	.007	.003	

C Range: 0 - 360DEG  
 C Interval: 90.0DEG  
 Test Speed: HIGH  
 Temperature:25.3DEG  
 Operators:TJC  
 Test Date:2023-01-09

γ Range: 0 - 180DEG  
 γ Interval: 1.0DEG  
 Test System:EVERFINE GO-2000A\_V1 SYSTEM V2.0.295  
 Humidity:65.0%  
 Test Distance:7.560m [K=1.0079]  
 Remarks:

**UGR(Unified Glare Rating) Table**

Test:U:221.8V I:0.1179A P:26.17W PF:0.9597 Lamp Flux:3781.29x1 lm										
NAME: 6262M					TYPE:LED			WEIGHT:		
SPEC.:6262M-140LM/W-4000K-UGR					DIM.: 620*620			SERIAL No.:		
MFR.: JT					SUR.:0.62*0.62			Shielding Angle:		
ceiling/cavity	0.7	0.7	0.5	0.5	0.3	0.7	0.7	0.5	0.5	0.3
walls	0.5	0.3	0.5	0.3	0.3	0.5	0.3	0.5	0.3	0.3
working plane	0.2	0.2	0.2	0.2	0.2	0.2	0.2	0.2	0.2	0.2
Room dimensions	Viewed crosswise					Viewed endwise				
x = 2H y = 2H	14.2	15.5	14.4	15.7	15.9	14.8	16.2	15.1	16.4	16.6
3H	15.2	16.5	15.5	16.7	16.9	15.6	16.8	15.9	17.1	17.3
4H	15.7	16.9	16.0	17.1	17.3	16.0	17.1	16.3	17.4	17.6
6H	16.1	17.2	16.4	17.5	17.7	16.4	17.5	16.7	17.7	18.0
8H	16.3	17.3	16.6	17.6	17.9	16.6	17.6	16.9	17.9	18.2
12H	16.4	17.4	16.7	17.7	18.0	16.8	17.8	17.1	18.1	18.4
4H 2H	14.6	15.7	14.9	16.0	16.2	15.1	16.3	15.4	16.5	16.8
3H	15.8	16.8	16.2	17.1	17.4	16.1	17.1	16.4	17.4	17.7
4H	16.4	17.4	16.8	17.7	18.0	16.6	17.5	17.0	17.8	18.2
6H	17.0	17.8	17.4	18.2	18.5	17.2	18.0	17.5	18.3	18.7
8H	17.2	18.0	17.6	18.3	18.7	17.5	18.2	17.9	18.6	19.0
12H	17.4	18.1	17.9	18.5	18.9	17.8	18.5	18.2	18.8	19.3
8H 4H	16.6	17.4	17.1	17.8	18.2	16.8	17.6	17.2	17.9	18.3
6H	17.4	18.0	17.8	18.4	18.8	17.5	18.2	18.0	18.6	19.0
8H	17.7	18.3	18.2	18.7	19.2	18.0	18.5	18.4	18.9	19.4
12H	18.1	18.5	18.5	19.0	19.5	18.4	18.9	18.9	19.3	19.8
12H 4H	16.7	17.4	17.1	17.7	18.2	16.8	17.5	17.2	17.9	18.3
6H	17.5	18.0	17.9	18.4	18.9	17.6	18.2	18.1	18.6	19.0
8H	17.9	18.3	18.3	18.8	19.3	18.1	18.6	18.6	19.0	19.5
Variations with the observer position at spacings:										
S = 1.0H	+ 0.4 / - 0.5					+ 0.3 / - 0.4				
1.5H	+ 0.4 / - 0.5					+ 0.2 / - 0.4				
2.0H	+ 0.5 / - 0.5					+ 0.8 / - 0.6				

CIE Pub.117 Corrected 3781 lm Total Lamp Luminous Flux. (8log(F/F0) = 4.6)

C Range: 0 - 360DEG  
 C Interval: 90.0DEG  
 Test Speed: HIGH  
 Temperature:25.3DEG  
 Operators:TJC  
 Test Date:2023-01-09

γ Range: 0 - 180DEG  
 γ Interval: 1.0DEG  
 Test System:EVERFINE GO-2000A\_V1 SYSTEM V2.0.295  
 Humidity:65.0%  
 Test Distance:7.560m [K=1.0079]  
 Remarks:

**UTILIZATION FACTORS TABLE**

Test:U:221.8V I:0.1179A P:26.17W PF:0.9597 Lamp Flux:3781.29x1 lm		
NAME: 6262M	TYPE:LED	WEIGHT:
SPEC.:6262M-140LM/W-4000K-UGR	DIM.: 620*620	SERIAL No.:
MFR.: JT	SUR.:0.62*0.62	Shielding Angle:

REFLECTANCE										
Ceiling	0.8	0.8	0.8	0.7	0.7	0.7	0.5	0.5	0.5	0
Walls	0.7	0.5	0.3	0.7	0.5	0.3	0.7	0.5	0.3	0
Working plane	0.2	0.2	0.2	0.2	0.2	0.2	0.2	0.2	0.2	0
ROOM INDEX	UTILIZATION FACTORS (PERCENT) $k(RI) \times RCR = 5$									
k = 0.60	67	57	51	66	57	51	65	57	51	45
0.80	77	67	61	76	67	61	74	66	60	54
1.00	84	75	69	83	74	69	81	75	68	62
1.25	90	82	76	89	81	75	86	80	75	68
1.50	94	86	81	93	86	80	90	84	79	73
2.00	100	93	88	98	92	87	95	90	85	79
2.50	103	97	92	101	95	91	97	93	89	81
3.00	106	100	95	104	98	94	100	96	92	84
4.00	109	104	100	107	102	99	103	99	96	88
5.00	111	107	103	108	105	102	104	101	99	90
ROOM INDEX	UF(total)									Direct
According to DIN EN 13032-2 2004			Suspended				SHRNOM = 1.25			

C Range: 0 - 360DEG  
 C Interval: 90.0DEG  
 Test Speed: HIGH  
 Temperature:25.3DEG  
 Operators:TJC  
 Test Date:2023-01-09

$\gamma$  Range: 0 - 180DEG  
 $\gamma$  Interval: 1.0DEG  
 Test System:EVERFINE GO-2000A\_V1 SYSTEM V2.0.295  
 Humidity:65.0%  
 Test Distance:7.560m [K=1.0079]  
 Remarks:

**ISOCANDELA DIAGRAM**

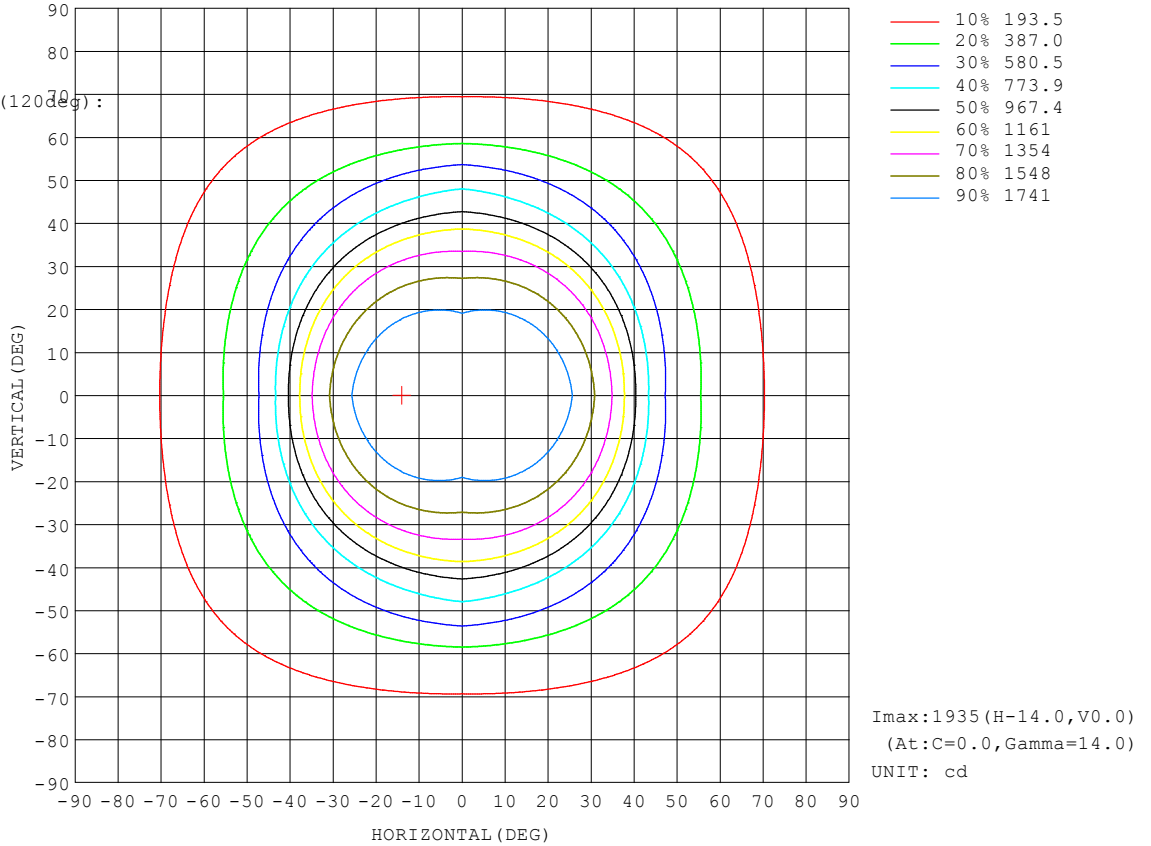
Test:U:221.8V I:0.1179A P:26.17W PF:0.9597 Lamp Flux:3781.29x1 lm		
NAME: 6262M	TYPE:LED	WEIGHT:
SPEC.:6262M-140LM/W-4000K-UGR	DIM.: 620*620	SERIAL No.:
MFR.: JT	SUR.:0.62*0.62	Shielding Angle:

Conical surface Flux(90deg):

2629.8 lm  
 %lum = 69.5%  
 %lamp = 69.5%

Conical surface Flux(120deg):

3315.3 lm  
 %lum = 87.7%  
 %lamp = 87.7%

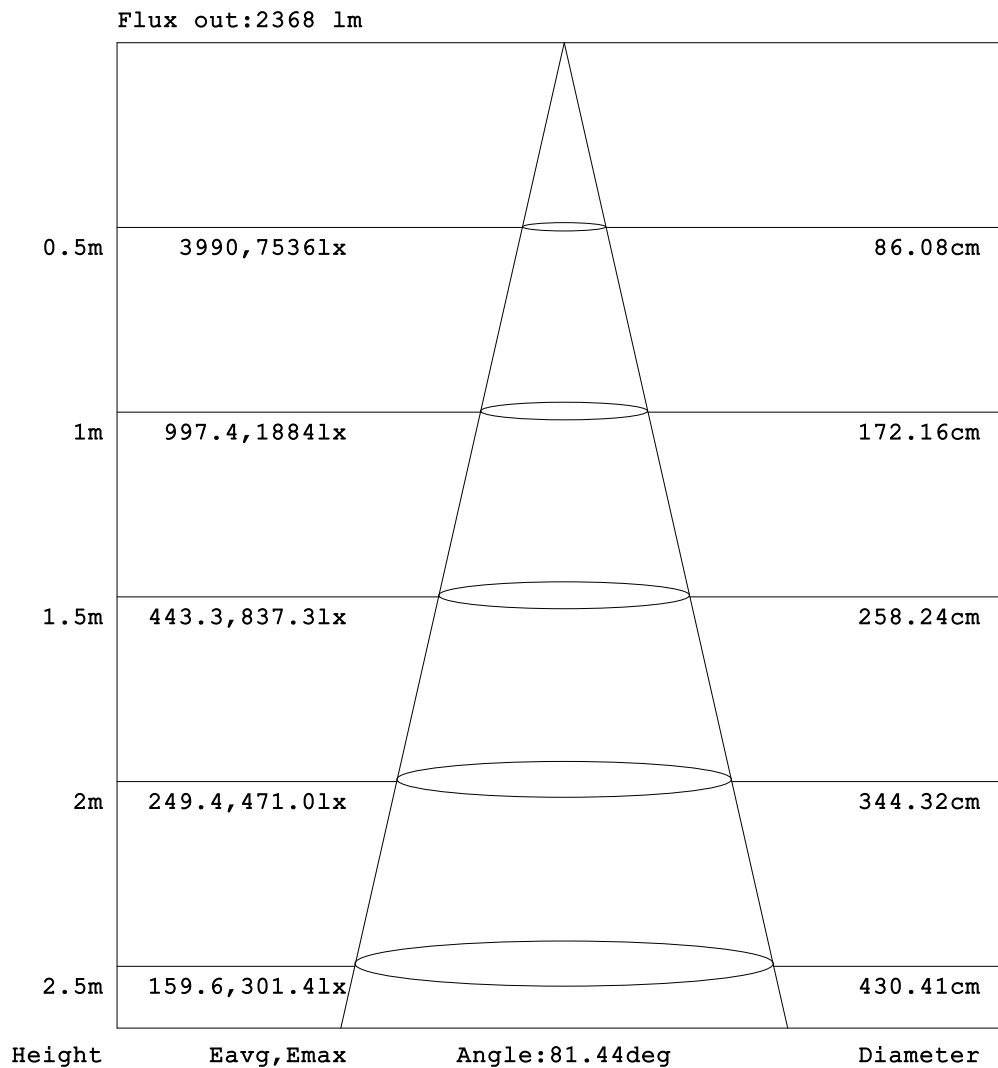


C Range: 0 - 360DEG  
 C Interval: 90.0DEG  
 Test Speed: HIGH  
 Temperature:25.3DEG  
 Operators:TJC  
 Test Date:2023-01-09

γ Range: 0 - 180DEG  
 γ Interval: 1.0DEG  
 Test System:EVERFINE GO-2000A\_V1 SYSTEM V2.0.295  
 Humidity:65.0%  
 Test Distance:7.560m [K=1.0079]  
 Remarks:

**AAI Figure**

Test:U:221.8V I:0.1179A P:26.17W PF:0.9597 Lamp Flux:3781.29x1 lm		
NAME: 6262M	TYPE:LED	WEIGHT:
SPEC.:6262M-140LM/W-4000K-UGR	DIM.: 620*620	SERIAL No.:
MFR.: JT	SUR.:0.62*0.62	Shielding Angle:



Note:The Curves indicate the illuminated area and the average illumination when the luminaire is at different distance.

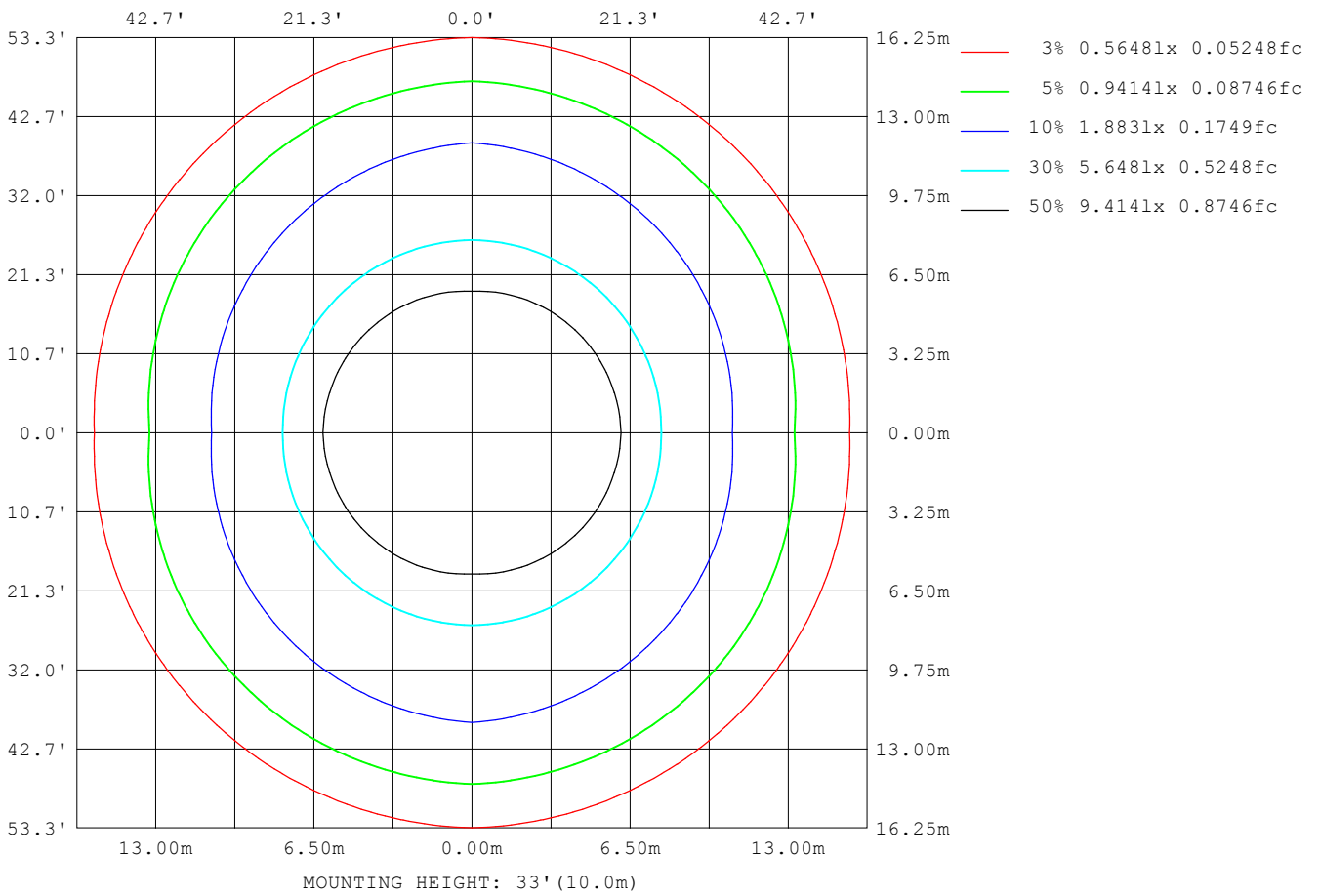
C Range: 0 - 360DEG  
 C Interval: 90.0DEG  
 Test Speed: HIGH  
 Temperature:25.3DEG  
 Operators:TJC  
 Test Date:2023-01-09

γ Range: 0 - 180DEG  
 γ Interval: 1.0DEG  
 Test System:EVERFINE GO-2000A\_V1 SYSTEM V2.0.295  
 Humidity:65.0%  
 Test Distance:7.560m [K=1.0079]  
 Remarks:



**ISOLUX DIAGRAM**

Test:U:221.8V I:0.1179A P:26.17W PF:0.9597 Lamp Flux:3781.29x1 lm		
NAME: 6262M	TYPE:LED	WEIGHT:
SPEC.:6262M-140LM/W-4000K-UGR	DIM.: 620*620	SERIAL No.:
MFR.: JT	SUR.:0.62*0.62	Shielding Angle:



C Range: 0 - 360DEG  
 C Interval: 90.0DEG  
 Test Speed: HIGH  
 Temperature:25.3DEG  
 Operators:TJC  
 Test Date:2023-01-09

γ Range: 0 - 180DEG  
 γ Interval: 1.0DEG  
 Test System:EVERFINE GO-2000A\_V1 SYSTEM V2.0.295  
 Humidity:65.0%  
 Test Distance:7.560m [K=1.0079]  
 Remarks:

**LED Avg.L Report**

Test:U:221.8V I:0.1179A P:26.17W PF:0.9597 Lamp Flux:3781.29x1 lm		
NAME: 6262M	TYPE:LED	WEIGHT:
SPEC.:6262M-140LM/W-4000K-UGR	DIM.: 620*620	SERIAL No.:
MFR.: JT	SUR.:0.62*0.62	Shielding Angle:

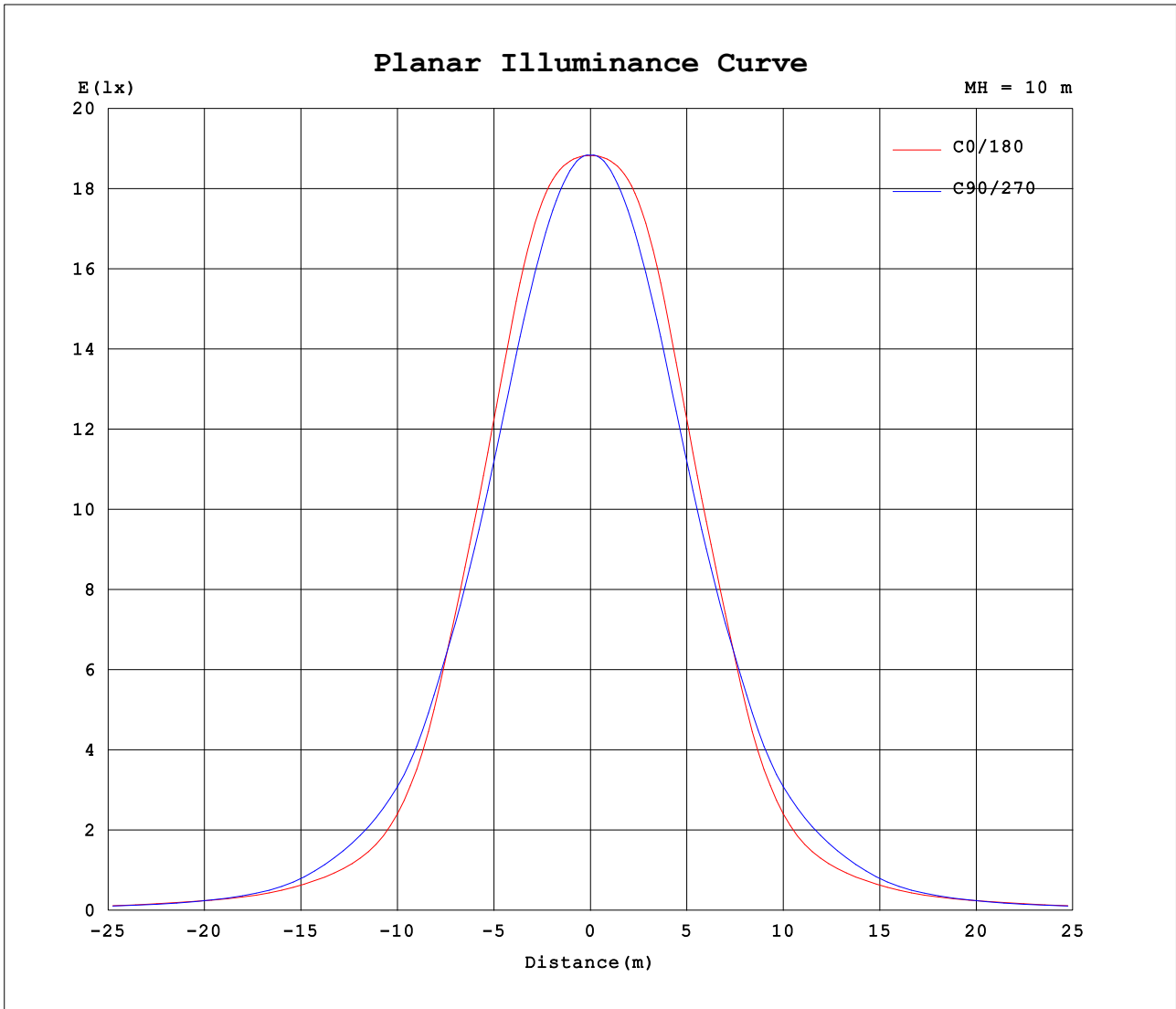
AvgL	cd/m2
L_0~180 (65) av	1647
L_0~180 (75) av	1502
L_0~180 (85) av	1517
L_90~270 (65) av	1551
L_90~270 (75) av	1390
L_90~270 (85) av	1958
L_45 (65) av	1587
L_45 (75) av	1432
L_45 (85) av	1792

Standard: GB/T 29293-2012

C Range: 0 - 360DEG  
 C Interval: 90.0DEG  
 Test Speed: HIGH  
 Temperature:25.3DEG  
 Operators:TJC  
 Test Date:2023-01-09

γ Range: 0 - 180DEG  
 γ Interval: 1.0DEG  
 Test System:EVERFINE GO-2000A\_V1 SYSTEM V2.0.295  
 Humidity:65.0%  
 Test Distance:7.560m [K=1.0079]  
 Remarks:

Planar Illuminance Curve



C Range: 0 - 360DEG  
 C Interval: 90.0DEG  
 Test Speed: HIGH  
 Temperature: 25.3DEG  
 Operators: TJC  
 Test Date: 2023-01-09

$\gamma$  Range: 0 - 180DEG  
 $\gamma$  Interval: 1.0DEG  
 Test System: EVERFINE GO-2000A\_V1 SYSTEM V2.0.295  
 Humidity: 65.0%  
 Test Distance: 7.560m [K=1.0079]  
 Remarks:

**LUMINOUS DISTRIBUTION INTENSITY DATA**

Test:U:221.8V I:0.1179A P:26.17W PF:0.9597 Lamp Flux:3781.29x1 lm		
NAME: 6262M	TYPE:LED	WEIGHT:
SPEC.:6262M-140LM/W-4000K-UGR	DIM.: 620*620	SERIAL No.:
MFR.: JT	SUR.:0.62*0.62	Shielding Angle:

Table--1

UNIT: cd

C (DEG) \ γ (DEG)	0	90	180	270															
0	1883	1884	1883	1884															
5	1895	1880	1895	1880															
10	1923	1854	1923	1854															
15	1934	1805	1934	1805															
20	1886	1724	1886	1724															
25	1762	1607	1762	1607															
30	1582	1463	1582	1463															
35	1346	1303	1346	1303															
40	993	1097	993	1097															
45	683	874	683	874															
50	493	708	493	708															
55	395	524	395	524															
60	308	345	308	345															
65	265	249	265	249															
70	199	187	199	187															
75	148	137	148	137															
80	91.8	101	91.8	101															
85	50.2	64.8	50.2	64.8															
90	3.40	8.46	3.40	8.46															
95	0.00	0.00	0.00	0.00															
100	0.00	0.00	0.00	0.00															
105	0.00	0.00	0.00	0.00															
110	0.00	0.00	0.00	0.00															
115	0.00	0.00	0.00	0.00															
120	0.00	0.00	0.00	0.00															
125	0.06	0.06	0.06	0.06															
130	0.27	0.24	0.27	0.24															
135	0.50	0.42	0.50	0.42															
140	0.70	0.60	0.70	0.60															
145	0.87	0.81	0.87	0.81															
150	1.06	1.01	1.06	1.01															
155	1.25	1.22	1.25	1.22															
160	1.48	1.47	1.48	1.47															
165	1.68	1.68	1.68	1.68															
170	1.86	1.85	1.86	1.85															
175	2.00	1.97	2.00	1.97															
180	2.07	2.05	2.07	2.05															

C Range: 0 - 360DEG  
 C Interval: 90.0DEG  
 Test Speed: HIGH  
 Temperature:25.3DEG  
 Operators:TJC  
 Test Date:2023-01-09

γ Range: 0 - 180DEG  
 γ Interval: 1.0DEG  
 Test System:EVERFINE GO-2000A\_V1 SYSTEM V2.0.295  
 Humidity:65.0%  
 Test Distance:7.560m [K=1.0079]  
 Remarks: