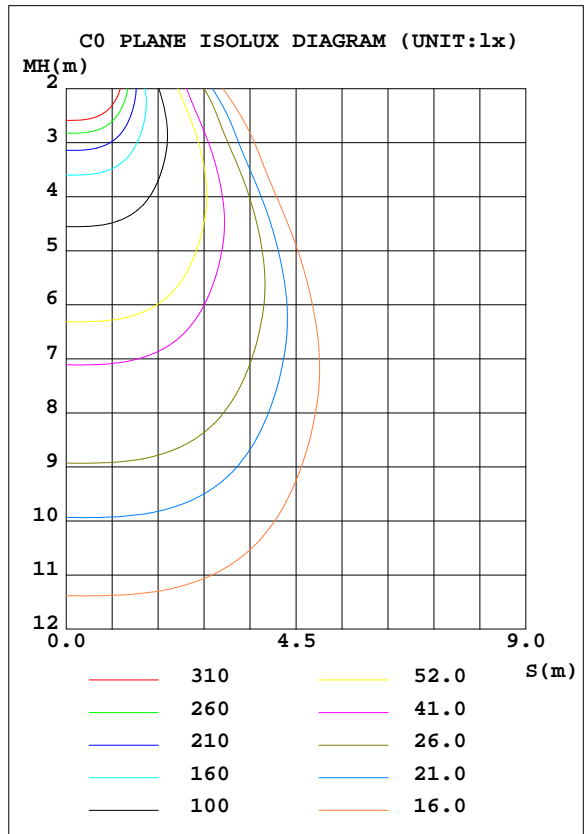
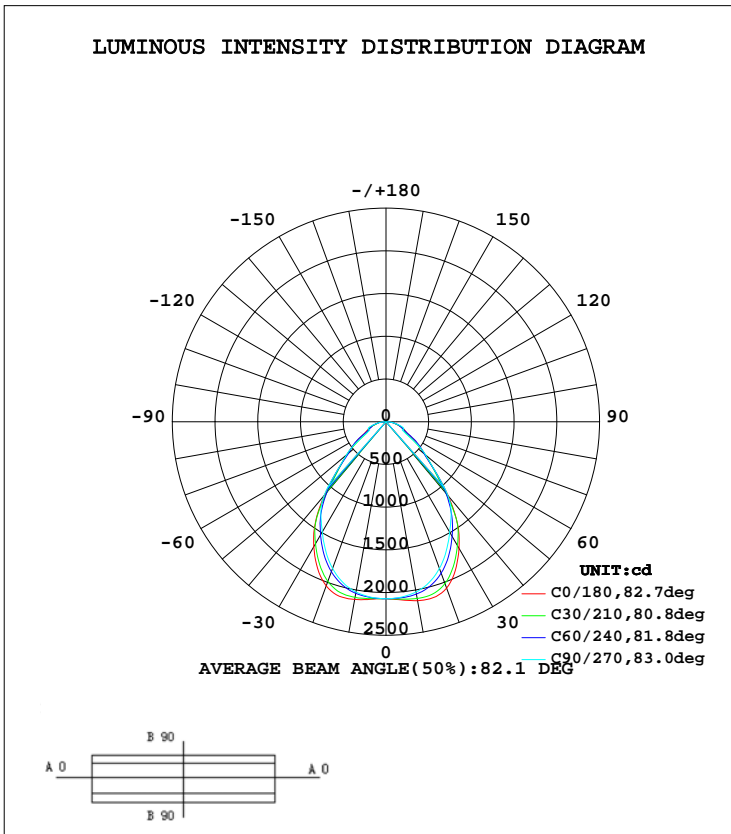


LUMINAIRE PHOTOMETRIC TEST REPORT

Test:U:222.1V I:0.1697A P:36.46W PF:0.9674 Lamp Flux:3925.22x1 lm		
NAME: Panel Light	TYPE:LED	WEIGHT:
SPEC.:6060	DIM.: 595*595*10mm	SERIAL No.:
MFR.: MGL	SUR.:0.595*0.595	Shielding Angle:

DATA OF LAMP		PHOTOMETRIC DATA Eff: 107.65 lm/W			
MODEIPL-6060-36S(4000K)-UGR		Imax(cd)	2136	S/MH(C0/180)	1.18
NOMINAL POWER(W)	36	LOR(%)	100.0	S/MH(C90/270)	1.10
RATED VOLTAGE(V)	220-240	TOTAL FLUX(lm)	3925.2	η UP, DN(C0-180)	0.2,49.8
NOMINAL FLUX(lm)	3925.22	CIE CLASS	DIRECT	η UP, DN(C180-360)	0.2,49.7
LAMPS INSIDE	1	η up(%)	0.5	CIBSE SHR NOM	1.00
TEST VOLTAGE(V)	221.4	η down(%)	99.5	CIBSE SHR MAX	1.15



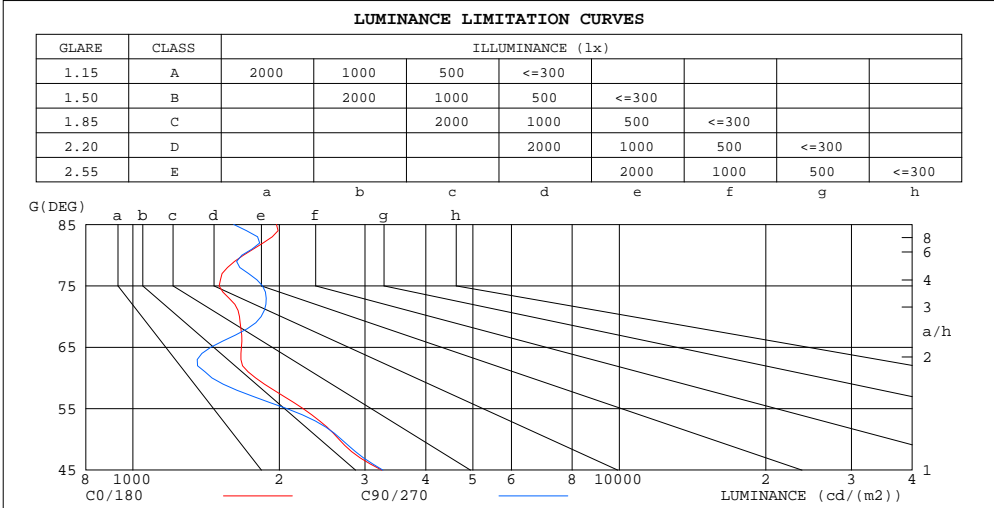
C Range: 0 - 360DEG
 C Interval: 30.0DEG
 Test Speed: HIGH
 Temperature:25DEG
 Operators:PLJ
 Test Date:2019-01-13*10MM

γ Range: 0 - 180DEG
 γ Interval: 1.0DEG
 Test System:EVERFINE GO-2000A_V1 SYSTEM V2.0.295
 Humidity:25%
 Test Distance:7.350m [K=1.0000]
 Remarks:

**ZONAL FLUX DIAGRAM
AND LUMINANCE LIMITATION CURVES**

ZONAL FLUX DIAGRAM:

γ	C0	C45	C90	C135	C180	C225	C270	C315	γ	Φ zone	Φ total	$\%lum, lamp$
10	2126	2074	2024	2064	2112	2064	2024	2074	0- 10	197.9	197.9	5.04,5.04
20	2074	1952	1828	1929	2045	1929	1828	1952	10- 20	571.7	769.6	19.6,19.6
30	1709	1611	1493	1592	1691	1592	1493	1611	20- 30	820.2	1590	40.5,40.5
40	1134	1093	1130	1075	1122	1075	1130	1093	30- 40	857.6	2447	62.4,62.4
50	596.9	590.7	604.0	586.3	597.9	586.3	604.0	590.7	40- 50	626.0	3073	78.3,78.3
60	312.9	301.1	254.4	290.5	317.3	290.5	254.4	301.1	50- 60	388.9	3462	88.2,88.2
70	198.2	190.6	219.6	196.4	194.9	196.4	219.6	190.6	60- 70	233.1	3695	94.1,94.1
80	102.6	97.14	101.8	101.0	104.4	101.0	101.8	97.14	70- 80	157.0	3852	98.1,98.1
90	0.6067	0.7000	0.4969	0.5151	0.5950	0.5151	0.4969	0.7000	80- 90	54.37	3907	99.5,99.5
100	0.7732	0.7998	0.8345	0.7875	0.7693	0.7875	0.8345	0.7998	90-100	0.6764	3908	99.5,99.5
110	1.326	1.392	1.444	1.369	1.321	1.369	1.444	1.392	100-110	1.126	3909	99.6,99.6
120	2.259	2.324	2.385	2.286	2.271	2.286	2.385	2.324	110-120	1.799	3910	99.6,99.6
130	3.446	3.474	3.483	3.428	3.468	3.428	3.483	3.474	120-130	2.568	3913	99.7,99.7
140	4.665	4.621	4.629	4.574	4.704	4.574	4.629	4.621	130-140	3.116	3916	99.8,99.8
150	5.753	5.741	5.812	5.715	5.779	5.715	5.812	5.741	140-150	3.240	3919	99.9,99.9
160	6.935	6.950	7.083	6.932	6.933	6.932	7.083	6.950	150-160	2.918	3922	99.9,99.9
170	8.007	8.053	8.036	8.077	7.999	8.077	8.036	8.053	160-170	2.122	3924	100,100
180	8.564	8.498	8.444	8.514	8.564	8.514	8.444	8.498	170-180	0.7882	3925	100,100
DEG	LUMINOUS INTENSITY:cd									UNIT:lm		



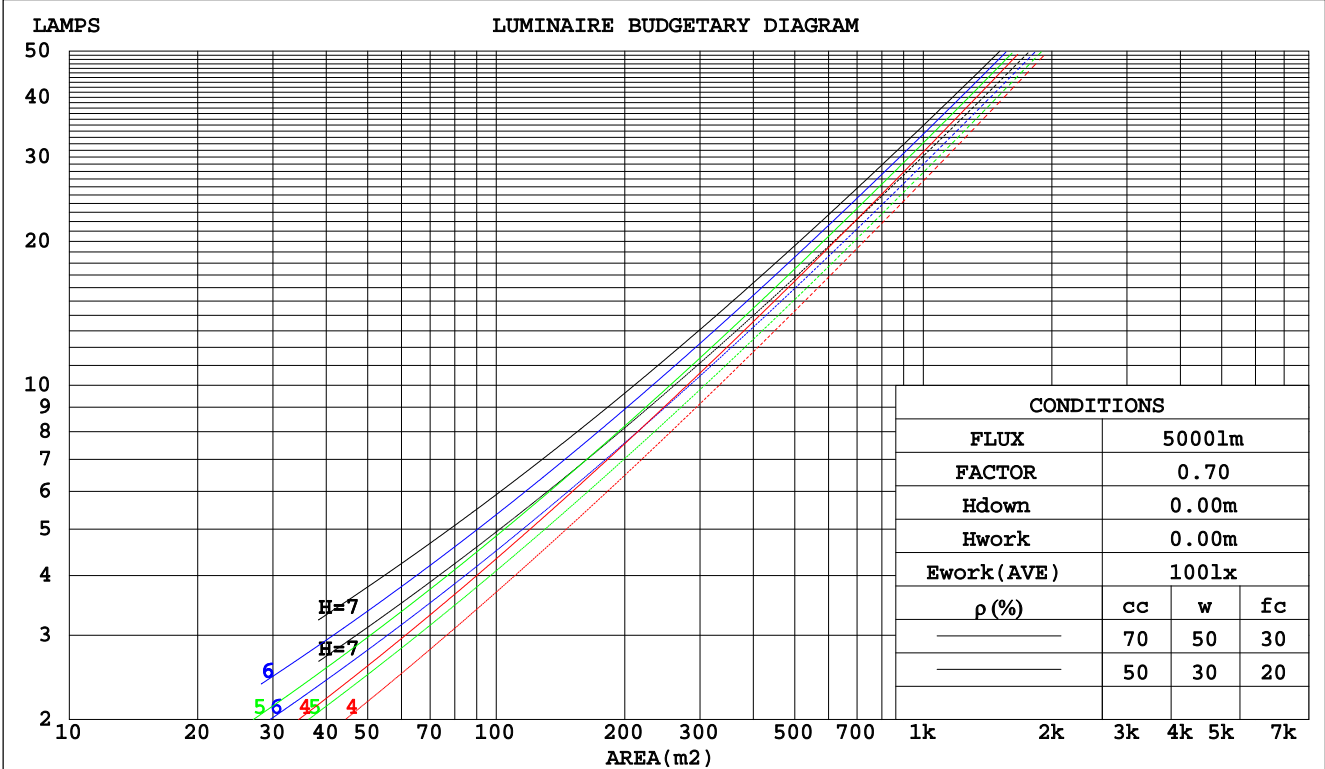
C Range: 0 - 360DEG
 C Interval: 30.0DEG
 Test Speed: HIGH
 Temperature: 25DEG
 Operators: PLJ
 Test Date: 2019-01-13*10MM

γ Range: 0 - 180DEG
 γ Interval: 1.0DEG
 Test System: EVERFINE GO-2000A_V1 SYSTEM V2.0.295
 Humidity: 25%
 Test Distance: 7.350m [K=1.0000]
 Remarks:

CU AND LUMINAIRE BUDGETARY ESTIMATE DIAGRAM

Test:U:222.1V I:0.1697A P:36.46W PF:0.9674 Lamp Flux:3925.22x1 lm		
NAME: Panel Light	TYPE:LED	WEIGHT:
SPEC.:6060	DIM.: 595*595*10mm	SERIAL No.:
MFR.: MGL	SUR.:0.595*0.595	Shielding Angle:

pcc	80%			70%			50%			30%			10%			0
pw	50%	30%	10%	50%	30%	10%	50%	30%	10%	50%	30%	10%	50%	30%	10%	0
pfc	20%			20%			20%			20%			20%			0
RCR	RCR:Room Cavity Ratio															
	Coefficients of Utilization(CU)															
0.0	1.19	1.19	1.19	1.16	1.16	1.16	1.11	1.11	1.11	1.06	1.06	1.06	1.02	1.02	1.02	.00
1.0	1.06	1.03	.00	1.04	1.01	.98	.00	.97	.95	.96	.94	.92	.92	.91	.89	.87
2.0	.95	.89	.85	.93	.88	.84	.90	.85	.82	.87	.83	.80	.84	.81	.78	.76
3.0	.86	.79	.73	.84	.78	.72	.81	.76	.71	.78	.74	.70	.76	.72	.69	.67
4.0	.77	.70	.64	.76	.69	.64	.74	.68	.63	.71	.66	.62	.69	.65	.61	.59
5.0	.70	.63	.57	.69	.62	.57	.67	.61	.56	.65	.60	.55	.64	.59	.55	.53
6.0	.64	.57	.51	.64	.56	.51	.62	.55	.50	.60	.54	.50	.59	.53	.49	.47
7.0	.59	.51	.46	.58	.51	.46	.57	.50	.45	.55	.50	.45	.54	.49	.45	.43
8.0	.55	.47	.42	.54	.47	.42	.53	.46	.41	.51	.45	.41	.50	.45	.41	.39
9.0	.51	.43	.38	.50	.43	.38	.49	.42	.38	.48	.42	.38	.47	.41	.37	.36
10.0	.47	.40	.35	.47	.40	.35	.46	.39	.35	.45	.39	.35	.44	.38	.34	.33



C Range: 0 - 360DEG
 C Interval: 30.0DEG
 Test Speed: HIGH
 Temperature:25DEG
 Operators:PLJ
 Test Date:2019-01-13*10MM

γ Range: 0 - 180DEG
 γ Interval: 1.0DEG
 Test System:EVERFINE GO-2000A_V1 SYSTEM V2.0.295
 Humidity:25%
 Test Distance:7.350m [K=1.0000]
 Remarks:

WEC AND CCEC

Test:U:222.1V I:0.1697A P:36.46W PF:0.9674 Lamp Flux:3925.22x1 lm		
NAME: Panel Light	TYPE:LED	WEIGHT:
SPEC.:6060	DIM.: 595*595*10mm	SERIAL No.:
MFR.: MGL	SUR.:0.595*0.595	Shielding Angle:

ρ_{cc}	80%			70%			50%			30%			10%			0
ρ_w	50%	30%	10%	50%	30%	10%	50%	30%	10%	50%	30%	10%	50%	30%	10%	0
ρ_{fc}	20%			20%			20%			20%			20%			0
RCR	RCR:Room Cavity Ratio						Wall Exitance Coefficients(WEC)									
0.0																
1.0	.259	.147	.047	.252	.144	.046	.239	.137	.044	.227	.131	.042	.215	.125	.040	
2.0	.245	.134	.041	.239	.131	.041	.227	.126	.039	.217	.121	.038	.207	.117	.037	
3.0	.229	.122	.036	.224	.120	.036	.214	.116	.035	.204	.112	.034	.196	.108	.033	
4.0	.214	.111	.033	.209	.109	.032	.200	.106	.032	.192	.103	.031	.184	.100	.031	
5.0	.200	.102	.030	.196	.101	.029	.188	.098	.029	.181	.095	.028	.174	.093	.028	
6.0	.188	.094	.027	.184	.093	.027	.177	.091	.026	.170	.089	.026	.164	.086	.026	
7.0	.176	.087	.025	.173	.086	.025	.167	.084	.024	.161	.083	.024	.155	.081	.024	
8.0	.166	.081	.023	.163	.080	.023	.158	.079	.023	.152	.077	.022	.147	.076	.022	
9.0	.157	.076	.021	.154	.075	.021	.149	.074	.021	.145	.073	.021	.140	.071	.021	
10.0	.149	.071	.020	.146	.071	.020	.142	.070	.020	.138	.068	.019	.133	.067	.019	

ρ_{cc}	80%			70%			50%			30%			10%			0
ρ_w	50%	30%	10%	50%	30%	10%	50%	30%	10%	50%	30%	10%	50%	30%	10%	0
ρ_{fc}	20%			20%			20%			20%			20%			0
RCR	RCR:Room Cavity Ratio						Ceiling Cavity Exitance Coefficients(CCEC)									
0.0	.194	.194	.194	.166	.166	.166	.113	.113	.113	.065	.065	.065	.021	.021	.021	
1.0	.180	.160	.142	.154	.137	.122	.106	.095	.084	.061	.055	.049	.019	.018	.016	
2.0	.170	.136	.107	.145	.117	.093	.100	.081	.065	.057	.047	.038	.018	.015	.012	
3.0	.160	.118	.084	.137	.101	.073	.094	.071	.051	.054	.041	.030	.017	.013	.010	
4.0	.152	.104	.067	.130	.090	.058	.090	.063	.041	.052	.037	.024	.017	.012	.008	
5.0	.144	.093	.055	.124	.081	.048	.085	.056	.034	.049	.033	.020	.016	.011	.007	
6.0	.137	.084	.047	.118	.073	.041	.081	.051	.029	.047	.030	.017	.015	.010	.006	
7.0	.131	.077	.040	.112	.067	.035	.078	.047	.025	.045	.028	.015	.015	.009	.005	
8.0	.125	.071	.035	.107	.062	.030	.074	.043	.022	.043	.026	.013	.014	.008	.004	
9.0	.119	.066	.031	.103	.058	.027	.071	.041	.019	.041	.024	.011	.013	.008	.004	
10.0	.114	.062	.028	.098	.054	.024	.068	.038	.017	.040	.022	.010	.013	.007	.003	

C Range: 0 - 360DEG
C Interval: 30.0DEG
Test Speed: HIGH
Temperature:25DEG
Operators:PLJ
Test Date:2019-01-13*10MM

γ Range: 0 - 180DEG
 γ Interval: 1.0DEG
Test System:EVERFINE GO-2000A_V1 SYSTEM V2.0.295
Humidity:25%
Test Distance:7.350m [K=1.0000]
Remarks:

UGR(Unified Glare Rating) Table

Test:U:222.1V I:0.1697A P:36.46W PF:0.9674 Lamp Flux:3925.22x1 lm										
NAME: Panel Light					TYPE:LED			WEIGHT:		
SPEC.:6060					DIM.: 595*595*10mm			SERIAL No.:		
MFR.: MGL					SUR.:0.595*0.595			Shielding Angle:		
ceiling/cavity	0.7	0.7	0.5	0.5	0.3	0.7	0.7	0.5	0.5	0.3
walls	0.5	0.3	0.5	0.3	0.3	0.5	0.3	0.5	0.3	0.3
working plane	0.2	0.2	0.2	0.2	0.2	0.2	0.2	0.2	0.2	0.2
Room dimensions	Viewed crosswise					Viewed endwise				
x = 2H y = 2H	14.5	15.8	14.8	16.0	16.2	14.5	15.8	14.7	16.0	16.2
3H	15.4	16.7	15.7	16.9	17.1	15.4	16.6	15.7	16.9	17.1
4H	15.9	17.0	16.2	17.3	17.5	16.0	17.2	16.3	17.4	17.7
6H	16.3	17.4	16.6	17.6	17.9	16.5	17.6	16.8	17.8	18.1
8H	16.5	17.6	16.9	17.8	18.1	16.7	17.7	17.0	18.0	18.3
12H	16.7	17.7	17.1	18.0	18.3	16.8	17.8	17.2	18.1	18.4
4H 2H	14.8	15.9	15.1	16.2	16.4	14.7	15.9	15.0	16.1	16.4
3H	16.0	17.0	16.3	17.3	17.6	15.9	16.9	16.3	17.2	17.5
4H	16.6	17.5	16.9	17.8	18.1	16.7	17.6	17.1	17.9	18.3
6H	17.1	17.9	17.5	18.3	18.6	17.3	18.1	17.7	18.5	18.8
8H	17.4	18.2	17.9	18.6	18.9	17.6	18.3	18.0	18.7	19.1
12H	17.7	18.4	18.2	18.8	19.2	17.8	18.5	18.2	18.9	19.3
8H 4H	16.8	17.5	17.2	17.9	18.3	16.9	17.7	17.4	18.1	18.4
6H	17.5	18.2	18.0	18.6	19.0	17.7	18.3	18.2	18.7	19.2
8H	18.0	18.5	18.4	18.9	19.4	18.1	18.6	18.5	19.1	19.5
12H	18.4	18.8	18.9	19.3	19.8	18.4	18.8	18.9	19.3	19.8
12H 4H	16.8	17.5	17.2	17.9	18.3	17.0	17.6	17.4	18.0	18.4
6H	17.6	18.2	18.1	18.6	19.0	17.8	18.3	18.2	18.7	19.2
8H	18.1	18.6	18.6	19.0	19.5	18.2	18.7	18.7	19.1	19.6
Variations with the observer position at spacings:										
S = 1.0H	+ 0.4 / - 0.5					+ 0.3 / - 0.5				
1.5H	+ 0.4 / - 0.3					+ 0.3 / - 0.2				
2.0H	+ 0.9 / - 0.6					+ 0.8 / - 0.9				

CIE Pub.117 Corrected 3925 lm Total Lamp Luminous Flux.(8log(F/F0) = 4.8)

C Range: 0 - 360DEG
C Interval: 30.0DEG
Test Speed: HIGH
Temperature:25DEG
Operators:PLJ
Test Date:2019-01-13*10MM

γ Range: 0 - 180DEG
 γ Interval: 1.0DEG
Test System:EVERFINE GO-2000A_V1 SYSTEM V2.0.295
Humidity:25%
Test Distance:7.350m [K=1.0000]
Remarks:

UTILIZATION FACTORS TABLE

Test:U:222.1V I:0.1697A P:36.46W PF:0.9674 Lamp Flux:3925.22x1 lm		
NAME: Panel Light	TYPE:LED	WEIGHT:
SPEC.:6060	DIM.: 595*595*10mm	SERIAL No.:
MFR.: MGL	SUR.:0.595*0.595	Shielding Angle:

REFLECTANCE										
Ceiling	0.8	0.8	0.8	0.7	0.7	0.7	0.5	0.5	0.5	0
Walls	0.7	0.5	0.3	0.7	0.5	0.3	0.7	0.5	0.3	0
Working plane	0.2	0.2	0.2	0.2	0.2	0.2	0.2	0.2	0.2	0
ROOM INDEX	UTILIZATION FACTORS(PERCENT) $k(RI) \times RCR = 5$									
k = 0.60	68	58	53	67	58	52	66	58	52	47
0.80	78	68	62	77	68	62	75	67	61	56
1.00	85	76	70	84	75	70	82	76	69	63
1.25	91	82	77	90	82	76	87	80	76	69
1.50	95	87	82	94	86	81	91	85	80	74
2.00	100	94	88	99	92	88	95	90	86	79
2.50	103	97	92	101	96	91	98	93	89	82
3.00	106	100	96	104	99	95	100	96	93	85
4.00	109	104	101	107	103	99	103	99	96	88
5.00	111	107	104	108	105	102	104	101	99	90
ROOM INDEX	UF(total)									Direct
According to DIN EN 13032-2 2004			Suspended				SHRNOM = 1.25			

C Range: 0 - 360DEG
C Interval: 30.0DEG
Test Speed: HIGH
Temperature:25DEG
Operators:PLJ
Test Date:2019-01-13*10MM

γ Range: 0 - 180DEG
 γ Interval: 1.0DEG
Test System:EVERFINE GO-2000A_V1 SYSTEM V2.0.295
Humidity:25%
Test Distance:7.350m [K=1.0000]
Remarks:

ISOCANDELA DIAGRAM

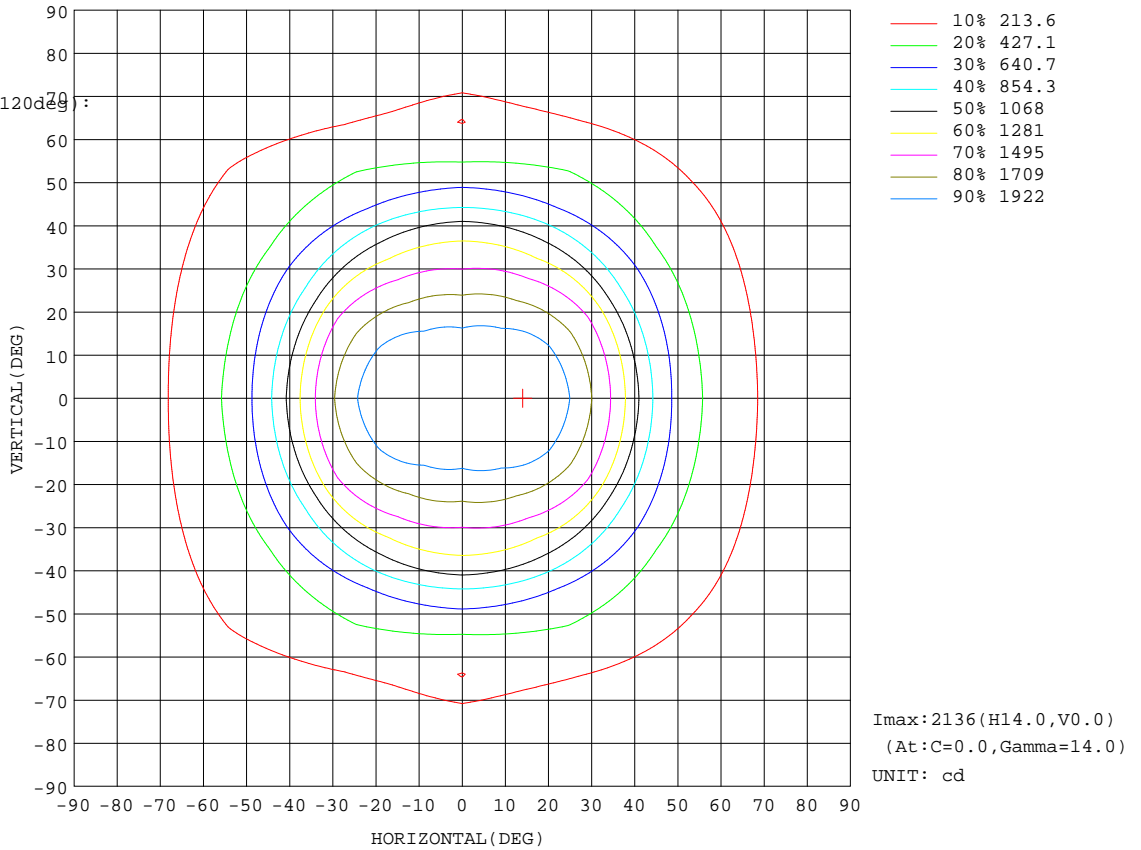
Test:U:222.1V I:0.1697A P:36.46W PF:0.9674 Lamp Flux:3925.22x1 lm		
NAME: Panel Light	TYPE:LED	WEIGHT:
SPEC.:6060	DIM.: 595*595*10mm	SERIAL No.:
MFR.: MGL	SUR.:0.595*0.595	Shielding Angle:

Conical surface Flux(90deg):

2796.2 lm
 %lum = 71.2%
 %lamp = 71.2%

Conical surface Flux(120deg):

3462.3 lm
 %lum = 88.2%
 %lamp = 88.2%

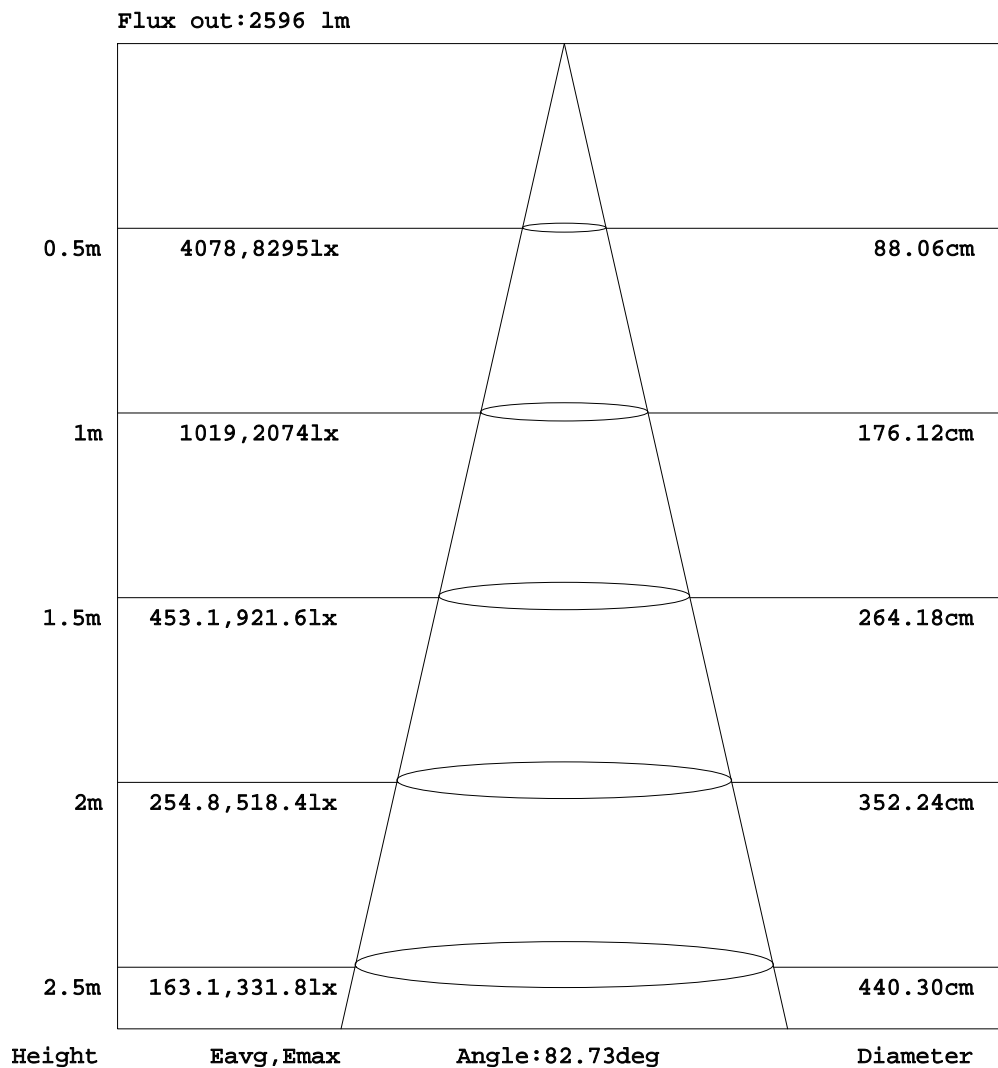


C Range: 0 - 360DEG
 C Interval: 30.0DEG
 Test Speed: HIGH
 Temperature: 25DEG
 Operators: PLJ
 Test Date: 2019-01-13*10MM

γ Range: 0 - 180DEG
 γ Interval: 1.0DEG
 Test System: EVERFINE GO-2000A_V1 SYSTEM V2.0.295
 Humidity: 25%
 Test Distance: 7.350m [K=1.0000]
 Remarks:

AAI Figure

Test:U:222.1V I:0.1697A P:36.46W PF:0.9674 Lamp Flux:3925.22x1 lm		
NAME: Panel Light	TYPE:LED	WEIGHT:
SPEC.:6060	DIM.: 595*595*10mm	SERIAL No.:
MFR.: MGL	SUR.:0.595*0.595	Shielding Angle:



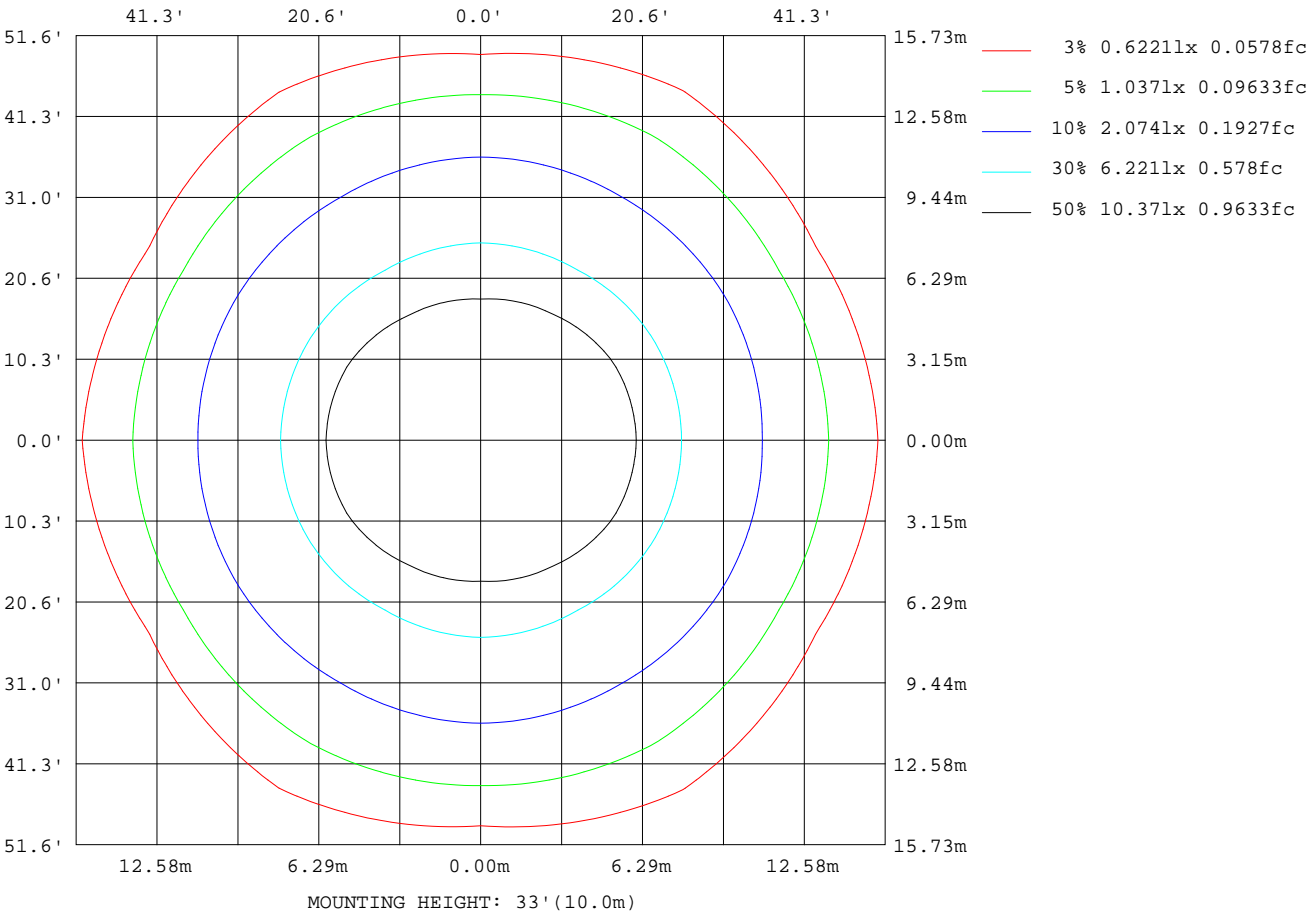
Note:The Curves indicate the illuminated area and the average illumination when the luminaire is at different distance.

C Range: 0 - 360DEG
 C Interval: 30.0DEG
 Test Speed: HIGH
 Temperature:25DEG
 Operators:PLJ
 Test Date:2019-01-13*10MM

γ Range: 0 - 180DEG
 γ Interval: 1.0DEG
 Test System:EVERFINE GO-2000A_V1 SYSTEM V2.0.295
 Humidity:25%
 Test Distance:7.350m [K=1.0000]
 Remarks:

ISOLUX DIAGRAM

Test:U:222.1V I:0.1697A P:36.46W PF:0.9674 Lamp Flux:3925.22x1 lm		
NAME: Panel Light	TYPE:LED	WEIGHT:
SPEC.:6060	DIM.: 595*595*10mm	SERIAL No.:
MFR.: MGL	SUR.:0.595*0.595	Shielding Angle:



C Range: 0 - 360DEG
 C Interval: 30.0DEG
 Test Speed: HIGH
 Temperature:25DEG
 Operators:PLJ
 Test Date:2019-01-13*10MM

γ Range: 0 - 180DEG
 γ Interval: 1.0DEG
 Test System:EVERFINE GO-2000A_V1 SYSTEM V2.0.295
 Humidity:25%
 Test Distance:7.350m [K=1.0000]
 Remarks:

LED Avg.L Report

Test:U:222.1V I:0.1697A P:36.46W PF:0.9674 Lamp Flux:3925.22x1 lm		
NAME: Panel Light	TYPE:LED	WEIGHT:
SPEC.:6060	DIM.: 595*595*10mm	SERIAL No.:
MFR.: MGL	SUR.:0.595*0.595	Shielding Angle:

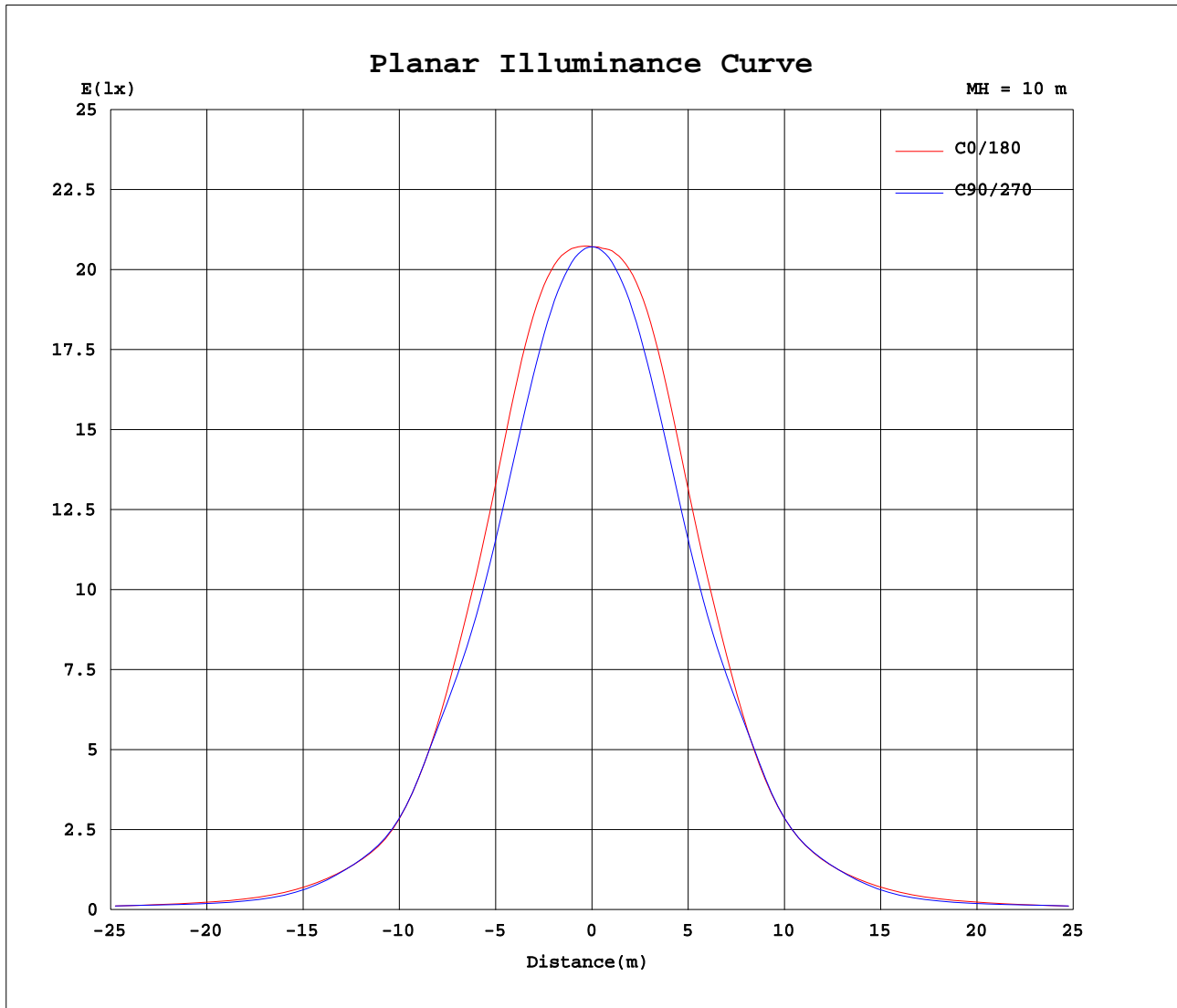
AvgL	cd/m2
L_0~180(65)av	1672
L_0~180(75)av	1519
L_0~180(85)av	1957
L_90~270(65)av	1446
L_90~270(75)av	1848
L_90~270(85)av	1612
L_45(65)av	1565
L_45(75)av	1616
L_45(85)av	1584

Standard: GB/T 29293-2012

C Range: 0 - 360DEG
C Interval: 30.0DEG
Test Speed: HIGH
Temperature:25DEG
Operators:PLJ
Test Date:2019-01-13*10MM

γ Range: 0 - 180DEG
 γ Interval: 1.0DEG
Test System:EVERFINE GO-2000A_V1 SYSTEM V2.0.295
Humidity:25%
Test Distance:7.350m [K=1.0000]
Remarks:

Planar Illuminance Curve



C Range: 0 - 360DEG
 C Interval: 30.0DEG
 Test Speed: HIGH
 Temperature: 25DEG
 Operators: PLJ
 Test Date: 2019-01-13*10MM

γ Range: 0 - 180DEG
 γ Interval: 1.0DEG
 Test System: EVERFINE GO-2000A_V1 SYSTEM V2.0.295
 Humidity: 25%
 Test Distance: 7.350m [K=1.0000]
 Remarks:

LUMINOUS DISTRIBUTION INTENSITY DATA

Test:U:222.1V I:0.1697A P:36.46W PF:0.9674 Lamp Flux:3925.22x1 lm		
NAME: Panel Light	TYPE:LED	WEIGHT:
SPEC.:6060	DIM.: 595*595*10mm	SERIAL No.:
MFR.: MGL	SUR.:0.595*0.595	Shielding Angle:

Table--1

UNIT: cd

C(DEG) γ (DEG)	0	30	60	90	120	150	180	210	240	270	300	330						
0	2072	2071	2071	2072	2072	2072	2071	2072	2072	2072	2071	2071						
5	2093	2084	2068	2061	2065	2077	2086	2077	2065	2061	2068	2084						
10	2126	2100	2048	2024	2040	2087	2112	2087	2040	2024	2048	2100						
15	2132	2091	1992	1948	1977	2070	2113	2070	1977	1948	1992	2091						
20	2074	2017	1887	1828	1869	1990	2045	1990	1869	1828	1887	2017						
25	1920	1867	1734	1670	1716	1840	1896	1840	1716	1670	1734	1867						
30	1709	1673	1548	1493	1533	1651	1691	1651	1533	1493	1548	1673						
35	1461	1456	1343	1330	1332	1435	1442	1435	1332	1330	1343	1456						
40	1134	1092	1093	1130	1081	1070	1122	1070	1081	1130	1093	1092						
45	804	793	805	809	799	782	807	782	799	809	805	793						
50	597	599	583	604	574	599	598	599	574	604	583	599						
55	449	415	468	416	461	401	451	401	461	416	468	415						
60	313	271	331	254	318	263	317	263	318	254	331	271						
65	247	234	237	214	225	229	247	229	225	214	237	234						
70	198	196	185	220	183	210	195	210	183	220	185	196						
75	136	140	154	167	159	135	139	135	159	167	154	140						
80	103	98.0	96.3	102	101	101	104	101	101	102	96.3	98.0						
85	60.2	50.6	46.5	49.2	47.1	51.8	59.2	51.8	47.1	49.2	46.5	50.6						
90	0.61	0.77	0.63	0.50	0.54	0.49	0.59	0.49	0.54	0.50	0.63	0.77						
95	0.59	0.60	0.62	0.62	0.61	0.59	0.57	0.59	0.61	0.62	0.62	0.60						
100	0.77	0.78	0.82	0.83	0.81	0.77	0.77	0.77	0.81	0.83	0.82	0.78						
105	1.02	1.04	1.08	1.11	1.07	1.03	1.01	1.03	1.07	1.11	1.08	1.04						
110	1.33	1.37	1.41	1.44	1.38	1.36	1.32	1.36	1.38	1.44	1.41	1.37						
115	1.75	1.78	1.85	1.88	1.79	1.79	1.74	1.79	1.79	1.88	1.85	1.78						
120	2.26	2.31	2.34	2.39	2.27	2.30	2.27	2.30	2.27	2.39	2.34	2.31						
125	2.84	2.89	2.88	2.92	2.82	2.86	2.84	2.86	2.82	2.92	2.88	2.89						
130	3.45	3.49	3.46	3.48	3.40	3.45	3.47	3.45	3.40	3.48	3.46	3.49						
135	4.07	4.08	4.03	4.05	3.98	4.03	4.10	4.03	3.98	4.05	4.03	4.08						
140	4.66	4.65	4.60	4.63	4.56	4.59	4.70	4.59	4.56	4.63	4.60	4.65						
145	5.22	5.18	5.17	5.21	5.14	5.15	5.25	5.15	5.14	5.21	5.17	5.18						
150	5.75	5.73	5.75	5.81	5.72	5.71	5.78	5.71	5.72	5.81	5.75	5.73						
155	6.30	6.29	6.37	6.43	6.31	6.30	6.32	6.30	6.31	6.43	6.37	6.29						
160	6.94	6.91	6.99	7.08	6.95	6.92	6.93	6.92	6.95	7.08	6.99	6.91						
165	7.51	7.52	7.59	7.63	7.58	7.54	7.50	7.54	7.58	7.63	7.59	7.52						
170	8.01	8.00	8.11	8.04	8.05	8.10	8.00	8.10	8.05	8.04	8.11	8.00						
175	8.38	8.32	8.38	8.31	8.34	8.42	8.38	8.42	8.34	8.31	8.38	8.32						
180	8.56	8.52	8.48	8.44	8.53	8.50	8.56	8.50	8.53	8.44	8.48	8.52						

C Range: 0 - 360DEG
 C Interval: 30.0DEG
 Test Speed: HIGH
 Temperature:25DEG
 Operators:PLJ
 Test Date:2019-01-13*10MM

γ Range: 0 - 180DEG
 γ Interval: 1.0DEG
 Test System:EVERFINE GO-2000A_V1 SYSTEM V2.0.295
 Humidity:25%
 Test Distance:7.350m [K=1.0000]
 Remarks: