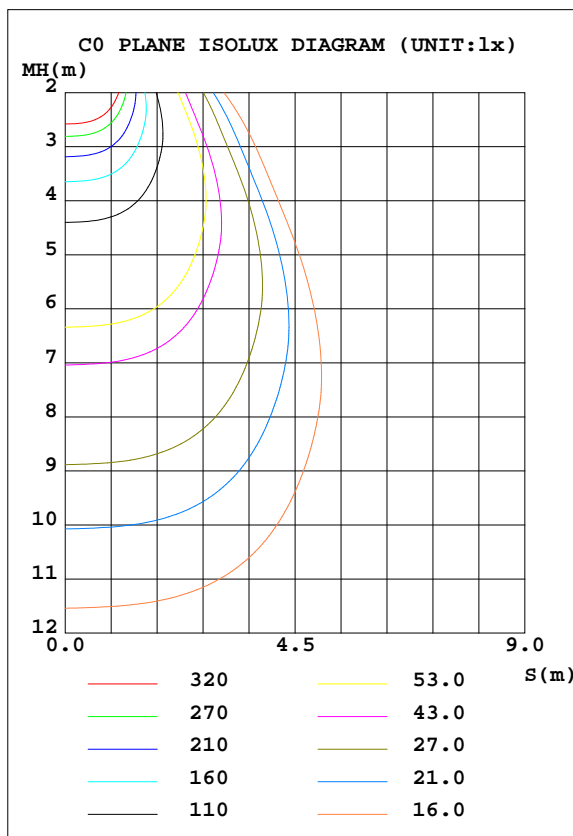
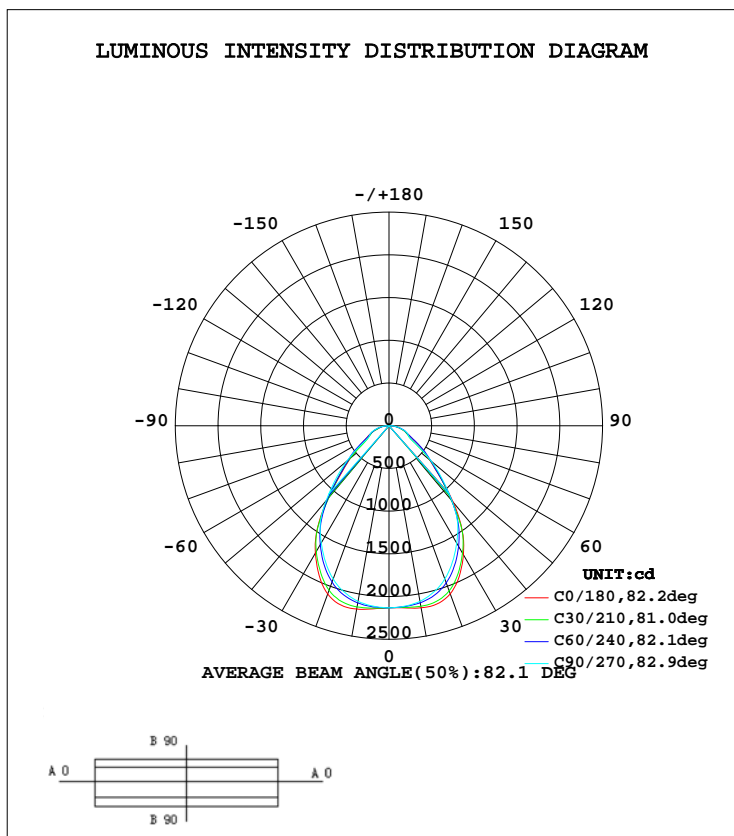


LUMINAIRE PHOTOMETRIC TEST REPORT

Test:U:222.1V I:0.1724A P:36.99W PF:0.9659 Lamp Flux:4064.95x1 lm		
NAME:	TYPE:LED	WEIGHT:
SPEC.:6060	DIM.: 595*595*10	SERIAL No.:
MFR.: MGL	SUR.:0.595*0.595	Shielding Angle:

DATA OF LAMP		PHOTOMETRIC DATA Eff: 109.89 lm/W			
MODEIPL-6060-36S(6000K)-UGR		I _{max} (cd)	2183	S/MH(C0/180)	1.17
NOMINAL POWER(W)	36	LOR(%)	100.0	S/MH(C90/270)	1.13
RATED VOLTAGE(V)	220-240	TOTAL FLUX(lm)	4064.9	η UP, DN(C0-180)	0.2,49.9
NOMINAL FLUX(lm)	4064.95	CIE CLASS	DIRECT	η UP, DN(C180-360)	0.2,49.7
LAMPS INSIDE	1	η up(%)	0.5	CIBSE SHR NOM	1.00
TEST VOLTAGE(V)	220.0	η down(%)	99.5	CIBSE SHR MAX	1.15



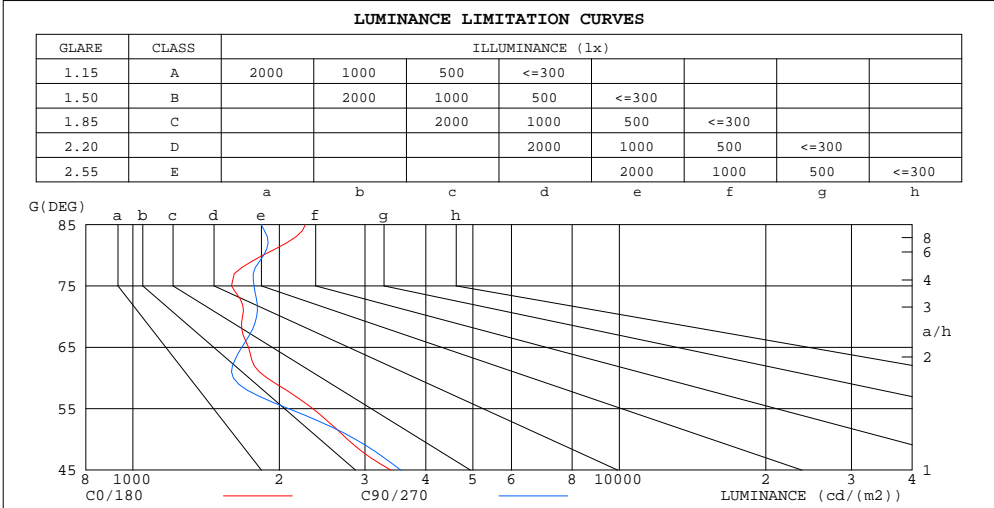
C Range: 0 - 360DEG
 C Interval: 30.0DEG
 Test Speed: HIGH
 Temperature:25DEG
 Operators:PLJ
 Test Date:2019-01-10

γ Range: 0 - 180DEG
 γ Interval: 1.0DEG
 Test System:EVERFINE GO-2000A_V1 SYSTEM V2.0.295
 Humidity:25%
 Test Distance:7.580m [K=1.0000]
 Remarks:

**ZONAL FLUX DIAGRAM
AND LUMINANCE LIMITATION CURVES**

ZONAL FLUX DIAGRAM:

γ	C0	C45	C90	C135	C180	C225	C270	C315	γ	Φ zone	Φ total	#lum,lamp
10	2164	2125	2086	2130	2179	2130	2086	2125	0- 10	203.4	203.4	5,5
20	2095	2007	1909	1999	2097	1999	1909	2007	10- 20	588.5	792.0	19.5,19.5
30	1742	1676	1585	1656	1723	1656	1585	1676	20- 30	849.6	1642	40.4,40.4
40	1170	1140	1147	1103	1111	1103	1147	1140	30- 40	886.7	2528	62.2,62.2
50	621.7	633.6	645.5	607.0	591.1	607.0	645.5	633.6	40- 50	654.8	3183	78.3,78.3
60	330.3	312.0	281.7	300.0	320.3	300.0	281.7	312.0	50- 60	396.5	3579	88.1,88.1
70	201.2	203.9	215.0	199.6	197.8	199.6	215.0	203.9	60- 70	246.9	3826	94.1,94.1
80	112.5	105.2	112.9	101.9	104.8	101.9	112.9	105.2	70- 80	161.3	3988	98.1,98.1
90	1.343	1.974	1.136	0.5998	0.5516	0.5998	1.136	1.974	80- 90	58.30	4046	99.5,99.5
100	0.7539	0.7972	0.8577	0.8226	0.8054	0.8226	0.8577	0.7972	90-100	0.7330	4047	99.5,99.5
110	1.308	1.400	1.496	1.441	1.393	1.441	1.496	1.400	100-110	1.155	4048	99.6,99.6
120	2.245	2.353	2.491	2.397	2.369	2.397	2.491	2.353	110-120	1.856	4050	99.6,99.6
130	3.464	3.569	3.637	3.580	3.621	3.580	3.637	3.569	120-130	2.656	4052	99.7,99.7
140	4.731	4.773	4.851	4.773	4.897	4.773	4.851	4.773	130-140	3.231	4056	99.8,99.8
150	5.864	5.936	6.028	5.966	6.027	5.966	6.028	5.936	140-150	3.364	4059	99.9,99.9
160	7.074	7.165	7.302	7.248	7.245	7.248	7.302	7.165	150-160	3.026	4062	99.9,99.9
170	8.161	8.226	8.270	8.390	8.264	8.390	8.270	8.226	160-170	2.192	4064	100,100
180	8.797	8.712	8.716	8.780	8.853	8.780	8.716	8.712	170-180	0.8109	4065	100,100
DEG	LUMINOUS INTENSITY:cd									UNIT:lm		



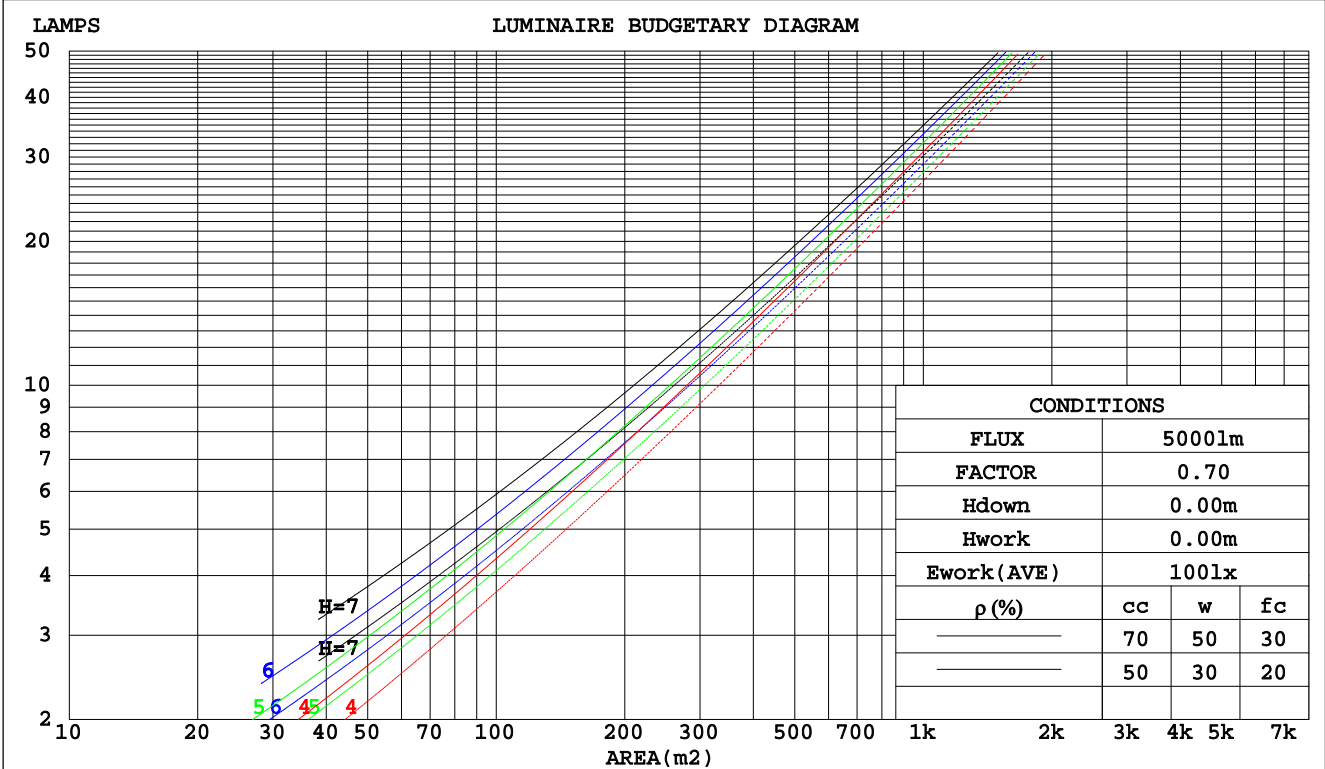
C Range: 0 - 360DEG
 C Interval: 30.0DEG
 Test Speed: HIGH
 Temperature:25DEG
 Operators:PLJ
 Test Date:2019-01-10

γ Range: 0 - 180DEG
 γ Interval: 1.0DEG
 Test System:EVERFINE GO-2000A_V1 SYSTEM V2.0.295
 Humidity:25%
 Test Distance:7.580m [K=1.0000]
 Remarks:

CU AND LUMINAIRE BUDGETARY ESTIMATE DIAGRAM

Test:U:222.1V I:0.1724A P:36.99W PF:0.9659 Lamp Flux:4064.95x1 lm		
NAME:	TYPE:LED	WEIGHT:
SPEC.:6060	DIM.: 595*595*10	SERIAL No.:
MFR.: MGL	SUR.:0.595*0.595	Shielding Angle:

pcc	80%			70%			50%			30%			10%			0
pw	50%	30%	10%	50%	30%	10%	50%	30%	10%	50%	30%	10%	50%	30%	10%	0
pfc	20%			20%			20%			20%			20%			0
RCR	RCR:Room Cavity Ratio															
	Coefficients of Utilization(CU)															
0.0	1.19	1.19	1.19	1.16	1.16	1.16	1.11	1.11	1.11	1.06	1.06	1.06	1.02	1.02	1.02	.00
1.0	1.06	1.03	.99	1.04	1.01	.98	.90	.97	.95	.96	.94	.92	.92	.91	.89	.87
2.0	.95	.89	.85	.93	.88	.84	.90	.85	.82	.87	.83	.80	.84	.81	.78	.76
3.0	.86	.79	.73	.84	.78	.72	.81	.76	.71	.78	.74	.70	.76	.72	.69	.67
4.0	.77	.70	.64	.76	.69	.64	.74	.68	.63	.71	.66	.62	.69	.65	.61	.59
5.0	.70	.63	.57	.69	.62	.56	.67	.61	.56	.65	.60	.55	.64	.59	.55	.53
6.0	.64	.56	.51	.63	.56	.51	.62	.55	.50	.60	.54	.50	.59	.53	.49	.47
7.0	.59	.51	.46	.58	.51	.46	.57	.50	.45	.55	.49	.45	.54	.49	.45	.43
8.0	.55	.47	.42	.54	.47	.41	.53	.46	.41	.51	.45	.41	.50	.45	.41	.39
9.0	.51	.43	.38	.50	.43	.38	.49	.42	.38	.48	.42	.38	.47	.41	.37	.36
10.0	.47	.40	.35	.46	.40	.35	.45	.39	.35	.45	.39	.35	.44	.38	.34	.33



C Range: 0 - 360DEG
 C Interval: 30.0DEG
 Test Speed: HIGH
 Temperature: 25DEG
 Operators: PLJ
 Test Date: 2019-01-10

γ Range: 0 - 180DEG
 γ Interval: 1.0DEG
 Test System: EVERFINE GO-2000A_V1 SYSTEM V2.0.295
 Humidity: 25%
 Test Distance: 7.580m [K=1.0000]
 Remarks:

WEC AND CCEC

Test:U:222.1V I:0.1724A P:36.99W PF:0.9659 Lamp Flux:4064.95x1 lm		
NAME:	TYPE:LED	WEIGHT:
SPEC.:6060	DIM.: 595*595*10	SERIAL No.:
MFR.: MGL	SUR.:0.595*0.595	Shielding Angle:

ρ_{cc}	80%			70%			50%			30%			10%			0
ρ_w	50%	30%	10%	50%	30%	10%	50%	30%	10%	50%	30%	10%	50%	30%	10%	0
ρ_{fc}	20%			20%			20%			20%			20%			0
RCR	RCR:Room Cavity Ratio						Wall Exitance Coefficients(WEC)									
0.0																
1.0	.260	.148	.047	.253	.144	.046	.239	.137	.044	.227	.131	.042	.216	.125	.040	
2.0	.245	.134	.041	.239	.132	.041	.228	.127	.039	.217	.122	.038	.207	.117	.037	
3.0	.229	.122	.037	.224	.120	.036	.214	.116	.035	.205	.112	.034	.196	.108	.034	
4.0	.214	.111	.033	.209	.110	.032	.201	.106	.032	.192	.103	.031	.185	.100	.031	
5.0	.200	.102	.030	.196	.101	.029	.188	.098	.029	.181	.095	.028	.174	.093	.028	
6.0	.188	.094	.027	.184	.093	.027	.177	.091	.026	.171	.089	.026	.164	.087	.026	
7.0	.177	.087	.025	.173	.086	.025	.167	.084	.024	.161	.083	.024	.156	.081	.024	
8.0	.166	.081	.023	.163	.080	.023	.158	.079	.023	.153	.077	.022	.148	.076	.022	
9.0	.157	.076	.021	.155	.075	.021	.150	.074	.021	.145	.073	.021	.140	.071	.021	
10.0	.149	.071	.020	.147	.071	.020	.142	.070	.020	.138	.068	.019	.134	.067	.019	

ρ_{cc}	80%			70%			50%			30%			10%			0
ρ_w	50%	30%	10%	50%	30%	10%	50%	30%	10%	50%	30%	10%	50%	30%	10%	0
ρ_{fc}	20%			20%			20%			20%			20%			0
RCR	RCR:Room Cavity Ratio						Ceiling Cavity Exitance Coefficients(CCEC)									
0.0	.194	.194	.194	.166	.166	.166	.113	.113	.113	.065	.065	.065	.021	.021	.021	
1.0	.180	.160	.142	.154	.137	.122	.106	.095	.084	.061	.055	.049	.019	.018	.016	
2.0	.170	.136	.107	.145	.117	.093	.100	.081	.065	.057	.047	.038	.018	.015	.012	
3.0	.160	.118	.084	.137	.102	.073	.094	.071	.051	.054	.041	.030	.018	.013	.010	
4.0	.152	.104	.067	.130	.090	.058	.090	.063	.041	.052	.037	.024	.017	.012	.008	
5.0	.144	.093	.055	.124	.081	.048	.085	.056	.034	.049	.033	.020	.016	.011	.007	
6.0	.137	.084	.047	.118	.073	.041	.081	.051	.029	.047	.030	.017	.015	.010	.006	
7.0	.131	.077	.040	.112	.067	.035	.078	.047	.025	.045	.028	.015	.015	.009	.005	
8.0	.125	.071	.035	.107	.062	.030	.074	.044	.022	.043	.026	.013	.014	.008	.004	
9.0	.119	.066	.031	.103	.058	.027	.071	.041	.019	.041	.024	.011	.013	.008	.004	
10.0	.114	.062	.028	.098	.054	.024	.068	.038	.017	.040	.022	.010	.013	.007	.003	

C Range: 0 - 360DEG
C Interval: 30.0DEG
Test Speed: HIGH
Temperature:25DEG
Operators:PLJ
Test Date:2019-01-10

γ Range: 0 - 180DEG
 γ Interval: 1.0DEG
Test System:EVERFINE GO-2000A_V1 SYSTEM V2.0.295
Humidity:25%
Test Distance:7.580m [K=1.0000]
Remarks:

UGR(Unified Glare Rating) Table

Test:U:222.1V I:0.1724A P:36.99W PF:0.9659 Lamp Flux:4064.95x1 lm										
NAME:					TYPE:LED			WEIGHT:		
SPEC.:6060					DIM.: 595*595*10			SERIAL No.:		
MFR.: MGL					SUR.:0.595*0.595			Shielding Angle:		
ceiling/cavity	0.7	0.7	0.5	0.5	0.3	0.7	0.7	0.5	0.5	0.3
walls	0.5	0.3	0.5	0.3	0.3	0.5	0.3	0.5	0.3	0.3
working plane	0.2	0.2	0.2	0.2	0.2	0.2	0.2	0.2	0.2	0.2
Room dimensions	Viewed crosswise					Viewed endwise				
x = 2H y = 2H	14.7	16.0	14.9	16.2	16.4	14.8	16.1	15.0	16.3	16.5
3H	15.6	16.8	15.8	17.0	17.2	15.7	16.9	16.0	17.1	17.4
4H	16.0	17.1	16.3	17.4	17.6	16.2	17.4	16.5	17.6	17.9
6H	16.5	17.5	16.8	17.8	18.1	16.7	17.8	17.0	18.0	18.3
8H	16.7	17.8	17.1	18.0	18.3	16.9	17.9	17.2	18.2	18.5
12H	17.0	18.0	17.3	18.3	18.6	17.1	18.0	17.4	18.3	18.6
4H 2H	14.9	16.1	15.2	16.3	16.6	15.0	16.2	15.3	16.4	16.7
3H	16.1	17.1	16.4	17.4	17.7	16.2	17.2	16.6	17.5	17.8
4H	16.7	17.6	17.1	17.9	18.2	16.9	17.8	17.3	18.2	18.5
6H	17.3	18.1	17.7	18.5	18.9	17.6	18.4	18.0	18.7	19.1
8H	17.7	18.4	18.1	18.8	19.2	17.8	18.6	18.3	19.0	19.3
12H	18.0	18.7	18.5	19.1	19.5	18.1	18.7	18.5	19.1	19.5
8H 4H	17.0	17.7	17.4	18.1	18.5	17.2	17.9	17.6	18.3	18.7
6H	17.8	18.4	18.2	18.8	19.2	18.0	18.6	18.4	19.0	19.4
8H	18.3	18.8	18.7	19.2	19.7	18.3	18.9	18.8	19.3	19.8
12H	18.7	19.2	19.2	19.6	20.1	18.7	19.1	19.1	19.6	20.1
12H 4H	17.0	17.7	17.4	18.0	18.5	17.2	17.9	17.6	18.3	18.7
6H	17.9	18.4	18.3	18.8	19.3	18.0	18.6	18.5	19.0	19.5
8H	18.4	18.9	18.9	19.3	19.8	18.5	18.9	18.9	19.4	19.9
Variations with the observer position at spacings:										
S = 1.0H	+ 0.4 / - 0.5					+ 0.4 / - 0.5				
1.5H	+ 0.4 / - 0.4					+ 0.3 / - 0.3				
2.0H	+ 0.9 / - 0.5					+ 0.9 / - 0.8				

CIE Pub.117 Corrected 4065 lm Total Lamp Luminous Flux.(8log(F/F0) = 4.9)

C Range: 0 - 360DEG
C Interval: 30.0DEG
Test Speed: HIGH
Temperature:25DEG
Operators:PLJ
Test Date:2019-01-10

γ Range: 0 - 180DEG
 γ Interval: 1.0DEG
Test System:EVERFINE GO-2000A_V1 SYSTEM V2.0.295
Humidity:25%
Test Distance:7.580m [K=1.0000]
Remarks:

UTILIZATION FACTORS TABLE

Test:U:222.1V I:0.1724A P:36.99W PF:0.9659 Lamp Flux:4064.95x1 lm		
NAME:	TYPE:LED	WEIGHT:
SPEC.:6060	DIM.: 595*595*10	SERIAL No.:
MFR.: MGL	SUR.:0.595*0.595	Shielding Angle:

REFLECTANCE										
Ceiling	0.8	0.8	0.8	0.7	0.7	0.7	0.5	0.5	0.5	0
Walls	0.7	0.5	0.3	0.7	0.5	0.3	0.7	0.5	0.3	0
Working plane	0.2	0.2	0.2	0.2	0.2	0.2	0.2	0.2	0.2	0
ROOM INDEX	UTILIZATION FACTORS(PERCENT) $k(RI) \times RCR = 5$									
k = 0.60	68	58	53	67	58	52	66	58	52	47
0.80	77	68	62	77	68	62	75	67	61	56
1.00	85	76	70	84	75	70	82	76	69	63
1.25	91	82	77	89	82	76	87	80	75	69
1.50	95	87	82	93	86	81	91	85	80	74
2.00	100	93	88	99	92	87	95	90	86	79
2.50	103	97	92	101	96	91	98	93	89	82
3.00	106	100	96	104	99	95	100	96	92	85
4.00	109	104	101	107	103	99	103	99	96	88
5.00	111	107	104	108	105	102	104	101	99	90
ROOM INDEX	UF(total)									Direct
According to DIN EN 13032-2 2004			Suspended				SHRNOM = 1.25			

C Range: 0 - 360DEG
C Interval: 30.0DEG
Test Speed: HIGH
Temperature:25DEG
Operators:PLJ
Test Date:2019-01-10

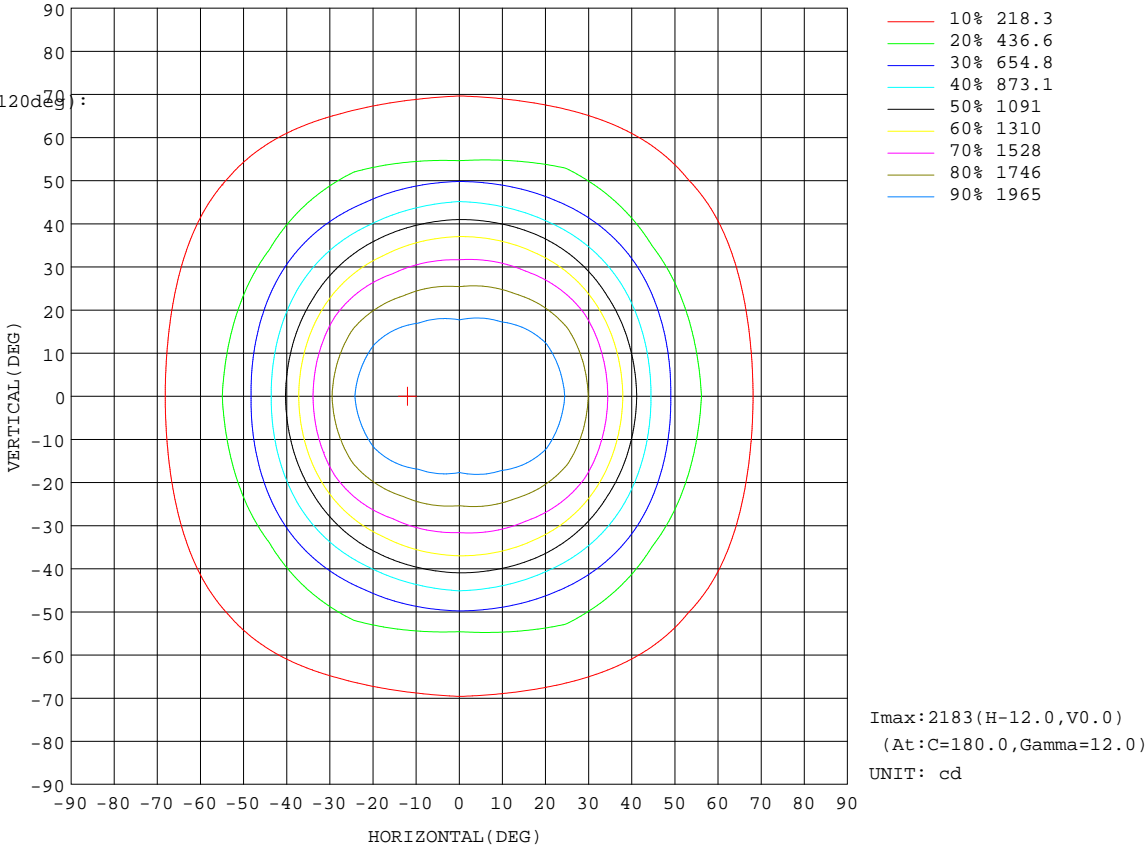
γ Range: 0 - 180DEG
 γ Interval: 1.0DEG
Test System:EVERFINE GO-2000A_V1 SYSTEM V2.0.295
Humidity:25%
Test Distance:7.580m [K=1.0000]
Remarks:

ISOCANDELA DIAGRAM

Test:U:222.1V I:0.1724A P:36.99W PF:0.9659 Lamp Flux:4064.95x1 lm		
NAME:	TYPE:LED	WEIGHT:
SPEC.:6060	DIM.: 595*595*10	SERIAL No.:
MFR.: MGL	SUR.:0.595*0.595	Shielding Angle:

Conical surface Flux(90deg):
 2890 lm
 %lum = 71.1%
 %lamp = 71.1%

Conical surface Flux(120deg):
 3579.5 lm
 %lum = 88.1%
 %lamp = 88.1%



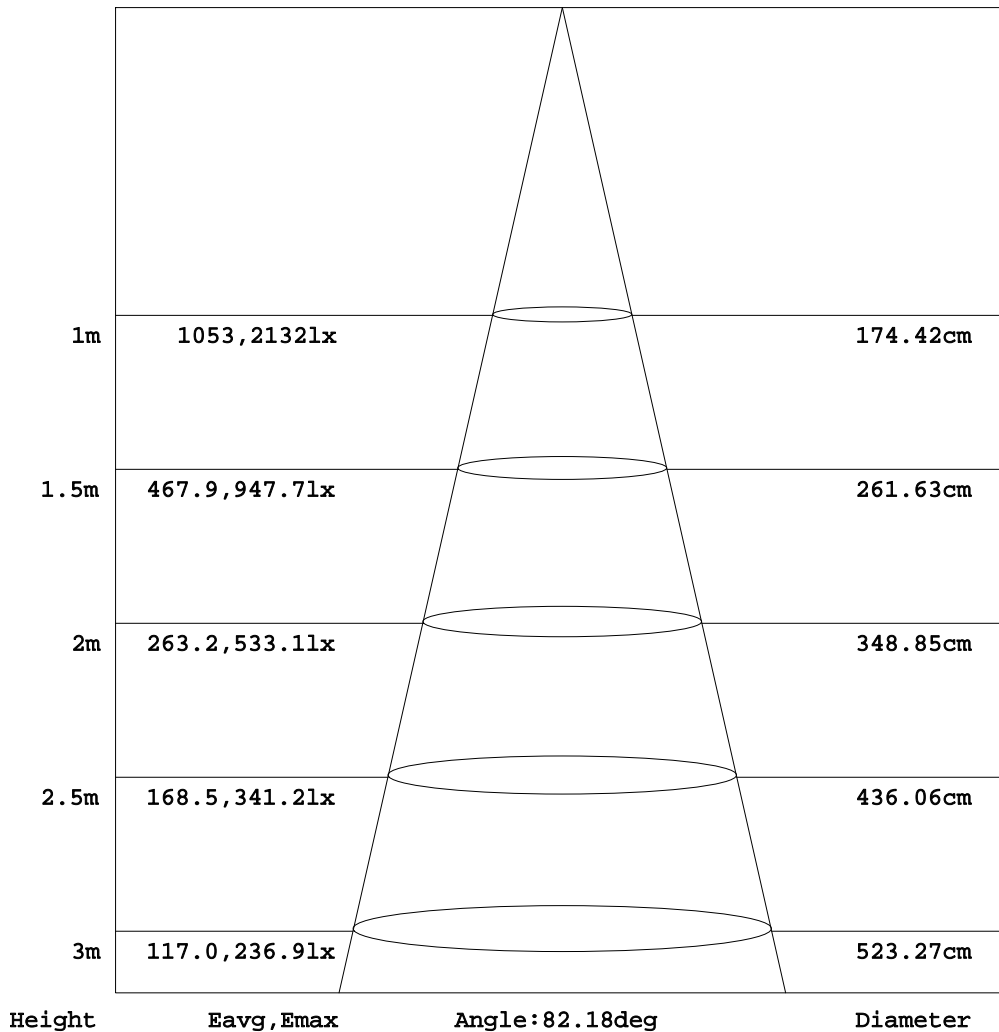
C Range: 0 - 360DEG
 C Interval: 30.0DEG
 Test Speed: HIGH
 Temperature:25DEG
 Operators:PLJ
 Test Date:2019-01-10

γ Range: 0 - 180DEG
 γ Interval: 1.0DEG
 Test System:EVERFINE GO-2000A_V1 SYSTEM V2.0.295
 Humidity:25%
 Test Distance:7.580m [K=1.0000]
 Remarks:

AAI Figure

Test:U:222.1V I:0.1724A P:36.99W PF:0.9659 Lamp Flux:4064.95x1 lm		
NAME:	TYPE:LED	WEIGHT:
SPEC.:6060	DIM.: 595*595*10	SERIAL No.:
MFR.: MGL	SUR.:0.595*0.595	Shielding Angle:

Flux out:2682 lm



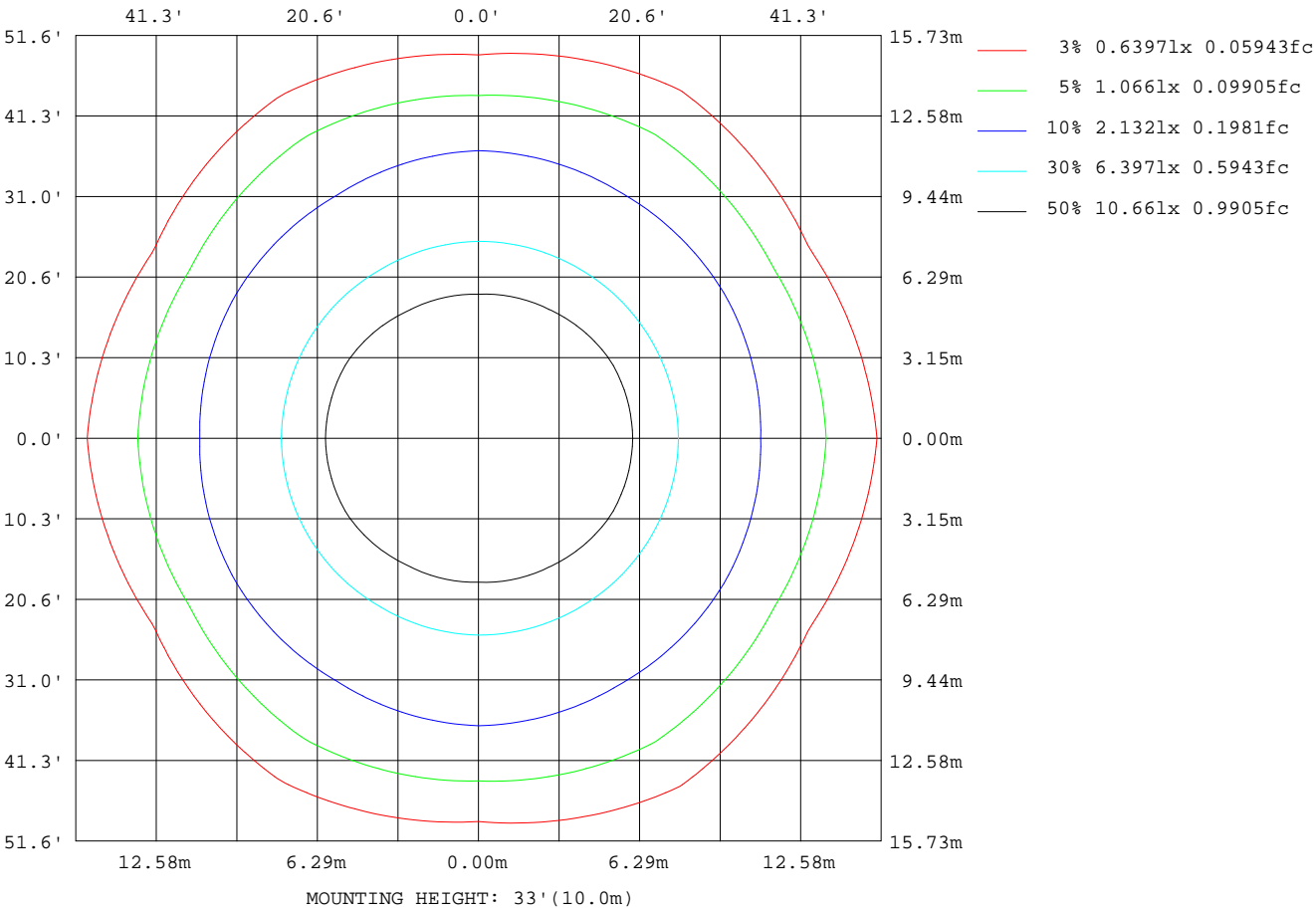
Note: The Curves indicate the illuminated area and the average illumination when the luminaire is at different distance.

C Range: 0 - 360DEG
 C Interval: 30.0DEG
 Test Speed: HIGH
 Temperature: 25DEG
 Operators: PLJ
 Test Date: 2019-01-10

γ Range: 0 - 180DEG
 γ Interval: 1.0DEG
 Test System: EVERFINE GO-2000A_V1 SYSTEM V2.0.295
 Humidity: 25%
 Test Distance: 7.580m [K=1.0000]
 Remarks:

ISOLUX DIAGRAM

Test:U:222.1V I:0.1724A P:36.99W PF:0.9659 Lamp Flux:4064.95x1 lm		
NAME:	TYPE:LED	WEIGHT:
SPEC.:6060	DIM.: 595*595*10	SERIAL No.:
MFR.: MGL	SUR.:0.595*0.595	Shielding Angle:



C Range: 0 - 360DEG
 C Interval: 30.0DEG
 Test Speed: HIGH
 Temperature:25DEG
 Operators:PLJ
 Test Date:2019-01-10

γ Range: 0 - 180DEG
 γ Interval: 1.0DEG
 Test System:EVERFINE GO-2000A_V1 SYSTEM V2.0.295
 Humidity:25%
 Test Distance:7.580m [K=1.0000]
 Remarks:

LED Avg.L Report

Test:U:222.1V I:0.1724A P:36.99W PF:0.9659 Lamp Flux:4064.95x1 lm		
NAME:	TYPE:LED	WEIGHT:
SPEC.:6060	DIM.: 595*595*10	SERIAL No.:
MFR.: MGL	SUR.:0.595*0.595	Shielding Angle:

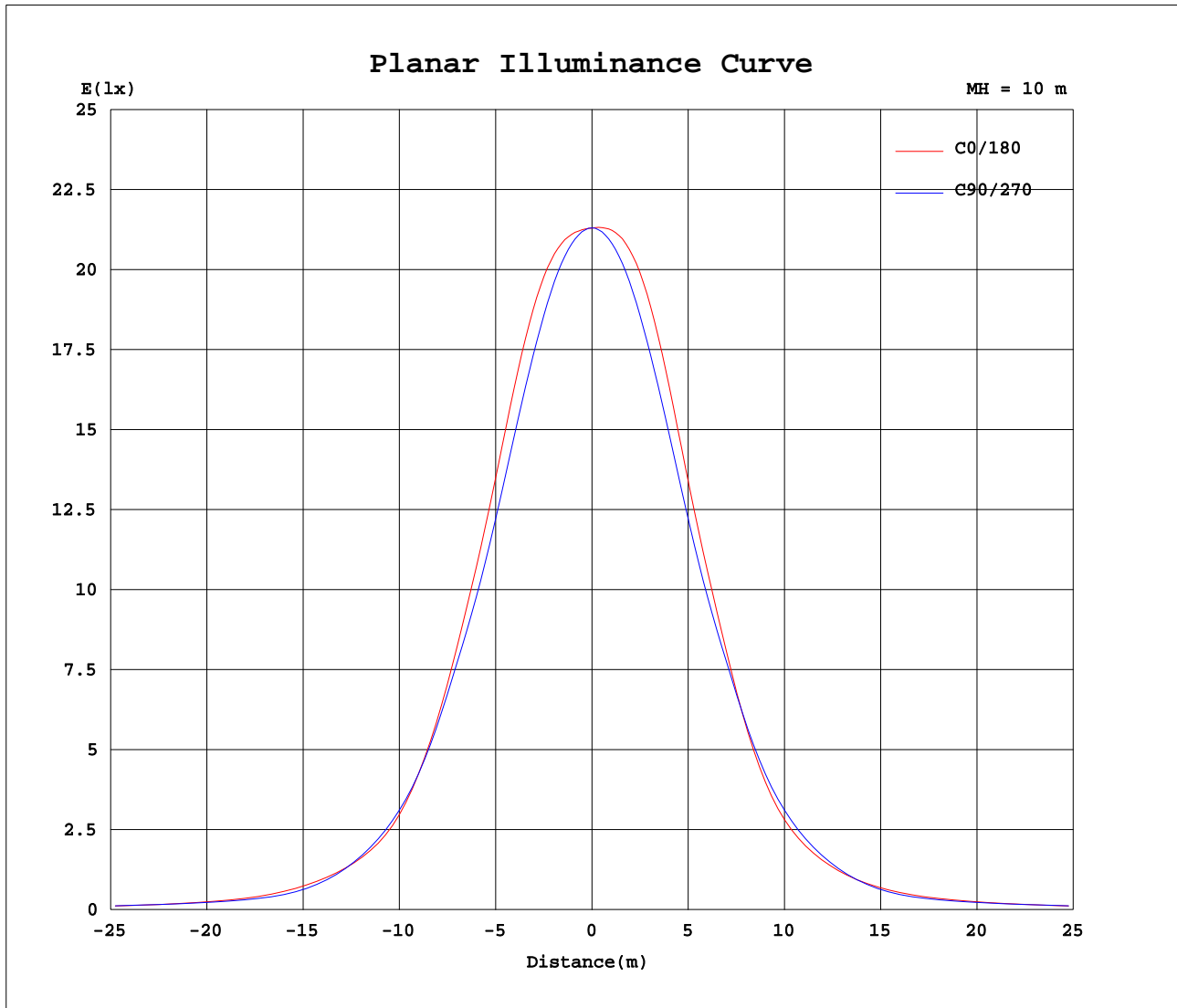
AvgL	cd/m2
L_0~180(65)av	1736
L_0~180(75)av	1568
L_0~180(85)av	2124
L_90~270(65)av	1675
L_90~270(75)av	1775
L_90~270(85)av	1834
L_45(65)av	1649
L_45(75)av	1662
L_45(85)av	1684

Standard: GB/T 29293-2012

C Range: 0 - 360DEG
C Interval: 30.0DEG
Test Speed: HIGH
Temperature:25DEG
Operators:PLJ
Test Date:2019-01-10

γ Range: 0 - 180DEG
 γ Interval: 1.0DEG
Test System:EVERFINE GO-2000A_V1 SYSTEM V2.0.295
Humidity:25%
Test Distance:7.580m [K=1.0000]
Remarks:

Planar Illuminance Curve



C Range: 0 - 360DEG
 C Interval: 30.0DEG
 Test Speed: HIGH
 Temperature: 25DEG
 Operators: PLJ
 Test Date: 2019-01-10

γ Range: 0 - 180DEG
 γ Interval: 1.0DEG
 Test System: EVERFINE GO-2000A_V1 SYSTEM V2.0.295
 Humidity: 25%
 Test Distance: 7.580m [K=1.0000]
 Remarks:

LUMINOUS DISTRIBUTION INTENSITY DATA

Test:U:222.1V I:0.1724A P:36.99W PF:0.9659 Lamp Flux:4064.95x1 lm		
NAME:	TYPE:LED	WEIGHT:
SPEC.:6060	DIM.: 595*595*10	SERIAL No.:
MFR.: MGL	SUR.:0.595*0.595	Shielding Angle:

Table--1

UNIT: cd

C(DEG) γ (DEG)	0	30	60	90	120	150	180	210	240	270	300	330						
0	2130	2131	2131	2130	2131	2130	2130	2130	2131	2130	2131	2131						
5	2141	2134	2124	2120	2128	2142	2151	2142	2128	2120	2124	2134						
10	2164	2145	2105	2086	2106	2153	2179	2153	2106	2086	2105	2145						
15	2161	2130	2054	2017	2050	2132	2173	2132	2050	2017	2054	2130						
20	2095	2057	1958	1909	1949	2049	2097	2049	1949	1909	1958	2057						
25	1945	1913	1812	1759	1797	1895	1935	1895	1797	1759	1812	1913						
30	1742	1722	1630	1585	1610	1702	1723	1702	1610	1585	1630	1722						
35	1495	1489	1417	1404	1391	1455	1461	1455	1391	1404	1417	1489						
40	1170	1133	1147	1147	1115	1091	1111	1091	1115	1147	1147	1133						
45	840	853	848	880	819	825	796	825	819	880	848	853						
50	622	630	638	645	621	593	591	593	621	645	638	630						
55	471	409	489	420	465	376	435	376	465	420	489	409						
60	330	280	345	282	320	280	320	280	320	282	345	280						
65	256	237	255	248	251	237	258	237	251	248	255	237						
70	201	200	208	215	203	196	198	196	203	215	208	200						
75	144	150	163	161	156	134	140	134	156	161	163	150						
80	113	109	102	113	98.6	105	105	105	98.6	113	102	109						
85	69.0	57.4	53.3	56.0	48.6	50.2	60.6	50.2	48.6	56.0	53.3	57.4						
90	1.34	2.46	1.48	1.14	0.63	0.57	0.55	0.57	0.63	1.14	1.48	2.46						
95	0.58	0.61	0.61	0.63	0.63	0.66	0.61	0.66	0.63	0.63	0.61	0.61						
100	0.75	0.78	0.81	0.86	0.83	0.81	0.81	0.81	0.83	0.86	0.81	0.78						
105	1.00	1.04	1.09	1.14	1.12	1.08	1.06	1.08	1.12	1.14	1.09	1.04						
110	1.31	1.36	1.44	1.50	1.46	1.42	1.39	1.42	1.46	1.50	1.44	1.36						
115	1.72	1.79	1.89	1.97	1.88	1.87	1.84	1.87	1.88	1.97	1.89	1.79						
120	2.24	2.31	2.40	2.49	2.40	2.40	2.37	2.40	2.40	2.49	2.40	2.31						
125	2.83	2.92	2.97	3.05	2.97	2.98	2.98	2.98	2.97	3.05	2.97	2.92						
130	3.46	3.55	3.59	3.64	3.58	3.59	3.62	3.59	3.58	3.64	3.59	3.55						
135	4.10	4.16	4.19	4.25	4.17	4.19	4.28	4.19	4.17	4.25	4.19	4.16						
140	4.73	4.76	4.79	4.85	4.77	4.77	4.90	4.77	4.77	4.85	4.79	4.76						
145	5.31	5.33	5.38	5.44	5.37	5.36	5.48	5.36	5.37	5.44	5.38	5.33						
150	5.86	5.89	5.98	6.03	5.99	5.94	6.03	5.94	5.99	6.03	5.98	5.89						
155	6.43	6.48	6.59	6.64	6.62	6.59	6.60	6.59	6.62	6.64	6.59	6.48						
160	7.07	7.12	7.21	7.30	7.27	7.23	7.24	7.23	7.27	7.30	7.21	7.12						
165	7.68	7.72	7.78	7.86	7.89	7.85	7.81	7.85	7.89	7.86	7.78	7.72						
170	8.16	8.16	8.29	8.27	8.37	8.41	8.26	8.41	8.37	8.27	8.29	8.16						
175	8.57	8.51	8.58	8.57	8.63	8.70	8.64	8.70	8.63	8.57	8.58	8.51						
180	8.80	8.72	8.71	8.72	8.80	8.76	8.85	8.76	8.80	8.72	8.71	8.72						

C Range: 0 - 360DEG
 C Interval: 30.0DEG
 Test Speed: HIGH
 Temperature:25DEG
 Operators:PLJ
 Test Date:2019-01-10

γ Range: 0 - 180DEG
 γ Interval: 1.0DEG
 Test System:EVERFINE GO-2000A_V1 SYSTEM V2.0.295
 Humidity:25%
 Test Distance:7.580m [K=1.0000]
 Remarks: