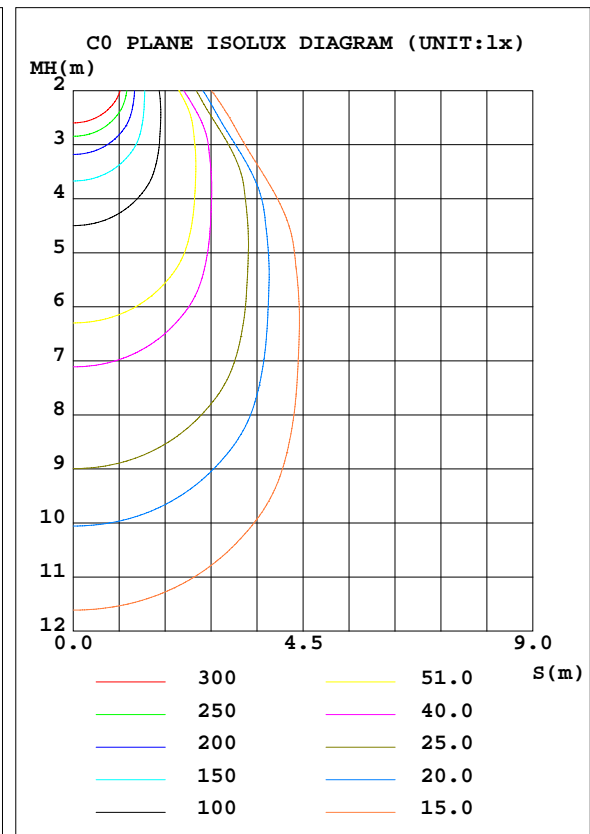
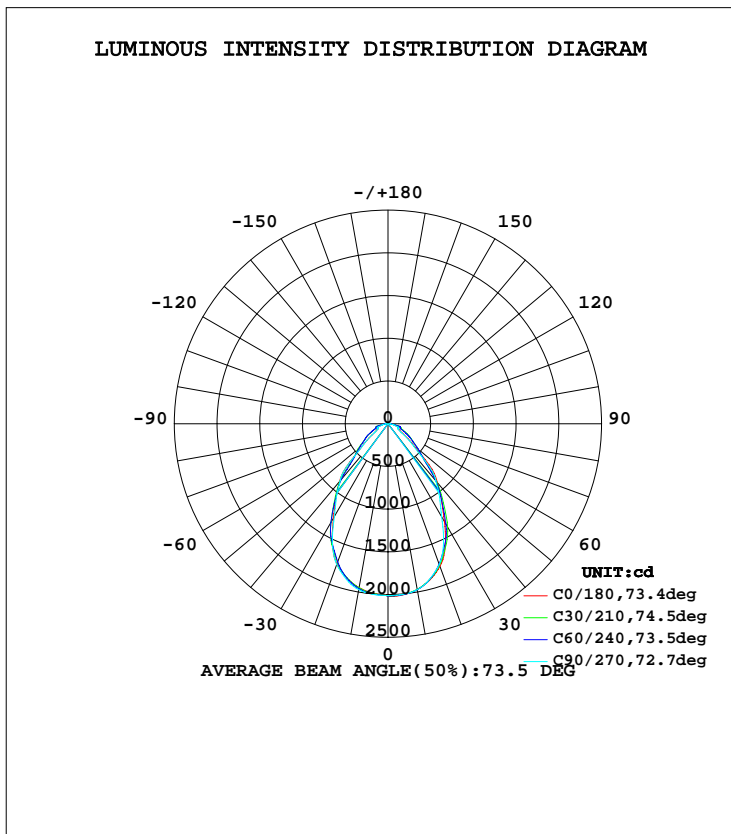


LUMINAIRE PHOTOMETRIC TEST REPORT

NAME:	TYPE:LED	WEIGHT:
SPEC.:6262M	DIM.: 620*620	SERIAL No.:
MFR.: JT	SUR.:0.620*0.620	Shielding Angle:

DATA OF LAMP		PHOTOMETRIC DATA				Eff: 92.06 lm/W
MODEL	47134401	I <sub>max</sub> (cd)	2022	S/MH(C0/180)	1.03	
NOMINAL POWER(W)	36	LOR(%)	100.0	S/MH(C90/270)	1.02	
RATED VOLTAGE(V)	220-240	TOTAL FLUX(lm)	3223.6	η UP, DN(C0-180)	0.1,50.0	
NOMINAL FLUX(lm)	3223.62	CIE CLASS	DIRECT	η UP, DN(C180-360)	0.1,49.8	
LAMPS INSIDE	1	η up(%)	0.2	CIBSE SHR NOM	1.00	
TEST VOLTAGE(V)	220	η down(%)	99.8	CIBSE SHR MAX	1.15	



C Range: 0 - 360DEG  
 C Interval: 30.0DEG  
 Test Speed: HIGH  
 Temperature:25.3DEG  
 Operators:LXF  
 Test Date:2021-04-07

γ Range: 0 - 180DEG  
 γ Interval: 1.0DEG  
 Test System:EVERFINE GO-2000A\_V1 SYSTEM V2.0.295  
 Humidity:25.0%  
 Test Distance:7.560m [K=0.9735]  
 Remarks:

ZONAL FLUX DIAGRAM

ZONAL FLUX DIAGRAM:

γ	C0	C45	C90	C135	C180	C225	C270	C315	γ	Φ zone	Φ total	lum, lamp
10	1970	1971	1973	1956	1948	1956	1973	1971	0- 10	190.0	190.0	5.89,5.89
20	1777	1756	1754	1724	1749	1724	1754	1756	10- 20	527.2	717.1	22.2,22.2
30	1323	1377	1257	1336	1278	1336	1257	1377	20- 30	713.6	1431	44.4,44.4
40	898.4	880.9	872.5	860.5	880.6	860.5	872.5	880.9	30- 40	681.0	2112	65.5,65.5
50	393.5	458.4	365.9	447.6	369.4	447.6	365.9	458.4	40- 50	476.4	2588	80.3,80.3
60	156.8	277.5	151.1	276.4	155.2	276.4	151.1	277.5	50- 60	282.3	2870	89,89
70	132.9	158.5	132.2	150.4	134.3	150.4	132.2	158.5	60- 70	181.2	3052	94.7,94.7
80	68.29	83.90	57.00	76.84	61.92	76.84	57.00	83.90	70- 80	129.0	3181	98.7,98.7
90	0.8488	0.7049	0.1395	0.1982	0.1752	0.1982	0.1395	0.7049	80- 90	37.47	3218	99.8,99.8
100	0.1776	0.2368	0.2032	0.2370	0.1692	0.2370	0.2032	0.2368	90-100	0.2161	3218	99.8,99.8
110	0.3215	0.3810	0.3520	0.3723	0.3173	0.3723	0.3520	0.3810	100-110	0.2983	3219	99.8,99.8
120	0.6046	0.6279	0.6317	0.6161	0.5881	0.6161	0.6317	0.6279	110-120	0.4738	3219	99.9,99.9
130	0.9724	1.003	0.9904	0.9794	0.9478	0.9794	0.9904	1.003	120-130	0.7118	3220	99.9,99.9
140	1.370	1.405	1.380	1.371	1.345	1.371	1.380	1.405	130-140	0.9091	3221	99.9,99.9
150	1.793	1.809	1.803	1.762	1.760	1.762	1.803	1.809	140-150	0.9856	3222	99.9,99.9
160	2.268	2.260	2.273	2.228	2.229	2.228	2.273	2.260	150-160	0.9274	3223	100,100
170	2.632	2.628	2.632	2.607	2.611	2.607	2.632	2.628	160-170	0.6876	3223	100,100
180	2.840	2.814	2.793	2.797	2.818	2.797	2.793	2.814	170-180	0.2581	3224	100,100
DEG	LUMINOUS INTENSITY:cd									UNIT:lm		

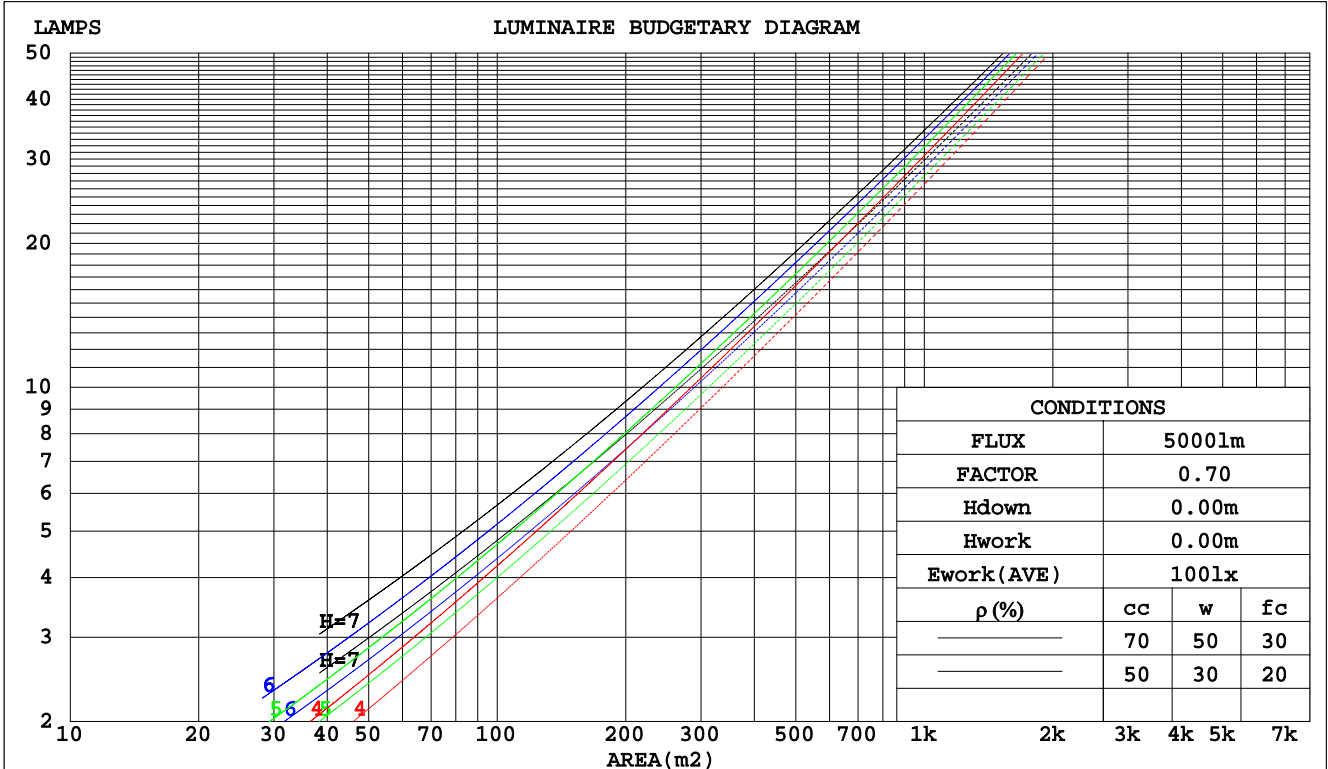
C Range: 0 - 360DEG  
 C Interval: 30.0DEG  
 Test Speed: HIGH  
 Temperature:25.3DEG  
 Operators:LXF  
 Test Date:2021-04-07

γ Range: 0 - 180DEG  
 γ Interval: 1.0DEG  
 Test System:EVERFINE GO-2000A\_V1 SYSTEM V2.0.295  
 Humidity:25.0%  
 Test Distance:7.560m [K=0.9735]  
 Remarks:

CU AND LUMINAIRE BUDGETARY ESTIMATE DIAGRAM

NAME:	TYPE:LED	WEIGHT:
SPEC.:6262M	DIM.: 620*620	SERIAL No.:
MFR.: JT	SUR.:0.620*0.620	Shielding Angle:

pcc	80%			70%			50%			30%			10%			0
	50%	30%	10%	50%	30%	10%	50%	30%	10%	50%	30%	10%	50%	30%	10%	0
pw																
pfc																
RCR	RCR:Room Cavity Ratio															
	Coefficients of Utilization(CU)															
0.0	1.19	1.19	1.19	1.16	1.16	1.16	1.11	1.11	1.11	1.06	1.06	1.06	1.02	1.02	1.02	.00
1.0	1.07	1.03	1.00	1.05	1.01	.99	1.00	.98	.95	.97	.94	.93	.93	.91	.90	.88
2.0	.96	.90	.86	.94	.89	.85	.91	.86	.83	.88	.84	.81	.85	.82	.79	.77
3.0	.87	.80	.75	.85	.79	.74	.82	.77	.73	.80	.75	.71	.77	.73	.70	.68
4.0	.79	.71	.66	.78	.71	.65	.75	.69	.64	.73	.68	.64	.71	.66	.63	.61
5.0	.72	.64	.59	.71	.64	.58	.69	.63	.58	.67	.62	.57	.65	.60	.57	.55
6.0	.66	.58	.53	.65	.58	.53	.63	.57	.52	.62	.56	.52	.60	.55	.51	.50
7.0	.61	.53	.48	.60	.53	.48	.59	.52	.47	.57	.52	.47	.56	.51	.47	.45
8.0	.56	.49	.44	.56	.49	.44	.54	.48	.43	.53	.47	.43	.52	.47	.43	.41
9.0	.52	.45	.40	.52	.45	.40	.51	.44	.40	.50	.44	.40	.49	.43	.40	.38
10.0	.49	.42	.37	.48	.42	.37	.47	.41	.37	.47	.41	.37	.46	.40	.37	.35



C Range: 0 - 360DEG  
 C Interval: 30.0DEG  
 Test Speed: HIGH  
 Temperature:25.3DEG  
 Operators:LXF  
 Test Date:2021-04-07

γ Range: 0 - 180DEG  
 γ Interval: 1.0DEG  
 Test System:EVERFINE GO-2000A\_V1 SYSTEM V2.0.295  
 Humidity:25.0%  
 Test Distance:7.560m [K=0.9735]  
 Remarks:

WEC AND CCEC

NAME:	TYPE:LED	WEIGHT:
SPEC.:6262M	DIM.: 620*620	SERIAL No.:
MFR.: JT	SUR.:0.620*0.620	Shielding Angle:

ρcc	80%			70%			50%			30%			10%			0
ρw	50%	30%	10%	50%	30%	10%	50%	30%	10%	50%	30%	10%	50%	30%	10%	0
ρfc	20%			20%			20%			20%			20%			0
RCR	RCR:Room Cavity Ratio						Wall Exitance Coefficients(WEC)									
0.0																
1.0	.251	.143	.045	.245	.139	.044	.231	.133	.042	.219	.127	.041	.208	.121	.039	
2.0	.238	.130	.040	.232	.128	.039	.221	.123	.038	.210	.118	.037	.200	.113	.036	
3.0	.222	.118	.035	.217	.116	.035	.207	.112	.034	.198	.109	.033	.190	.105	.033	
4.0	.208	.108	.032	.203	.106	.031	.195	.103	.031	.187	.100	.030	.179	.097	.030	
5.0	.195	.099	.029	.191	.098	.028	.183	.095	.028	.176	.093	.028	.169	.090	.027	
6.0	.183	.092	.026	.179	.090	.026	.172	.088	.026	.166	.086	.025	.160	.084	.025	
7.0	.172	.085	.024	.169	.084	.024	.163	.082	.024	.157	.080	.023	.152	.079	.023	
8.0	.162	.079	.022	.159	.078	.022	.154	.077	.022	.149	.075	.022	.144	.074	.022	
9.0	.153	.074	.021	.151	.073	.021	.146	.072	.020	.141	.071	.020	.137	.070	.020	
10.0	.145	.070	.019	.143	.069	.019	.139	.068	.019	.134	.067	.019	.131	.066	.019	

ρcc	80%			70%			50%			30%			10%			0
ρw	50%	30%	10%	50%	30%	10%	50%	30%	10%	50%	30%	10%	50%	30%	10%	0
ρfc	20%			20%			20%			20%			20%			0
RCR	RCR:Room Cavity Ratio						Ceiling Cavity Exitance Coefficients(CCEC)									
0.0	.192	.192	.192	.164	.164	.164	.112	.112	.112	.064	.064	.064	.021	.021	.021	
1.0	.178	.158	.140	.152	.136	.121	.104	.093	.083	.060	.054	.049	.019	.017	.016	
2.0	.166	.133	.106	.142	.115	.092	.098	.079	.064	.056	.046	.037	.018	.015	.012	
3.0	.157	.115	.082	.134	.099	.071	.092	.069	.050	.053	.040	.030	.017	.013	.010	
4.0	.148	.101	.066	.127	.088	.057	.087	.061	.040	.051	.036	.024	.016	.012	.008	
5.0	.140	.090	.054	.120	.078	.047	.083	.055	.033	.048	.032	.020	.015	.010	.006	
6.0	.133	.082	.045	.114	.071	.039	.079	.050	.028	.046	.029	.016	.015	.010	.005	
7.0	.127	.075	.038	.109	.065	.033	.075	.045	.024	.044	.027	.014	.014	.009	.005	
8.0	.121	.069	.033	.104	.060	.029	.072	.042	.020	.042	.025	.012	.014	.008	.004	
9.0	.115	.064	.029	.099	.055	.025	.069	.039	.018	.040	.023	.011	.013	.008	.004	
10.0	.110	.059	.026	.095	.052	.022	.066	.036	.016	.038	.021	.010	.012	.007	.003	

C Range: 0 - 360DEG  
 C Interval: 30.0DEG  
 Test Speed: HIGH  
 Temperature:25.3DEG  
 Operators:LXF  
 Test Date:2021-04-07

γ Range: 0 - 180DEG  
 γ Interval: 1.0DEG  
 Test System:EVERFINE GO-2000A\_V1 SYSTEM V2.0.295  
 Humidity:25.0%  
 Test Distance:7.560m [K=0.9735]  
 Remarks:

UGR(Unified Glare Rating) Table

NAME:		TYPE:LED					WEIGHT:				
SPEC.:6262M		DIM.: 620*620					SERIAL No.:				
MFR.: JT		SUR.:0.620*0.620					Shielding Angle:				
ceiling/cavity	0.7	0.7	0.5	0.5	0.3	0.7	0.7	0.5	0.5	0.3	
walls	0.5	0.3	0.5	0.3	0.3	0.5	0.3	0.5	0.3	0.3	
working plane	0.2	0.2	0.2	0.2	0.2	0.2	0.2	0.2	0.2	0.2	
Room dimensions	Viewed crosswise					Viewed endwise					
x = 2H y = 2H	12.2	13.5	12.5	13.7	13.9	12.0	13.3	12.3	13.5	13.7	
3H	13.0	14.2	13.3	14.4	14.6	12.8	14.0	13.1	14.2	14.4	
4H	13.5	14.6	13.8	14.9	15.1	13.3	14.4	13.6	14.6	14.9	
6H	13.9	15.0	14.2	15.2	15.5	13.6	14.7	14.0	14.9	15.2	
8H	14.1	15.1	14.4	15.3	15.6	13.7	14.7	14.1	15.0	15.3	
12H	14.2	15.1	14.5	15.4	15.7	13.8	14.8	14.1	15.1	15.4	
4H 2H	12.7	13.8	13.0	14.0	14.3	12.5	13.6	12.8	13.8	14.1	
3H	13.8	14.8	14.1	15.0	15.3	13.6	14.5	13.9	14.8	15.1	
4H	14.5	15.4	14.9	15.7	16.1	14.3	15.2	14.7	15.5	15.9	
6H	15.1	15.9	15.5	16.3	16.6	14.9	15.7	15.3	16.0	16.4	
8H	15.3	16.0	15.7	16.4	16.8	15.0	15.7	15.4	16.1	16.5	
12H	15.5	16.1	15.9	16.5	16.9	15.1	15.8	15.5	16.2	16.6	
8H 4H	15.0	15.7	15.4	16.1	16.5	14.8	15.6	15.2	15.9	16.3	
6H	15.7	16.3	16.2	16.7	17.2	15.5	16.1	16.0	16.5	17.0	
8H	16.0	16.5	16.4	16.9	17.4	15.7	16.3	16.2	16.7	17.1	
12H	16.2	16.7	16.7	17.1	17.6	15.9	16.4	16.4	16.8	17.3	
12H 4H	15.0	15.7	15.4	16.1	16.5	14.9	15.5	15.3	15.9	16.3	
6H	15.8	16.3	16.3	16.8	17.2	15.6	16.1	16.0	16.5	17.0	
8H	16.1	16.5	16.6	17.0	17.5	15.8	16.3	16.3	16.7	17.2	
Variations with the observer position at spacings:											
S = 1.0H	+ 0.4 / - 0.5					+ 0.4 / - 0.5					
1.5H	+ 0.4 / - 0.5					+ 0.4 / - 0.6					
2.0H	+ 0.9 / - 1.2					+ 0.8 / - 1.1					

CIE Pub.117 Corrected 3224 lm Total Lamp Luminous Flux.(8log(F/F0) = 4.1)

C Range: 0 - 360DEG  
 C Interval: 30.0DEG  
 Test Speed: HIGH  
 Temperature:25.3DEG  
 Operators:LXF  
 Test Date:2021-04-07

γ Range: 0 - 180DEG  
 γ Interval: 1.0DEG  
 Test System:EVERFINE GO-2000A\_V1 SYSTEM V2.0.295  
 Humidity:25.0%  
 Test Distance:7.560m [K=0.9735]  
 Remarks:

UTILIZATION FACTORS TABLE

NAME:	TYPE:LED	WEIGHT:
SPEC.:6262M	DIM.: 620*620	SERIAL No.:
MFR.: JT	SUR.:0.620*0.620	Shielding Angle:

REFLECTANCE										
Ceiling	0.8	0.8	0.8	0.7	0.7	0.7	0.5	0.5	0.5	0
Walls	0.7	0.5	0.3	0.7	0.5	0.3	0.7	0.5	0.3	0
Working plane	0.2	0.2	0.2	0.2	0.2	0.2	0.2	0.2	0.2	0
ROOM INDEX	UTILIZATION FACTORS(PERCENT) k(RI) x RCR = 5									
k = 0.60	70	61	55	70	61	55	69	60	55	50
0.80	79	70	64	78	70	64	77	69	64	58
1.00	86	78	72	85	77	72	83	78	71	65
1.25	92	84	79	91	83	78	88	82	77	71
1.50	96	89	83	95	88	83	92	86	82	75
2.00	101	95	90	99	93	89	96	91	87	81
2.50	104	98	93	102	97	92	99	94	90	83
3.00	106	101	97	104	100	96	101	97	94	86
4.00	109	105	101	107	103	100	103	100	97	89
5.00	111	108	104	109	106	103	105	102	100	91
ROOM INDEX	UF(total)									Direct
According to DIN EN 13032-2 2004			Suspended				SHRNOM = 1.25			

C Range: 0 - 360DEG  
 C Interval: 30.0DEG  
 Test Speed: HIGH  
 Temperature:25.3DEG  
 Operators:LXF  
 Test Date:2021-04-07

γ Range: 0 - 180DEG  
 γ Interval: 1.0DEG  
 Test System:EVERFINE GO-2000A\_V1 SYSTEM V2.0.295  
 Humidity:25.0%  
 Test Distance:7.560m [K=0.9735]  
 Remarks:

ISOCANDELA DIAGRAM

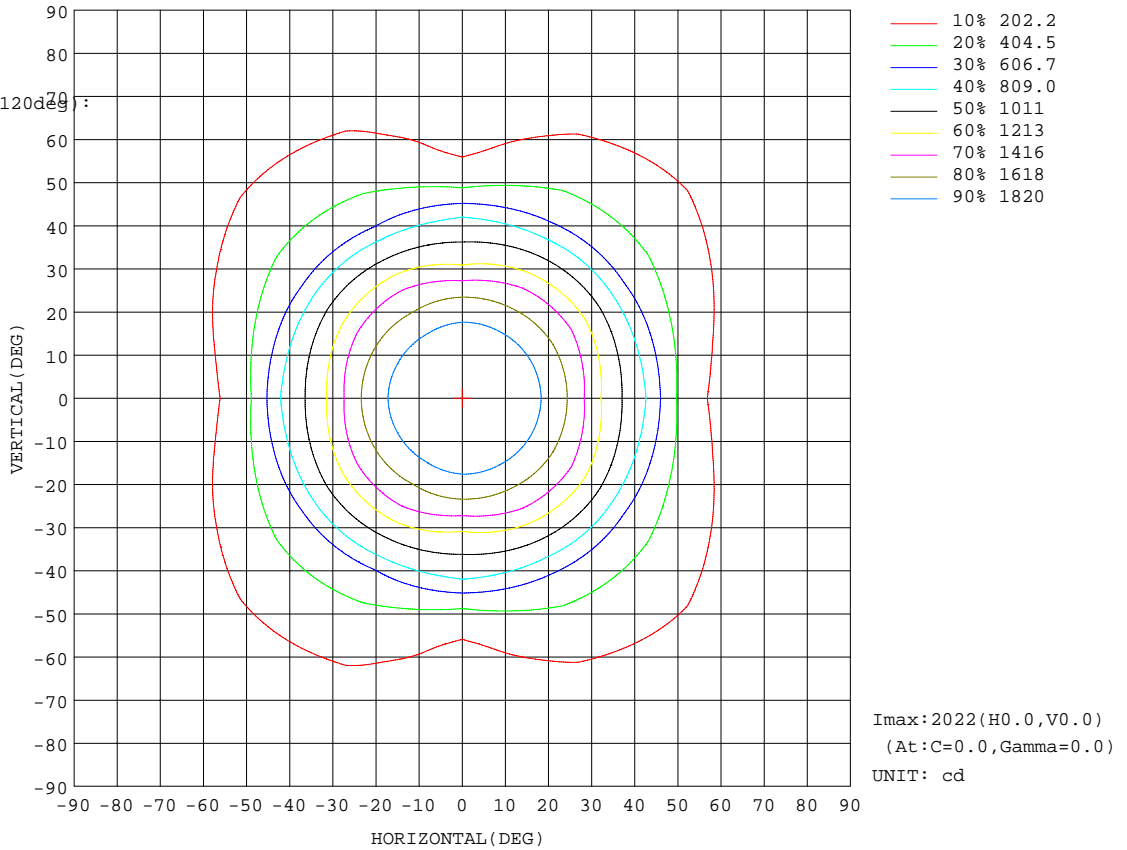
NAME:	TYPE:LED	WEIGHT:
SPEC.:6262M	DIM.: 620*620	SERIAL No.:
MFR.: JT	SUR.:0.620*0.620	Shielding Angle:

Conical surface Flux(90deg):

2385.2 lm  
 %lum = 74.0%  
 %lamp = 74.0%

Conical surface Flux(120deg):

2870.5 lm  
 %lum = 89.0%  
 %lamp = 89.0%

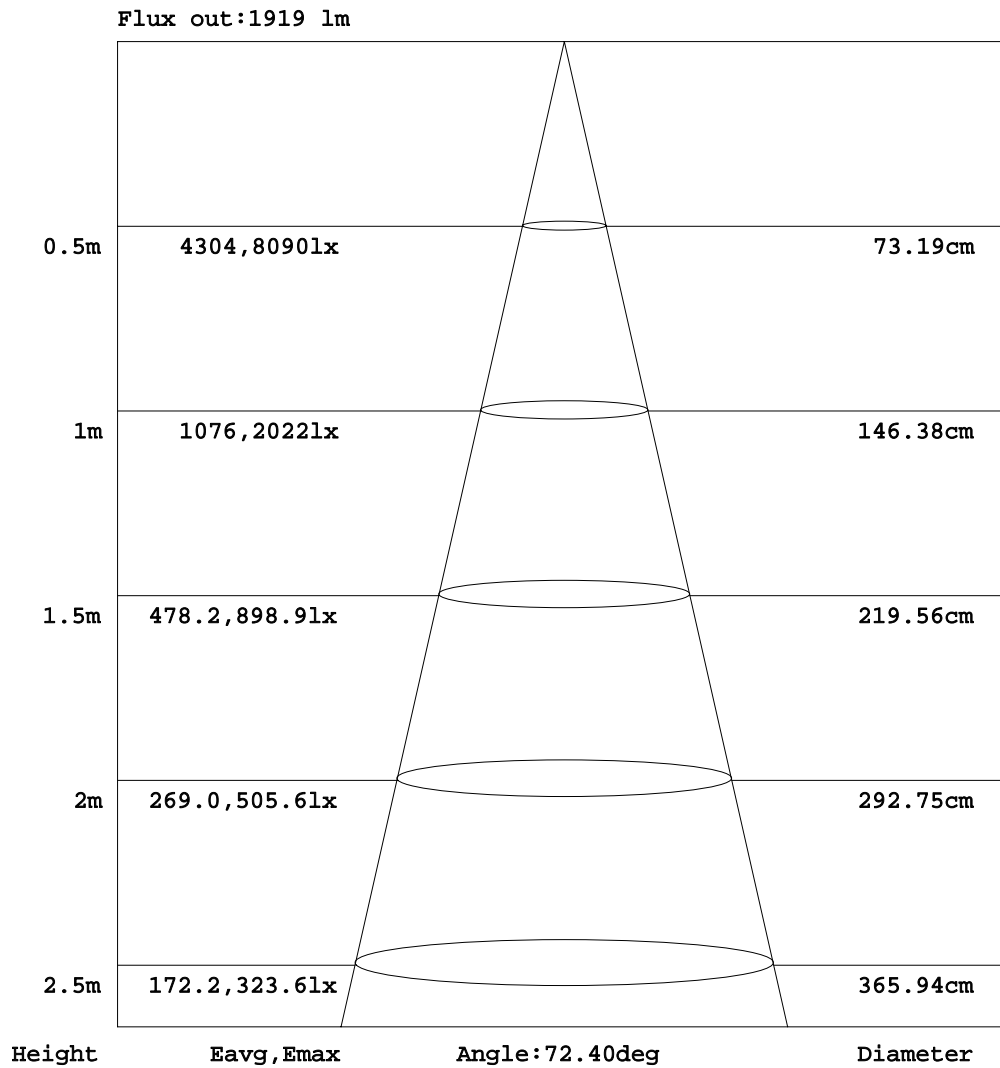


C Range: 0 - 360DEG  
 C Interval: 30.0DEG  
 Test Speed: HIGH  
 Temperature:25.3DEG  
 Operators:LXF  
 Test Date:2021-04-07

γ Range: 0 - 180DEG  
 γ Interval: 1.0DEG  
 Test System:EVERFINE GO-2000A\_V1 SYSTEM V2.0.295  
 Humidity:25.0%  
 Test Distance:7.560m [K=0.9735]  
 Remarks:

AAI Figure

NAME:	TYPE:LED	WEIGHT:
SPEC.:6262M	DIM.: 620*620	SERIAL No.:
MFR.: JT	SUR.:0.620*0.620	Shielding Angle:



Note:The Curves indicate the illuminated area and the average illumination when the luminaire is at different distance.

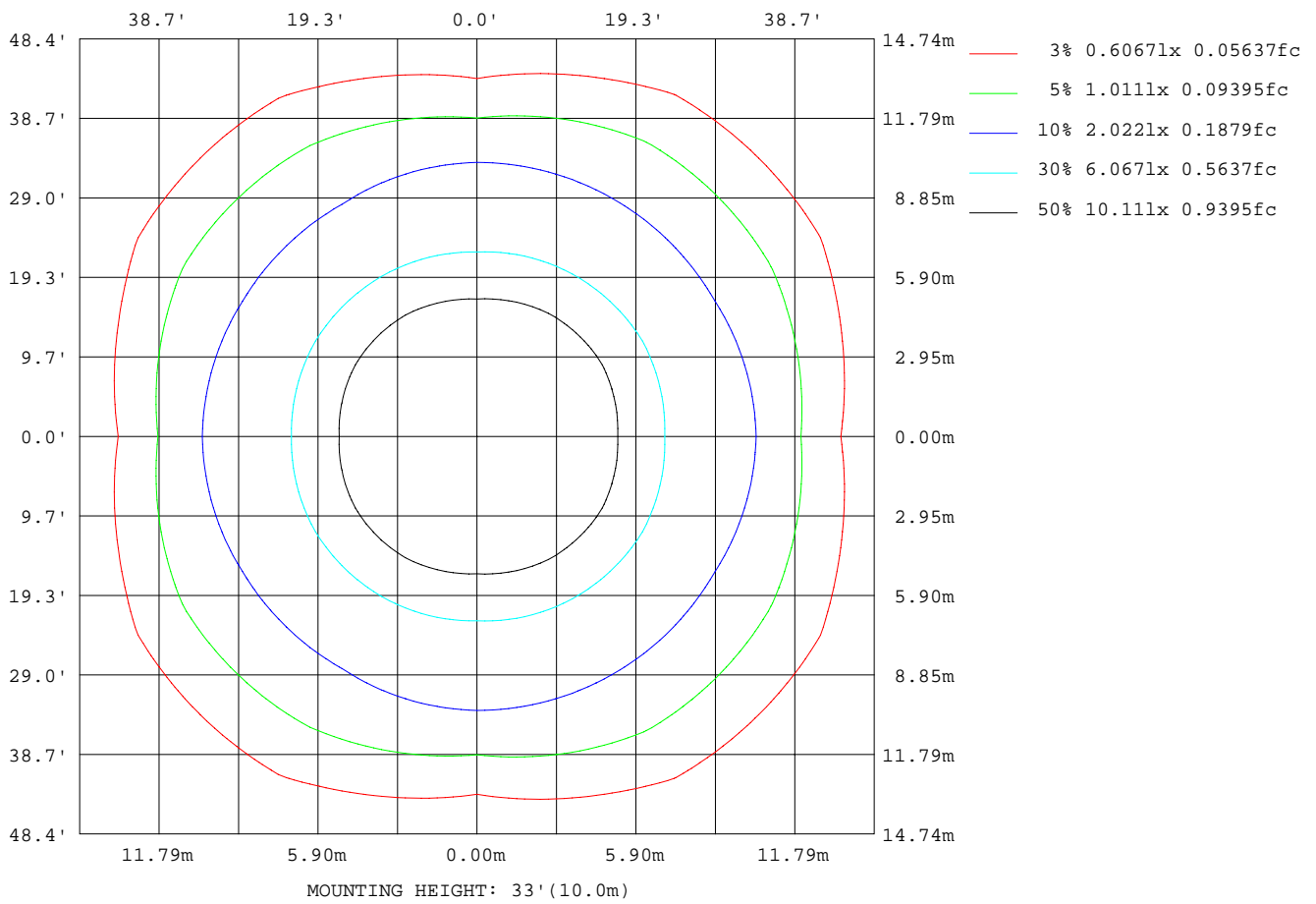
C Range: 0 - 360DEG  
 C Interval: 30.0DEG  
 Test Speed: HIGH  
 Temperature:25.3DEG  
 Operators:LXF  
 Test Date:2021-04-07

γ Range: 0 - 180DEG  
 γ Interval: 1.0DEG  
 Test System:EVERFINE GO-2000A\_V1 SYSTEM V2.0.295  
 Humidity:25.0%  
 Test Distance:7.560m [K=0.9735]  
 Remarks:



ISOLUX DIAGRAM

NAME:	TYPE:LED	WEIGHT:
SPEC.:6262M	DIM.: 620*620	SERIAL No.:
MFR.: JT	SUR.:0.620*0.620	Shielding Angle:



C Range: 0 - 360DEG  
 C Interval: 30.0DEG  
 Test Speed: HIGH  
 Temperature:25.3DEG  
 Operators:LXF  
 Test Date:2021-04-07

γ Range: 0 - 180DEG  
 γ Interval: 1.0DEG  
 Test System:EVERFINE GO-2000A\_V1 SYSTEM V2.0.295  
 Humidity:25.0%  
 Test Distance:7.560m [K=0.9735]  
 Remarks:

LED Avg.L Report

NAME:	TYPE:LED	WEIGHT:
SPEC.:6262M	DIM.: 620*620	SERIAL No.:
MFR.: JT	SUR.:0.620*0.620	Shielding Angle:

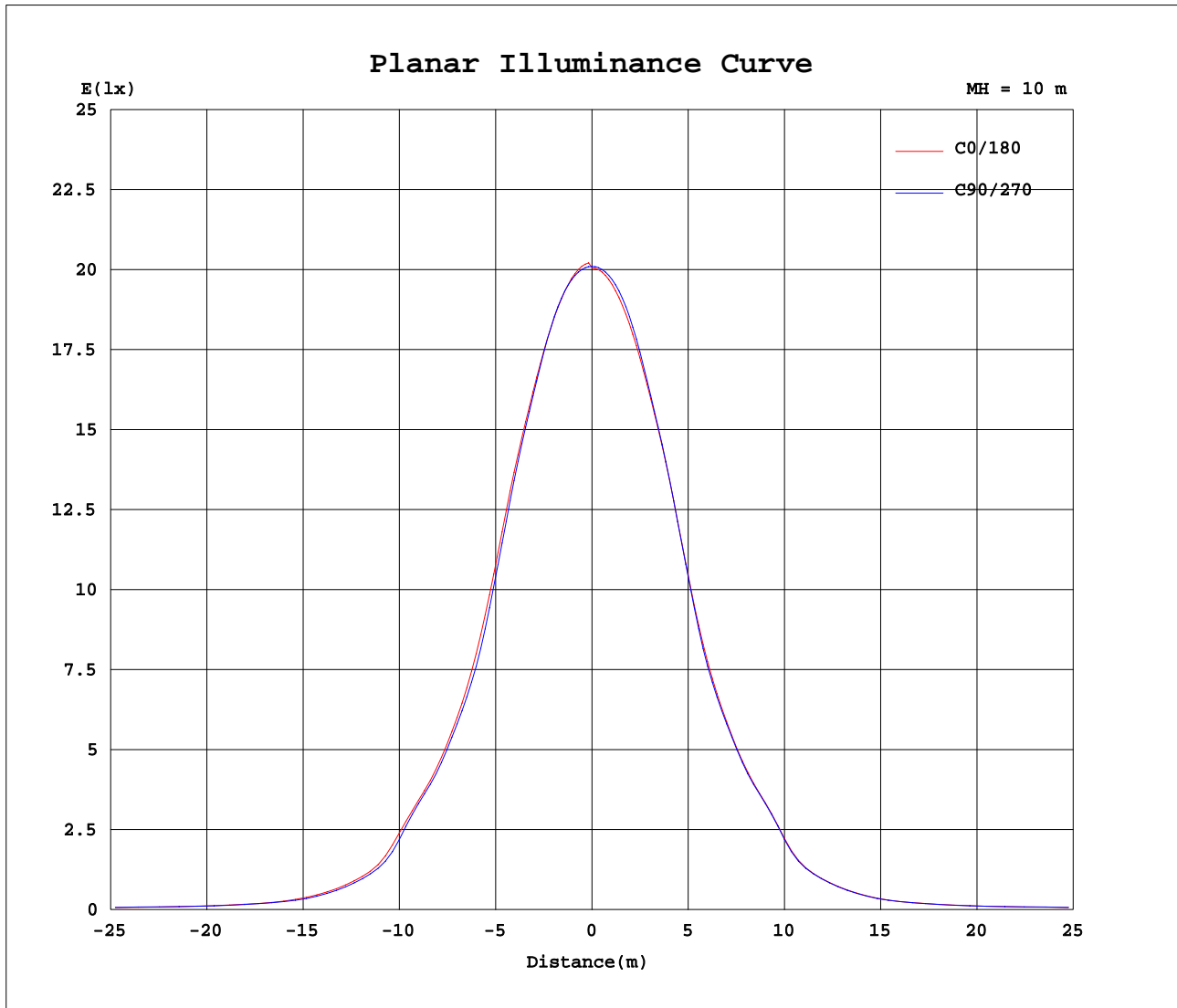
AvgL	cd/m2
L_0~180(65)av	619
L_0~180(75)av	738
L_0~180(85)av	746
L_90~270(65)av	645
L_90~270(75)av	703
L_90~270(85)av	653
L_45(65)av	1049
L_45(75)av	1260
L_45(85)av	1076

Standard: GB/T 29293-2012

C Range: 0 - 360DEG  
 C Interval: 30.0DEG  
 Test Speed: HIGH  
 Temperature:25.3DEG  
 Operators:LXF  
 Test Date:2021-04-07

γ Range: 0 - 180DEG  
 γ Interval: 1.0DEG  
 Test System:EVERFINE GO-2000A\_V1 SYSTEM V2.0.295  
 Humidity:25.0%  
 Test Distance:7.560m [K=0.9735]  
 Remarks:

Planar Illuminance Curve



C Range: 0 - 360DEG  
 C Interval: 30.0DEG  
 Test Speed: HIGH  
 Temperature: 25.3DEG  
 Operators: LXF  
 Test Date: 2021-04-07

γ Range: 0 - 180DEG  
 γ Interval: 1.0DEG  
 Test System: EVERFINE GO-2000A\_V1 SYSTEM V2.0.295  
 Humidity: 25.0%  
 Test Distance: 7.560m [K=0.9735]  
 Remarks:

LUMINOUS DISTRIBUTION INTENSITY DATA

NAME:	TYPE:LED	WEIGHT:
SPEC.:6262M	DIM.: 620*620	SERIAL No.:
MFR.: JT	SUR.:0.620*0.620	Shielding Angle:

Table--1

UNIT: cd

C( DEG) γ (DEG)	0	30	60	90	120	150	180	210	240	270	300	330							
0	2022	2017	2015	2010	2009	2006	2006	2006	2009	2010	2015	2017							
5	2011	2007	2008	2005	2001	1995	1992	1995	2001	2005	2008	2007							
10	1970	1968	1973	1973	1961	1950	1948	1950	1961	1973	1973	1968							
15	1894	1888	1887	1885	1868	1864	1868	1864	1868	1885	1887	1888							
20	1777	1763	1748	1754	1720	1728	1749	1728	1720	1754	1748	1763							
25	1586	1594	1571	1538	1546	1559	1542	1559	1546	1538	1571	1594							
30	1323	1396	1358	1257	1337	1336	1278	1336	1337	1257	1358	1396							
35	1092	1132	1096	1056	1070	1089	1067	1089	1070	1056	1096	1132							
40	898	890	871	873	852	869	881	869	852	873	871	890							
45	678	602	601	621	563	578	629	578	563	621	601	602							
50	394	457	460	366	437	458	369	458	437	366	460	457							
55	245	354	348	223	340	341	228	341	340	223	348	354							
60	157	285	270	151	280	273	155	273	280	151	270	285							
65	127	213	197	131	206	198	125	198	206	131	197	213							
70	133	164	153	132	149	152	134	152	149	132	153	164							
75	93.8	153	152	87.4	144	147	89.5	147	144	87.4	152	153							
80	68.3	84.9	82.9	57.0	73.2	80.4	61.9	80.4	73.2	57.0	82.9	84.9							
85	33.1	44.0	41.3	27.3	42.6	45.1	29.3	45.1	42.6	27.3	41.3	44.0							
90	0.85	1.11	0.30	0.14	0.22	0.18	0.18	0.18	0.22	0.14	0.30	1.11							
95	0.15	0.20	0.18	0.16	0.19	0.21	0.15	0.21	0.19	0.16	0.18	0.20							
100	0.18	0.26	0.22	0.20	0.22	0.25	0.17	0.25	0.22	0.20	0.22	0.26							
105	0.24	0.32	0.27	0.26	0.27	0.30	0.22	0.30	0.27	0.26	0.27	0.32							
110	0.32	0.40	0.36	0.35	0.36	0.39	0.32	0.39	0.36	0.35	0.36	0.40							
115	0.44	0.50	0.47	0.47	0.46	0.49	0.44	0.49	0.46	0.47	0.47	0.50							
120	0.60	0.64	0.62	0.63	0.60	0.64	0.59	0.64	0.60	0.63	0.62	0.64							
125	0.79	0.83	0.79	0.80	0.76	0.81	0.76	0.81	0.76	0.80	0.79	0.83							
130	0.97	1.03	0.98	0.99	0.95	1.01	0.95	1.01	0.95	0.99	0.98	1.03							
135	1.17	1.22	1.17	1.17	1.14	1.19	1.14	1.19	1.14	1.17	1.17	1.22							
140	1.37	1.44	1.37	1.38	1.35	1.39	1.34	1.39	1.35	1.38	1.37	1.44							
145	1.57	1.64	1.56	1.57	1.55	1.57	1.53	1.57	1.55	1.57	1.56	1.64							
150	1.79	1.84	1.78	1.80	1.75	1.77	1.76	1.77	1.75	1.80	1.78	1.84							
155	2.02	2.07	2.00	2.03	1.98	2.01	1.99	2.01	1.98	2.03	2.00	2.07							
160	2.27	2.29	2.23	2.27	2.21	2.24	2.23	2.24	2.21	2.27	2.23	2.29							
165	2.46	2.49	2.43	2.48	2.41	2.46	2.43	2.46	2.41	2.48	2.43	2.49							
170	2.63	2.65	2.60	2.63	2.58	2.64	2.61	2.64	2.58	2.63	2.60	2.65							
175	2.75	2.77	2.72	2.75	2.70	2.77	2.74	2.77	2.70	2.75	2.72	2.77							
180	2.84	2.84	2.79	2.79	2.78	2.81	2.82	2.81	2.78	2.79	2.79	2.84							

C Range: 0 - 360DEG  
 C Interval: 30.0DEG  
 Test Speed: HIGH  
 Temperature:25.3DEG  
 Operators:LXF  
 Test Date:2021-04-07

γ Range: 0 - 180DEG  
 γ Interval: 1.0DEG  
 Test System:EVERFINE GO-2000A\_V1 SYSTEM V2.0.295  
 Humidity:25.0%  
 Test Distance:7.560m [K=0.9735]  
 Remarks: