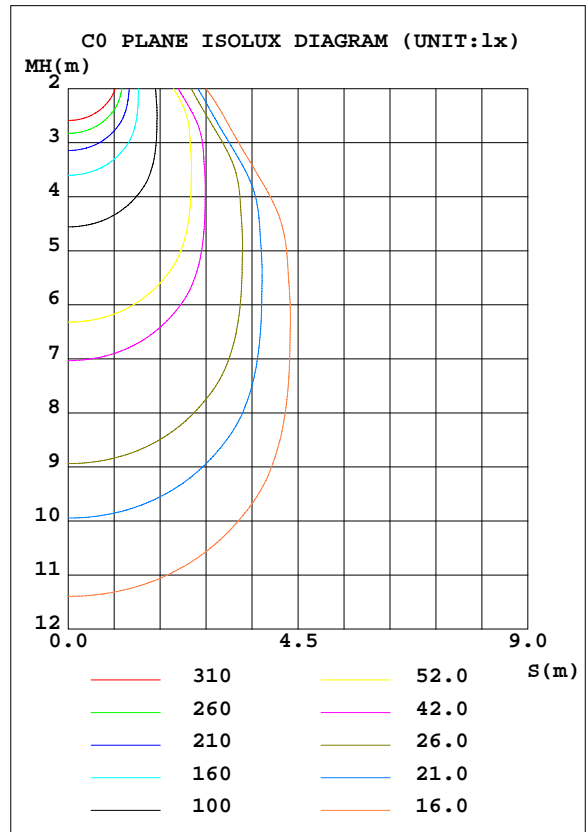
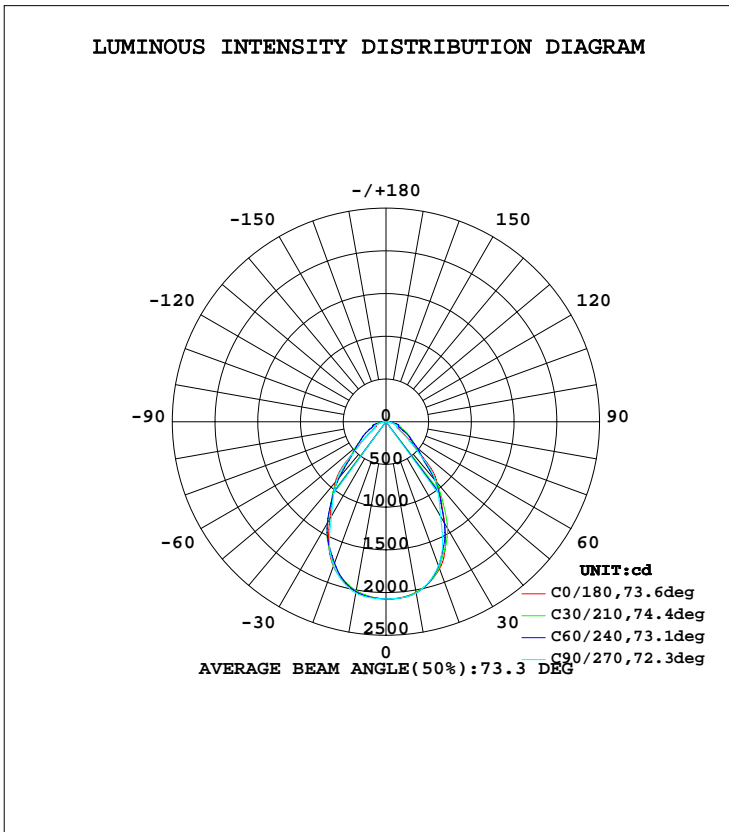


LUMINAIRE PHOTOMETRIC TEST REPORT

NAME:	TYPE:LED	WEIGHT:
SPEC.:6262M	DIM.: 620*620	SERIAL No.:01
MFR.: JT	SUR.:0.620*0.620	Shielding Angle:

DATA OF LAMP		PHOTOMETRIC DATA Eff: 95.89 lm/W			
MODEL	47136401	Imax(cd)	2077	S/MH(C0/180)	1.03
NOMINAL POWER(W)	36	LOR(%)	100.0	S/MH(C90/270)	1.01
RATED VOLTAGE(V)	220-240	TOTAL FLUX(lm)	3317.9	η UP, DN(C0-180)	0.1,50.0
NOMINAL FLUX(lm)	3317.9	CIE CLASS	DIRECT	η UP, DN(C180-360)	0.1,49.8
LAMPS INSIDE	1	η up(%)	0.2	CIBSE SHR NOM	1.00
TEST VOLTAGE(V)	220	η down(%)	99.8	CIBSE SHR MAX	1.15



C Range: 0 - 360DEG
 C Interval: 30.0DEG
 Test Speed: HIGH
 Temperature:25.3DEG
 Operators:LXF
 Test Date:2021-04-07

γ Range: 0 - 180DEG
 γ Interval: 1.0DEG
 Test System:EVERFINE GO-2000A_V1 SYSTEM V2.0.295
 Humidity:25.0%
 Test Distance:7.560m [K=0.9894]
 Remarks:

ZONAL FLUX DIAGRAM

ZONAL FLUX DIAGRAM:

γ	C0	C45	C90	C135	C180	C225	C270	C315	γ	Φ zone	Φ total	lum, lamp
10	2027	2032	2036	2014	2011	2014	2036	2032	0- 10	195.8	195.8	5.9,5.9
20	1832	1810	1794	1766	1800	1766	1794	1810	10- 20	542.6	738.5	22.3,22.3
30	1373	1402	1278	1372	1319	1372	1278	1402	20- 30	731.1	1470	44.3,44.3
40	929.2	906.0	895.5	864.6	921.7	864.6	895.5	906.0	30- 40	697.7	2167	65.3,65.3
50	407.4	472.5	378.5	459.1	388.6	459.1	378.5	472.5	40- 50	487.4	2655	80,80
60	180.9	287.9	153.1	283.0	160.5	283.0	153.1	287.9	50- 60	293.6	2948	88.9,88.9
70	137.8	160.8	137.2	164.8	132.8	164.8	137.2	160.8	60- 70	188.7	3137	94.5,94.5
80	70.43	82.61	61.66	80.79	66.46	80.79	61.66	82.61	70- 80	135.0	3272	98.6,98.6
90	1.511	0.4802	0.6367	0.4805	0.3664	0.4805	0.6367	0.4802	80- 90	40.14	3312	99.8,99.8
100	0.1920	0.2578	0.2319	0.2623	0.1834	0.2623	0.2319	0.2578	90-100	0.2500	3312	99.8,99.8
110	0.3361	0.4001	0.3981	0.4109	0.3365	0.4109	0.3981	0.4001	100-110	0.3262	3313	99.8,99.8
120	0.6157	0.6661	0.7045	0.6843	0.6282	0.6843	0.7045	0.6661	110-120	0.5137	3313	99.9,99.9
130	0.9867	1.069	1.085	1.074	1.001	1.074	1.085	1.069	120-130	0.7684	3314	99.9,99.9
140	1.385	1.491	1.508	1.497	1.420	1.497	1.508	1.491	130-140	0.9782	3315	99.9,99.9
150	1.827	1.923	1.972	1.923	1.853	1.923	1.972	1.923	140-150	1.058	3316	99.9,99.9
160	2.334	2.393	2.443	2.391	2.334	2.391	2.443	2.393	150-160	0.9914	3317	100,100
170	2.710	2.749	2.785	2.751	2.718	2.751	2.785	2.749	160-170	0.7268	3318	100,100
180	2.929	2.920	2.907	2.918	2.933	2.918	2.907	2.920	170-180	0.2700	3318	100,100
DEG	LUMINOUS INTENSITY:cd									UNIT:lm		

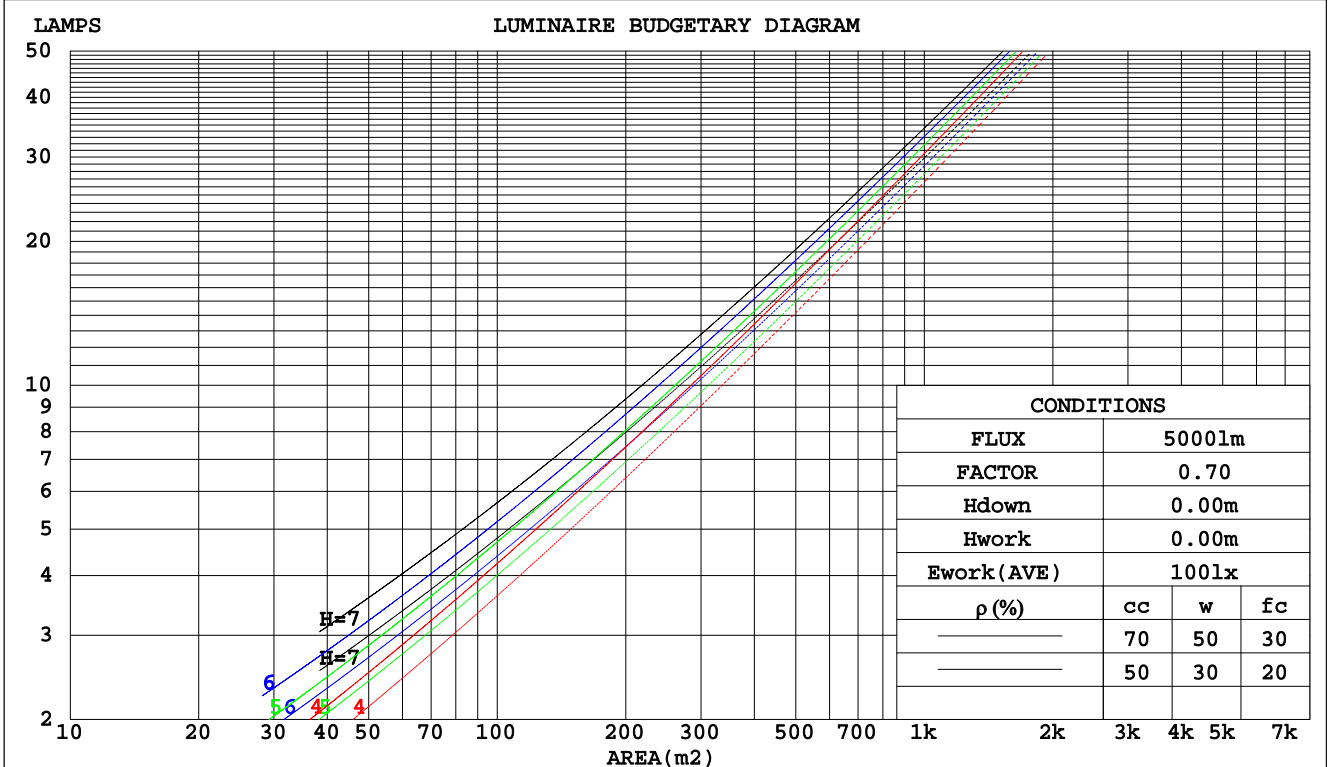
C Range: 0 - 360DEG
 C Interval: 30.0DEG
 Test Speed: HIGH
 Temperature:25.3DEG
 Operators:LXF
 Test Date:2021-04-07

γ Range: 0 - 180DEG
 γ Interval: 1.0DEG
 Test System:EVERFINE GO-2000A_V1 SYSTEM V2.0.295
 Humidity:25.0%
 Test Distance:7.560m [K=0.9894]
 Remarks:

CU AND LUMINAIRE BUDGETARY ESTIMATE DIAGRAM

NAME:	TYPE:LED	WEIGHT:
SPEC.:6262M	DIM.: 620*620	SERIAL No.:01
MFR.: JT	SUR.:0.620*0.620	Shielding Angle:

pcc	80%			70%			50%			30%			10%			0
	50%	30%	10%	50%	30%	10%	50%	30%	10%	50%	30%	10%	50%	30%	10%	0
pw																
pfc																
RCR	RCR:Room Cavity Ratio															
	Coefficients of Utilization(CU)															
0.0	1.19	1.19	1.19	1.16	1.16	1.16	1.11	1.11	1.11	1.06	1.06	1.06	1.02	1.02	1.02	.00
1.0	1.07	1.03	1.00	1.05	1.01	.99	1.00	.98	.95	.97	.94	.92	.93	.91	.90	.88
2.0	.96	.90	.86	.94	.89	.85	.91	.86	.83	.87	.84	.81	.85	.82	.79	.77
3.0	.87	.80	.74	.85	.79	.74	.82	.77	.73	.80	.75	.71	.77	.73	.70	.68
4.0	.79	.71	.66	.77	.71	.65	.75	.69	.64	.73	.68	.64	.71	.66	.63	.61
5.0	.72	.64	.59	.71	.64	.58	.69	.63	.58	.67	.61	.57	.65	.60	.57	.55
6.0	.66	.58	.53	.65	.58	.53	.63	.57	.52	.62	.56	.52	.60	.55	.51	.49
7.0	.61	.53	.48	.60	.53	.48	.59	.52	.47	.57	.51	.47	.56	.51	.47	.45
8.0	.56	.49	.44	.56	.49	.44	.54	.48	.43	.53	.47	.43	.52	.47	.43	.41
9.0	.52	.45	.40	.52	.45	.40	.51	.44	.40	.50	.44	.40	.49	.43	.40	.38
10.0	.49	.42	.37	.48	.42	.37	.47	.41	.37	.47	.41	.37	.46	.40	.37	.35



C Range: 0 - 360DEG
 C Interval: 30.0DEG
 Test Speed: HIGH
 Temperature:25.3DEG
 Operators:LXF
 Test Date:2021-04-07

γ Range: 0 - 180DEG
 γ Interval: 1.0DEG
 Test System:EVERFINE GO-2000A_V1 SYSTEM V2.0.295
 Humidity:25.0%
 Test Distance:7.560m [K=0.9894]
 Remarks:

WEC AND CCEC

NAME:	TYPE:LED	WEIGHT:
SPEC.:6262M	DIM.: 620*620	SERIAL No.:01
MFR.: JT	SUR.:0.620*0.620	Shielding Angle:

ρcc	80%			70%			50%			30%			10%			0
ρw	50%	30%	10%	50%	30%	10%	50%	30%	10%	50%	30%	10%	50%	30%	10%	0
ρfc	20%			20%			20%			20%			20%			0
RCR	RCR:Room Cavity Ratio						Wall Exitance Coefficients(WEC)									
0.0																
1.0	.253	.144	.045	.246	.140	.045	.233	.133	.043	.220	.127	.041	.209	.121	.039	
2.0	.239	.131	.040	.233	.128	.039	.221	.123	.038	.211	.118	.037	.201	.114	.036	
3.0	.223	.119	.036	.218	.117	.035	.208	.113	.034	.199	.109	.033	.190	.105	.033	
4.0	.208	.108	.032	.204	.107	.032	.195	.103	.031	.187	.100	.030	.180	.098	.030	
5.0	.195	.099	.029	.191	.098	.029	.183	.095	.028	.176	.093	.028	.169	.091	.027	
6.0	.183	.092	.026	.179	.091	.026	.172	.088	.026	.166	.086	.025	.160	.084	.025	
7.0	.172	.085	.024	.169	.084	.024	.163	.082	.024	.157	.081	.023	.152	.079	.023	
8.0	.162	.079	.022	.159	.078	.022	.154	.077	.022	.149	.075	.022	.144	.074	.022	
9.0	.153	.074	.021	.151	.074	.021	.146	.072	.020	.141	.071	.020	.137	.070	.020	
10.0	.145	.070	.019	.143	.069	.019	.139	.068	.019	.135	.067	.019	.131	.066	.019	

ρcc	80%			70%			50%			30%			10%			0
ρw	50%	30%	10%	50%	30%	10%	50%	30%	10%	50%	30%	10%	50%	30%	10%	0
ρfc	20%			20%			20%			20%			20%			0
RCR	RCR:Room Cavity Ratio						Ceiling Cavity Exitance Coefficients(CCEC)									
0.0	.192	.192	.192	.164	.164	.164	.112	.112	.112	.064	.064	.064	.021	.021	.021	
1.0	.178	.158	.140	.152	.136	.121	.104	.093	.083	.060	.054	.049	.019	.017	.016	
2.0	.167	.134	.106	.143	.115	.091	.098	.080	.064	.056	.046	.037	.018	.015	.012	
3.0	.157	.115	.082	.134	.100	.071	.092	.069	.050	.053	.040	.030	.017	.013	.010	
4.0	.148	.101	.066	.127	.088	.057	.087	.061	.040	.051	.036	.024	.016	.012	.008	
5.0	.140	.091	.054	.121	.078	.047	.083	.055	.033	.048	.032	.020	.015	.010	.006	
6.0	.133	.082	.045	.115	.071	.039	.079	.050	.028	.046	.029	.016	.015	.010	.005	
7.0	.127	.075	.038	.109	.065	.033	.075	.045	.024	.044	.027	.014	.014	.009	.005	
8.0	.121	.069	.033	.104	.060	.029	.072	.042	.020	.042	.025	.012	.014	.008	.004	
9.0	.115	.064	.029	.099	.055	.025	.069	.039	.018	.040	.023	.011	.013	.008	.004	
10.0	.110	.059	.026	.095	.052	.023	.066	.036	.016	.038	.021	.010	.012	.007	.003	

C Range: 0 - 360DEG
 C Interval: 30.0DEG
 Test Speed: HIGH
 Temperature:25.3DEG
 Operators:LXF
 Test Date:2021-04-07

γ Range: 0 - 180DEG
 γ Interval: 1.0DEG
 Test System:EVERFINE GO-2000A_V1 SYSTEM V2.0.295
 Humidity:25.0%
 Test Distance:7.560m [K=0.9894]
 Remarks:

UGR(Unified Glare Rating) Table

NAME:		TYPE:LED					WEIGHT:				
SPEC.:6262M		DIM.: 620*620					SERIAL No.:01				
MFR.: JT		SUR.:0.620*0.620					Shielding Angle:				
ceiling/cavity	0.7	0.7	0.5	0.5	0.3	0.7	0.7	0.5	0.5	0.3	
walls	0.5	0.3	0.5	0.3	0.3	0.5	0.3	0.5	0.3	0.3	
working plane	0.2	0.2	0.2	0.2	0.2	0.2	0.2	0.2	0.2	0.2	
Room dimensions	Viewed crosswise					Viewed endwise					
x = 2H y = 2H	12.6	13.9	12.9	14.1	14.3	12.3	13.6	12.6	13.8	14.0	
3H	13.5	14.6	13.7	14.9	15.1	13.1	14.2	13.4	14.5	14.7	
4H	14.0	15.1	14.3	15.3	15.6	13.6	14.7	13.9	14.9	15.2	
6H	14.3	15.4	14.7	15.7	15.9	13.9	15.0	14.3	15.3	15.5	
8H	14.5	15.5	14.8	15.8	16.1	14.1	15.1	14.4	15.3	15.6	
12H	14.6	15.6	14.9	15.8	16.1	14.1	15.1	14.5	15.4	15.7	
4H 2H	13.0	14.2	13.3	14.4	14.6	12.8	13.9	13.1	14.1	14.4	
3H	14.2	15.2	14.6	15.5	15.8	13.8	14.8	14.1	15.1	15.4	
4H	15.0	15.9	15.4	16.2	16.5	14.6	15.4	14.9	15.8	16.1	
6H	15.5	16.3	15.9	16.7	17.0	15.1	15.9	15.5	16.3	16.6	
8H	15.7	16.4	16.1	16.8	17.2	15.3	16.0	15.7	16.4	16.8	
12H	15.9	16.5	16.3	16.9	17.3	15.4	16.1	15.8	16.5	16.9	
8H 4H	15.4	16.1	15.8	16.5	16.9	15.1	15.8	15.5	16.2	16.5	
6H	16.1	16.7	16.5	17.1	17.5	15.8	16.4	16.2	16.8	17.2	
8H	16.4	16.9	16.8	17.3	17.8	16.0	16.5	16.5	17.0	17.4	
12H	16.6	17.1	17.1	17.5	18.0	16.2	16.7	16.7	17.1	17.6	
12H 4H	15.4	16.1	15.9	16.5	16.9	15.1	15.8	15.5	16.1	16.5	
6H	16.1	16.7	16.6	17.1	17.5	15.8	16.4	16.3	16.8	17.3	
8H	16.5	16.9	16.9	17.4	17.8	16.1	16.6	16.6	17.0	17.5	
Variations with the observer position at spacings:											
S = 1.0H	+ 0.4 / - 0.5					+ 0.4 / - 0.5					
1.5H	+ 0.4 / - 0.5					+ 0.4 / - 0.6					
2.0H	+ 0.8 / - 1.1					+ 0.7 / - 1.1					

CIE Pub.117 Corrected 3318 lm Total Lamp Luminous Flux.(8log(F/F0) = 4.2)

C Range: 0 - 360DEG
 C Interval: 30.0DEG
 Test Speed: HIGH
 Temperature:25.3DEG
 Operators:LXF
 Test Date:2021-04-07

γ Range: 0 - 180DEG
 γ Interval: 1.0DEG
 Test System:EVERFINE GO-2000A_V1 SYSTEM V2.0.295
 Humidity:25.0%
 Test Distance:7.560m [K=0.9894]
 Remarks:

UTILIZATION FACTORS TABLE

NAME:	TYPE:LED	WEIGHT:
SPEC.:6262M	DIM.: 620*620	SERIAL No.:01
MFR.: JT	SUR.:0.620*0.620	Shielding Angle:

REFLECTANCE										
Ceiling	0.8	0.8	0.8	0.7	0.7	0.7	0.5	0.5	0.5	0
Walls	0.7	0.5	0.3	0.7	0.5	0.3	0.7	0.5	0.3	0
Working plane	0.2	0.2	0.2	0.2	0.2	0.2	0.2	0.2	0.2	0
ROOM INDEX	UTILIZATION FACTORS(PERCENT) $k(RI) \times RCR = 5$									
k = 0.60	70	61	55	69	60	55	68	60	55	50
0.80	79	70	64	78	70	64	77	69	64	58
1.00	86	77	72	85	77	72	83	78	71	65
1.25	92	84	78	91	83	78	88	82	77	71
1.50	96	88	83	95	88	83	92	86	81	75
2.00	101	94	89	99	93	89	96	91	87	80
2.50	104	98	93	102	97	92	98	94	90	83
3.00	106	101	97	104	100	96	101	97	93	86
4.00	109	105	101	107	103	100	103	100	97	89
5.00	111	108	104	109	106	103	105	102	100	91
ROOM INDEX	UF(total)									Direct
According to DIN EN 13032-2 2004			Suspended				SHRNOM = 1.25			

C Range: 0 - 360DEG
 C Interval: 30.0DEG
 Test Speed: HIGH
 Temperature:25.3DEG
 Operators:LXF
 Test Date:2021-04-07

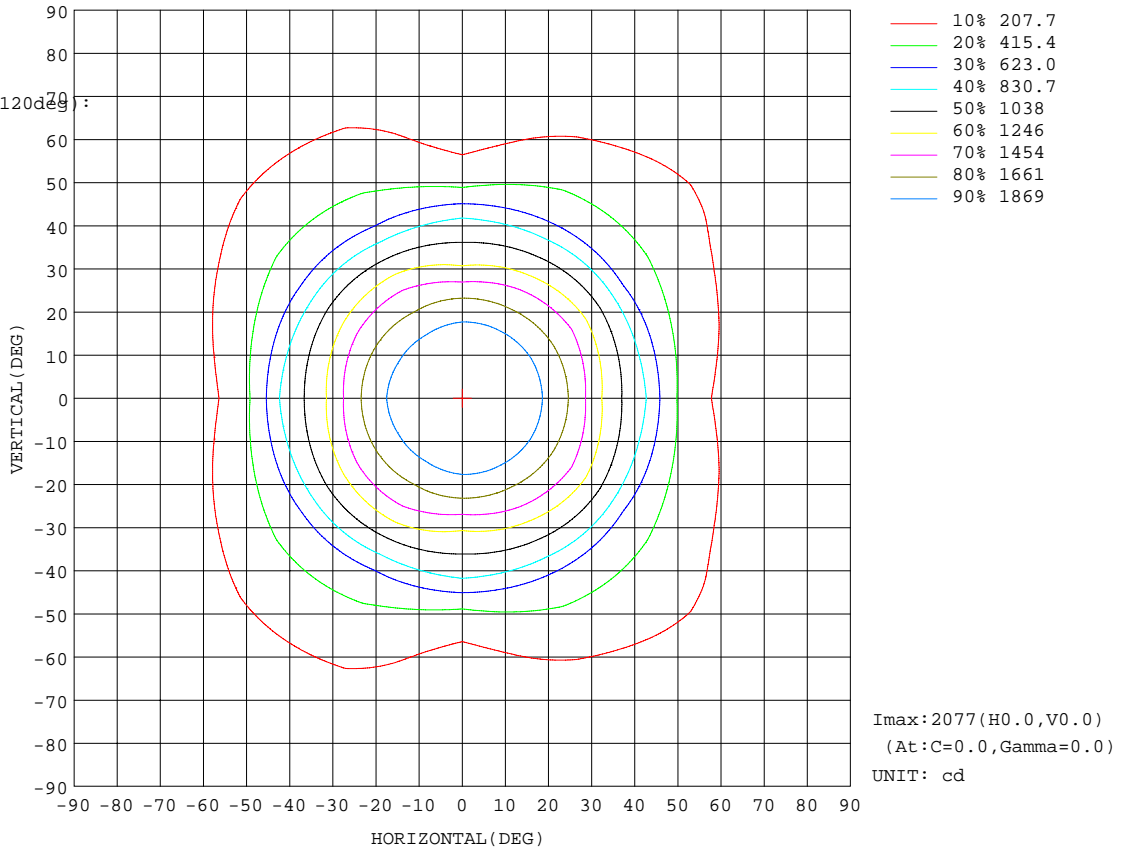
γ Range: 0 - 180DEG
 γ Interval: 1.0DEG
 Test System:EVERFINE GO-2000A_V1 SYSTEM V2.0.295
 Humidity:25.0%
 Test Distance:7.560m [K=0.9894]
 Remarks:

ISOCANDELA DIAGRAM

NAME:	TYPE:LED	WEIGHT:
SPEC.:6262M	DIM.: 620*620	SERIAL No.:01
MFR.: JT	SUR.:0.620*0.620	Shielding Angle:

Conical surface Flux(90deg):
 2446.1 lm
 %lum = 73.7%
 %lamp = 73.7%

Conical surface Flux(120deg):
 2948.2 lm
 %lum = 88.9%
 %lamp = 88.9%

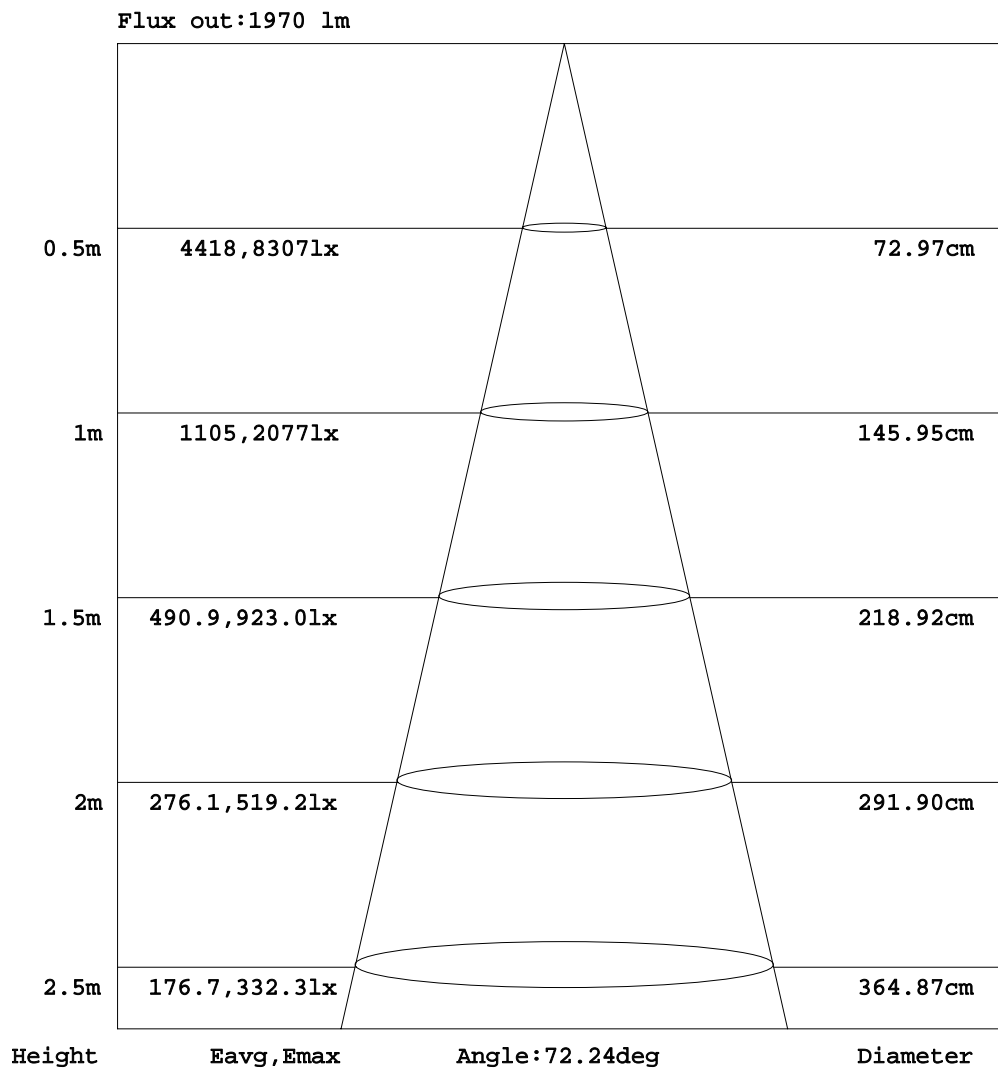


C Range: 0 - 360DEG
 C Interval: 30.0DEG
 Test Speed: HIGH
 Temperature:25.3DEG
 Operators:LXF
 Test Date:2021-04-07

γ Range: 0 - 180DEG
 γ Interval: 1.0DEG
 Test System:EVERFINE GO-2000A_V1 SYSTEM V2.0.295
 Humidity:25.0%
 Test Distance:7.560m [K=0.9894]
 Remarks:

AAI Figure

NAME:	TYPE:LED	WEIGHT:
SPEC.:6262M	DIM.: 620*620	SERIAL No.:01
MFR.: JT	SUR.:0.620*0.620	Shielding Angle:



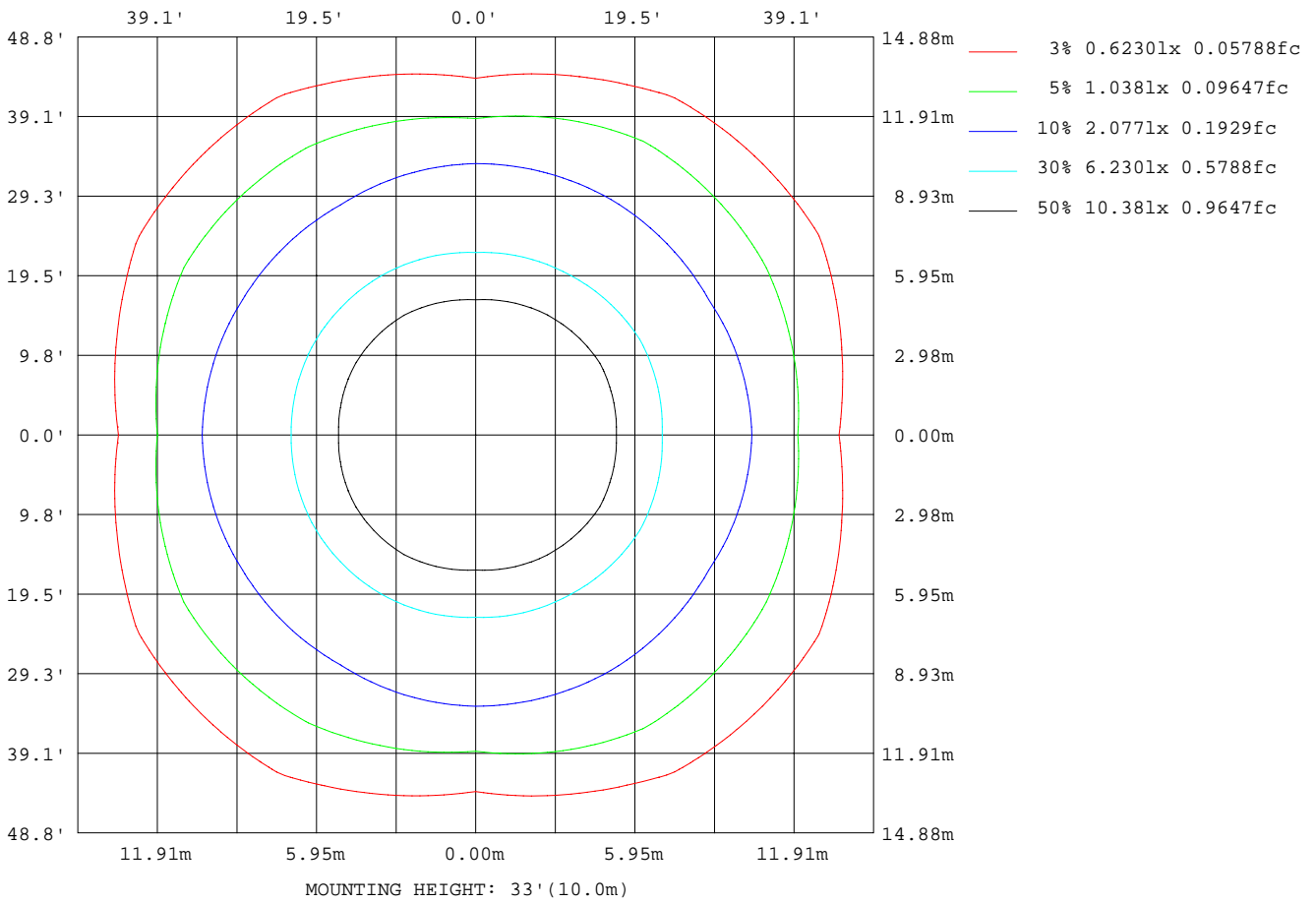
Note:The Curves indicate the illuminated area and the average illumination when the luminaire is at different distance.

C Range: 0 - 360DEG
 C Interval: 30.0DEG
 Test Speed: HIGH
 Temperature:25.3DEG
 Operators:LXF
 Test Date:2021-04-07

γ Range: 0 - 180DEG
 γ Interval: 1.0DEG
 Test System:EVERFINE GO-2000A_V1 SYSTEM V2.0.295
 Humidity:25.0%
 Test Distance:7.560m [K=0.9894]
 Remarks:

ISOLUX DIAGRAM

NAME:	TYPE:LED	WEIGHT:
SPEC.:6262M	DIM.: 620*620	SERIAL No.:01
MFR.: JT	SUR.:0.620*0.620	Shielding Angle:



C Range: 0 - 360DEG
 C Interval: 30.0DEG
 Test Speed: HIGH
 Temperature:25.3DEG
 Operators:LXF
 Test Date:2021-04-07

γ Range: 0 - 180DEG
 γ Interval: 1.0DEG
 Test System:EVERFINE GO-2000A_V1 SYSTEM V2.0.295
 Humidity:25.0%
 Test Distance:7.560m [K=0.9894]
 Remarks:

LED Avg.L Report

NAME:	TYPE:LED	WEIGHT:
SPEC.:6262M	DIM.: 620*620	SERIAL No.:01
MFR.: JT	SUR.:0.620*0.620	Shielding Angle:

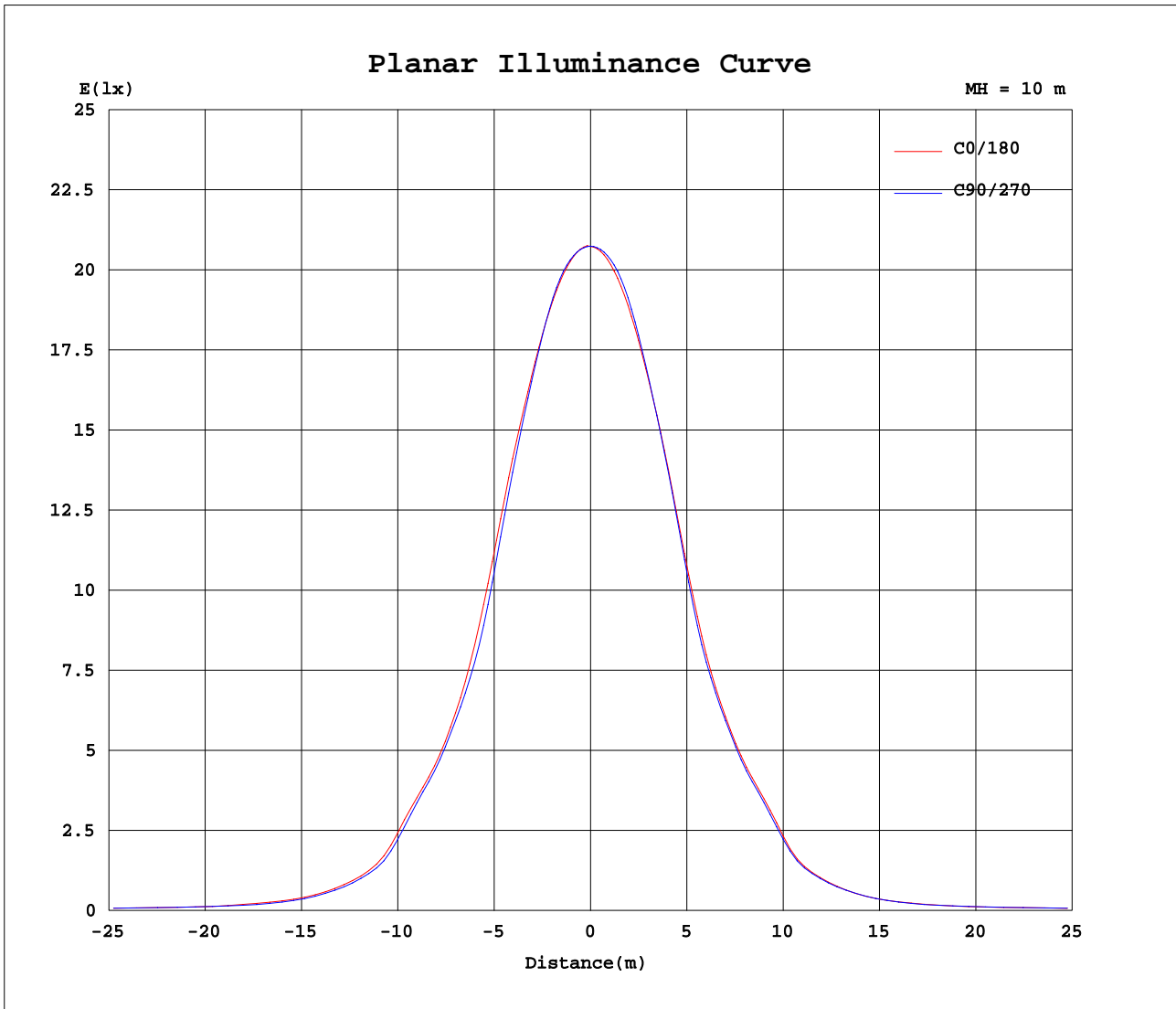
AvgL	cd/m2
L_0~180(65)av	707
L_0~180(75)av	827
L_0~180(85)av	788
L_90~270(65)av	722
L_90~270(75)av	800
L_90~270(85)av	760
L_45(65)av	1160
L_45(75)av	1402
L_45(85)av	1289

Standard: GB/T 29293-2012

C Range: 0 - 360DEG
 C Interval: 30.0DEG
 Test Speed: HIGH
 Temperature:25.3DEG
 Operators:LXF
 Test Date:2021-04-07

γ Range: 0 - 180DEG
 γ Interval: 1.0DEG
 Test System:EVERFINE GO-2000A_V1 SYSTEM V2.0.295
 Humidity:25.0%
 Test Distance:7.560m [K=0.9894]
 Remarks:

Planar Illuminance Curve



C Range: 0 - 360DEG
 C Interval: 30.0DEG
 Test Speed: HIGH
 Temperature: 25.3DEG
 Operators: LXF
 Test Date: 2021-04-07

γ Range: 0 - 180DEG
 γ Interval: 1.0DEG
 Test System: EVERFINE GO-2000A_V1 SYSTEM V2.0.295
 Humidity: 25.0%
 Test Distance: 7.560m [K=0.9894]
 Remarks:

LUMINOUS DISTRIBUTION INTENSITY DATA

NAME:	TYPE:LED	WEIGHT:
SPEC.:6262M	DIM.: 620*620	SERIAL No.:01
MFR.: JT	SUR.:0.620*0.620	Shielding Angle:

Table--1

UNIT: cd

C(DEG) γ (DEG)	0	30	60	90	120	150	180	210	240	270	300	330							
0	2077	2076	2075	2074	2074	2073	2073	2073	2074	2074	2075	2076							
5	2066	2066	2068	2068	2063	2058	2056	2058	2063	2068	2068	2066							
10	2027	2029	2036	2036	2021	2008	2011	2008	2021	2036	2036	2029							
15	1951	1948	1945	1942	1922	1917	1927	1917	1922	1942	1945	1948							
20	1832	1820	1799	1794	1761	1771	1800	1771	1761	1794	1799	1820							
25	1642	1637	1603	1568	1585	1599	1586	1599	1585	1568	1603	1637							
30	1373	1440	1364	1278	1375	1369	1319	1369	1375	1278	1364	1440							
35	1124	1169	1111	1080	1103	1116	1102	1116	1103	1080	1111	1169							
40	929	920	892	896	849	881	922	881	849	896	892	920							
45	688	600	616	630	581	602	658	602	581	630	616	600							
50	407	460	485	379	448	470	389	470	448	379	485	460							
55	263	374	354	239	356	355	238	355	356	239	354	374							
60	181	300	276	153	289	277	160	277	289	153	276	300							
65	136	232	193	137	219	201	133	201	219	137	193	232							
70	138	174	148	137	167	162	133	162	167	137	148	174							
75	101	160	150	93.2	154	159	92.0	159	154	93.2	150	160							
80	70.4	82.9	82.3	61.7	76.5	85.1	66.5	85.1	76.5	61.7	82.3	82.9							
85	33.0	53.4	48.4	29.8	45.6	45.8	28.8	45.8	45.6	29.8	48.4	53.4							
90	1.51	0.63	0.33	0.64	0.46	0.51	0.37	0.51	0.46	0.64	0.33	0.63							
95	0.18	0.23	0.21	0.18	0.21	0.22	0.17	0.22	0.21	0.18	0.21	0.23							
100	0.19	0.28	0.24	0.23	0.25	0.28	0.18	0.28	0.25	0.23	0.24	0.28							
105	0.24	0.34	0.30	0.31	0.31	0.34	0.25	0.34	0.31	0.31	0.30	0.34							
110	0.34	0.42	0.38	0.40	0.40	0.42	0.34	0.42	0.40	0.40	0.38	0.42							
115	0.46	0.53	0.50	0.53	0.51	0.55	0.47	0.55	0.51	0.53	0.50	0.53							
120	0.62	0.67	0.66	0.70	0.67	0.70	0.63	0.70	0.67	0.70	0.66	0.67							
125	0.79	0.86	0.85	0.89	0.85	0.89	0.82	0.89	0.85	0.89	0.85	0.86							
130	0.99	1.07	1.07	1.08	1.06	1.09	1.00	1.09	1.06	1.08	1.07	1.07							
135	1.18	1.28	1.27	1.30	1.27	1.30	1.21	1.30	1.27	1.30	1.27	1.28							
140	1.39	1.50	1.48	1.51	1.48	1.52	1.42	1.52	1.48	1.51	1.48	1.50							
145	1.60	1.71	1.69	1.72	1.70	1.70	1.63	1.70	1.70	1.72	1.69	1.71							
150	1.83	1.93	1.92	1.97	1.93	1.92	1.85	1.92	1.93	1.97	1.92	1.93							
155	2.07	2.17	2.15	2.22	2.16	2.16	2.10	2.16	2.16	2.22	2.15	2.17							
160	2.33	2.40	2.39	2.44	2.39	2.40	2.33	2.40	2.39	2.44	2.39	2.40							
165	2.54	2.60	2.59	2.63	2.58	2.60	2.54	2.60	2.58	2.63	2.59	2.60							
170	2.71	2.76	2.74	2.78	2.73	2.78	2.72	2.78	2.73	2.78	2.74	2.76							
175	2.85	2.89	2.85	2.89	2.85	2.89	2.86	2.89	2.85	2.89	2.85	2.89							
180	2.93	2.94	2.90	2.91	2.92	2.92	2.93	2.92	2.92	2.91	2.90	2.94							

C Range: 0 - 360DEG
 C Interval: 30.0DEG
 Test Speed: HIGH
 Temperature:25.3DEG
 Operators:LXF
 Test Date:2021-04-07

γ Range: 0 - 180DEG
 γ Interval: 1.0DEG
 Test System:EVERFINE GO-2000A_V1 SYSTEM V2.0.295
 Humidity:25.0%
 Test Distance:7.560m [K=0.9894]
 Remarks: