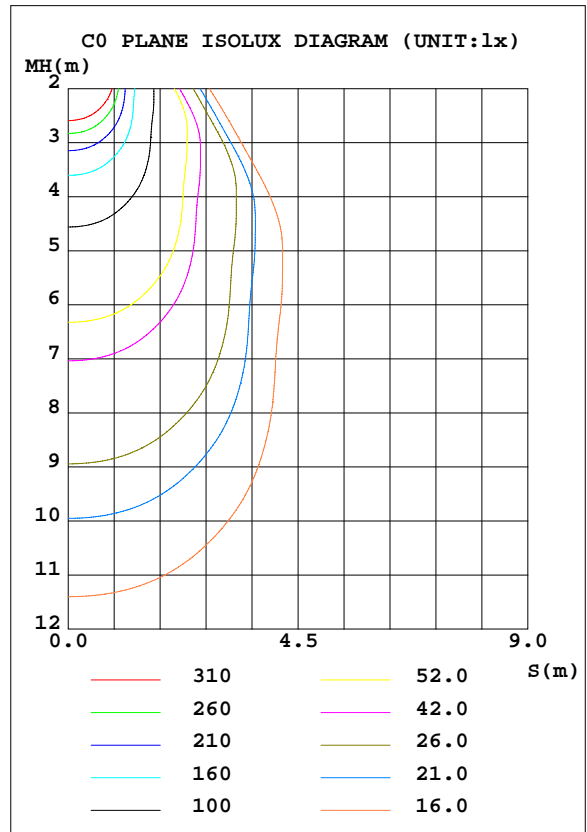
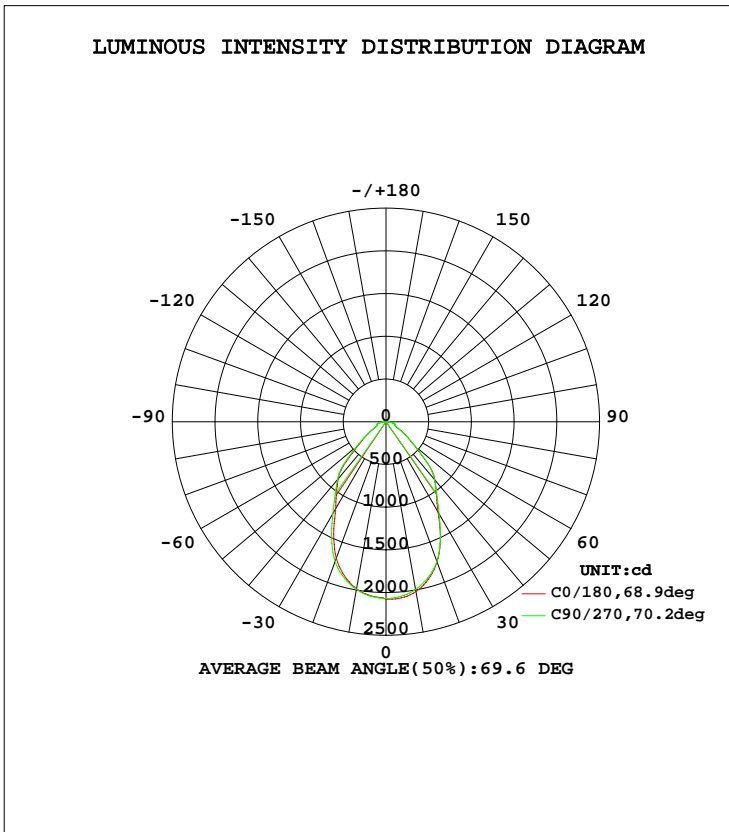


LUMINAIRE PHOTOMETRIC TEST REPORT

NAME: Panel light	TYPE:LED	WEIGHT:
SPEC.:3012M	DIM.: 295*1195	SERIAL No.:
MFR.: JT	SUR.:0.295*1.195	Shielding Angle:

DATA OF LAMP		PHOTOMETRIC DATA				Eff: 92.18 lm/W
MODEL	47146401	Imax(cd)	2079	S/MH(C0/180)	0.97	
NOMINAL POWER(W)	36	LOR(%)	100.0	S/MH(C90/270)	0.99	
RATED VOLTAGE(V)	220-240	TOTAL FLUX(lm)	3217.6	η UP, DN(C0-180)	0.1,50.0	
NOMINAL FLUX(lm)	3217.6	CIE CLASS	DIRECT	η UP, DN(C180-360)	0.1,49.8	
LAMPS INSIDE	1	η up(%)	0.2	CIBSE SHR NOM	1.00	
TEST VOLTAGE(V)	220	η down(%)	99.8	CIBSE SHR MAX	1.10	



C Range: 0 - 360DEG
 C Interval: 22.5DEG
 Test Speed: HIGH
 Temperature:25.3DEG
 Operators:LXF
 Test Date:2021-04-07

γ Range: 0 - 180DEG
 γ Interval: 1.0DEG
 Test System:EVERFINE GO-2000A_V1 SYSTEM V2.0.295
 Humidity:25.0%
 Test Distance:7.560m [K=1.0000]
 Remarks:

ZONAL FLUX DIAGRAM

ZONAL FLUX DIAGRAM:

γ	C0	C45	C90	C135	C180	C225	C270	C315	γ	Φ zone	Φ total	lum, lamp
10	2019	2005	1994	1983	1986	1983	1994	2005	0- 10	194.1	194.1	6.03,6.03
20	1749	1734	1740	1675	1703	1675	1740	1734	10- 20	528.3	722.5	22.5,22.5
30	1219	1356	1244	1304	1180	1304	1244	1356	20- 30	690.3	1413	43.9,43.9
40	890.7	850.9	882.7	831.5	872.9	831.5	882.7	850.9	30- 40	664.8	2078	64.6,64.6
50	435.9	410.0	447.8	393.9	417.6	393.9	447.8	410.0	40- 50	486.5	2564	79.7,79.7
60	188.3	248.0	184.8	243.7	178.0	243.7	184.8	248.0	50- 60	281.8	2846	88.4,88.4
70	118.8	166.6	111.2	164.5	115.6	164.5	111.2	166.6	60- 70	194.1	3040	94.5,94.5
80	78.60	106.5	78.20	105.8	73.80	105.8	78.20	106.5	70- 80	125.0	3165	98.4,98.4
90	0.8485	0.3898	0.2226	0.3945	0.5557	0.3945	0.2226	0.3898	80- 90	46.82	3212	99.8,99.8
100	0.1697	0.2363	0.2052	0.2738	0.1742	0.2738	0.2052	0.2363	90-100	0.3995	3212	99.8,99.8
110	0.3031	0.3922	0.3836	0.3750	0.3165	0.3750	0.3836	0.3922	100-110	0.3207	3213	99.8,99.8
120	0.5531	0.6109	0.6513	0.6338	0.5750	0.6338	0.6513	0.6109	110-120	0.4892	3213	99.9,99.9
130	0.8962	0.9731	1.008	0.9998	0.9408	0.9998	1.008	0.9731	120-130	0.7187	3214	99.9,99.9
140	1.295	1.397	1.392	1.401	1.353	1.401	1.392	1.397	130-140	0.9164	3215	99.9,99.9
150	1.754	1.830	1.817	1.795	1.825	1.795	1.817	1.830	140-150	1.004	3216	99.9,99.9
160	2.250	2.281	2.263	2.245	2.308	2.245	2.263	2.281	150-160	0.9461	3217	100,100
170	2.715	2.656	2.616	2.625	2.768	2.625	2.616	2.656	160-170	0.7006	3217	100,100
180	2.978	2.858	2.822	2.826	2.969	2.826	2.822	2.858	170-180	0.2640	3218	100,100
DEG	LUMINOUS INTENSITY:cd									UNIT:lm		

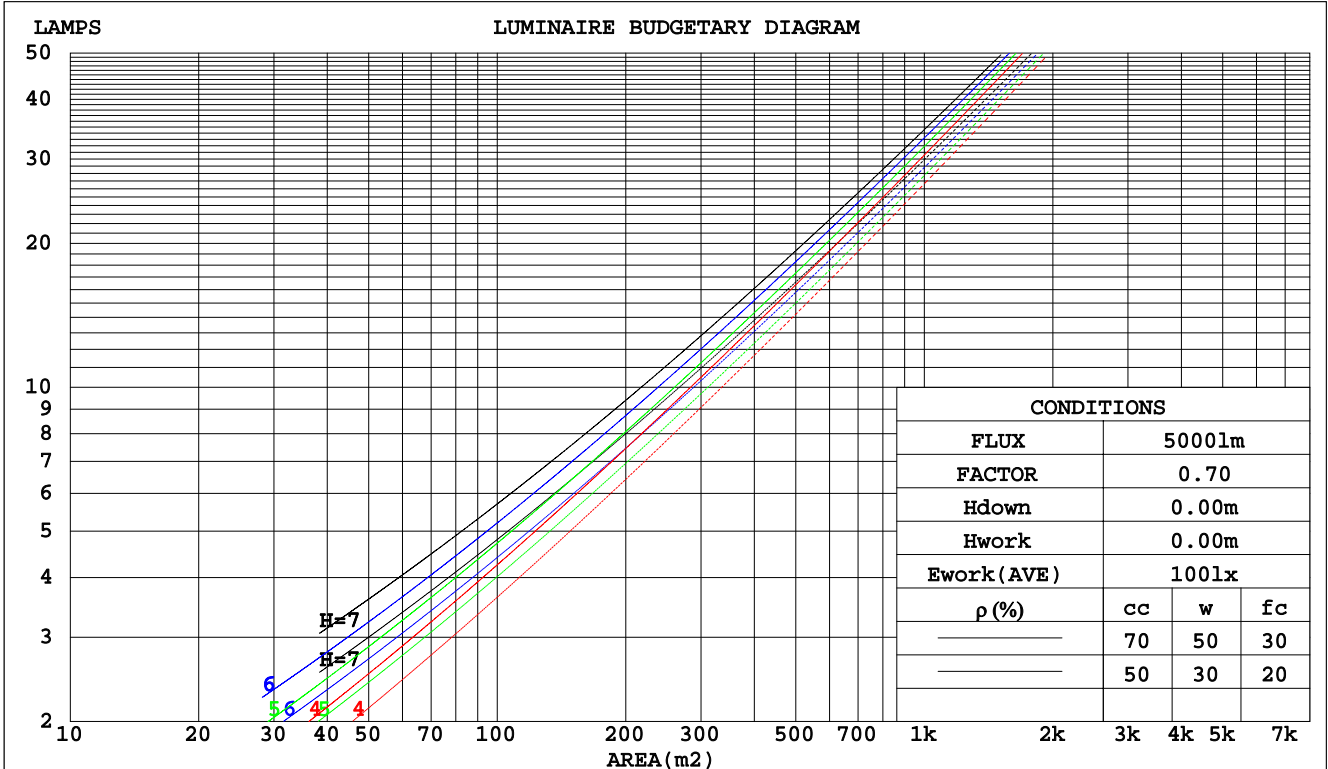
C Range: 0 - 360DEG
 C Interval: 22.5DEG
 Test Speed: HIGH
 Temperature:25.3DEG
 Operators:LXF
 Test Date:2021-04-07

γ Range: 0 - 180DEG
 γ Interval: 1.0DEG
 Test System:EVERFINE GO-2000A_V1 SYSTEM V2.0.295
 Humidity:25.0%
 Test Distance:7.560m [K=1.0000]
 Remarks:

CU AND LUMINAIRE BUDGETARY ESTIMATE DIAGRAM

NAME: Panel light	TYPE:LED	WEIGHT:
SPEC.:3012M	DIM.: 295*1195	SERIAL No.:
MFR.: JT	SUR.:0.295*1.195	Shielding Angle:

pcc	80%			70%			50%			30%			10%			0
	50%	30%	10%	50%	30%	10%	50%	30%	10%	50%	30%	10%	50%	30%	10%	0
pw																0
pfc																0
RCR	RCR:Room Cavity Ratio															
	Coefficients of Utilization(CU)															
0.0	1.19	1.19	1.19	1.16	1.16	1.16	1.11	1.11	1.11	1.06	1.06	1.06	1.02	1.02	1.02	.00
1.0	1.07	1.03	.00	1.04	1.01	.98	1.00	.98	.95	.96	.94	.92	.93	.91	.90	.88
2.0	.96	.90	.85	.94	.89	.84	.90	.86	.82	.87	.84	.81	.84	.81	.79	.77
3.0	.86	.80	.74	.85	.79	.74	.82	.77	.72	.79	.75	.71	.77	.73	.70	.68
4.0	.79	.71	.65	.77	.70	.65	.75	.69	.64	.73	.67	.63	.71	.66	.62	.61
5.0	.72	.64	.58	.71	.63	.58	.69	.62	.57	.67	.61	.57	.65	.60	.56	.54
6.0	.66	.58	.53	.65	.58	.52	.63	.57	.52	.62	.56	.51	.60	.55	.51	.49
7.0	.61	.53	.48	.60	.53	.48	.58	.52	.47	.57	.51	.47	.56	.51	.47	.45
8.0	.56	.49	.44	.56	.48	.43	.54	.48	.43	.53	.47	.43	.52	.47	.43	.41
9.0	.52	.45	.40	.52	.45	.40	.51	.44	.40	.50	.44	.40	.49	.43	.39	.38
10.0	.49	.42	.37	.48	.41	.37	.47	.41	.37	.46	.41	.37	.46	.40	.36	.35



C Range: 0 - 360DEG
 C Interval: 22.5DEG
 Test Speed: HIGH
 Temperature:25.3DEG
 Operators:LXF
 Test Date:2021-04-07

γ Range: 0 - 180DEG
 γ Interval: 1.0DEG
 Test System:EVERFINE GO-2000A_V1 SYSTEM V2.0.295
 Humidity:25.0%
 Test Distance:7.560m [K=1.0000]
 Remarks:

WEC AND CCEC

NAME: Panel light	TYPE:LED	WEIGHT:
SPEC.:3012M	DIM.: 295*1195	SERIAL No.:
MFR.: JT	SUR.:0.295*1.195	Shielding Angle:

ρcc	80%			70%			50%			30%			10%			0
ρw	50%	30%	10%	50%	30%	10%	50%	30%	10%	50%	30%	10%	50%	30%	10%	0
ρfc	20%			20%			20%			20%			20%			0
RCR	RCR:Room Cavity Ratio						Wall Exitance Coefficients(WEC)									
0.0																
1.0	.255	.145	.046	.248	.142	.045	.235	.135	.043	.223	.129	.041	.212	.123	.040	
2.0	.240	.132	.040	.234	.129	.040	.223	.124	.038	.212	.119	.037	.203	.115	.036	
3.0	.224	.119	.036	.219	.117	.035	.209	.113	.034	.200	.110	.034	.191	.106	.033	
4.0	.209	.109	.032	.205	.107	.032	.196	.104	.031	.188	.101	.030	.180	.098	.030	
5.0	.196	.100	.029	.192	.098	.029	.184	.096	.028	.177	.093	.028	.170	.091	.027	
6.0	.183	.092	.026	.180	.091	.026	.173	.089	.026	.167	.087	.025	.161	.085	.025	
7.0	.172	.085	.024	.169	.084	.024	.163	.083	.024	.158	.081	.023	.152	.079	.023	
8.0	.163	.079	.022	.160	.079	.022	.154	.077	.022	.149	.076	.022	.144	.074	.022	
9.0	.154	.074	.021	.151	.074	.021	.146	.072	.020	.142	.071	.020	.137	.070	.020	
10.0	.146	.070	.019	.143	.069	.019	.139	.068	.019	.135	.067	.019	.131	.066	.019	

ρcc	80%			70%			50%			30%			10%			0
ρw	50%	30%	10%	50%	30%	10%	50%	30%	10%	50%	30%	10%	50%	30%	10%	0
ρfc	20%			20%			20%			20%			20%			0
RCR	RCR:Room Cavity Ratio						Ceiling Cavity Exitance Coefficients(CCEC)									
0.0	.192	.192	.192	.164	.164	.164	.112	.112	.112	.064	.064	.064	.021	.021	.021	
1.0	.178	.158	.140	.152	.136	.121	.104	.093	.083	.060	.054	.048	.019	.017	.016	
2.0	.167	.134	.106	.143	.115	.091	.098	.080	.064	.056	.046	.037	.018	.015	.012	
3.0	.157	.115	.082	.135	.100	.071	.092	.069	.050	.053	.040	.029	.017	.013	.010	
4.0	.148	.101	.066	.127	.088	.057	.088	.061	.040	.051	.036	.024	.016	.012	.008	
5.0	.141	.091	.054	.121	.078	.047	.083	.055	.033	.048	.032	.020	.016	.010	.006	
6.0	.133	.082	.045	.115	.071	.039	.079	.050	.028	.046	.029	.016	.015	.010	.005	
7.0	.127	.075	.038	.109	.065	.033	.075	.045	.024	.044	.027	.014	.014	.009	.005	
8.0	.121	.069	.033	.104	.060	.029	.072	.042	.020	.042	.025	.012	.014	.008	.004	
9.0	.115	.064	.029	.099	.055	.025	.069	.039	.018	.040	.023	.011	.013	.008	.004	
10.0	.110	.059	.026	.095	.052	.023	.066	.036	.016	.038	.021	.010	.012	.007	.003	

C Range: 0 - 360DEG
 C Interval: 22.5DEG
 Test Speed: HIGH
 Temperature:25.3DEG
 Operators:LXF
 Test Date:2021-04-07

γ Range: 0 - 180DEG
 γ Interval: 1.0DEG
 Test System:EVERFINE GO-2000A_V1 SYSTEM V2.0.295
 Humidity:25.0%
 Test Distance:7.560m [K=1.0000]
 Remarks:

UGR(Unified Glare Rating) Table

NAME: Panel light		TYPE:LED					WEIGHT:				
SPEC.:3012M		DIM.: 295*1195					SERIAL No.:				
MFR.: JT		SUR.:0.295*1.195					Shielding Angle:				
ceiling/cavity	0.7	0.7	0.5	0.5	0.3	0.7	0.7	0.5	0.5	0.3	
walls	0.5	0.3	0.5	0.3	0.3	0.5	0.3	0.5	0.3	0.3	
working plane	0.2	0.2	0.2	0.2	0.2	0.2	0.2	0.2	0.2	0.2	
Room dimensions	Viewed crosswise					Viewed endwise					
x = 2H y = 2H	13.5	14.7	13.7	14.9	15.1	13.4	14.7	13.7	14.9	15.1	
3H	14.3	15.5	14.6	15.7	15.9	14.3	15.4	14.5	15.7	15.9	
4H	14.8	15.9	15.1	16.1	16.4	14.7	15.8	15.0	16.1	16.3	
6H	15.2	16.3	15.6	16.6	16.8	15.2	16.3	15.5	16.5	16.8	
8H	15.4	16.4	15.8	16.7	17.0	15.4	16.4	15.7	16.7	17.0	
12H	15.6	16.5	15.9	16.8	17.1	15.5	16.5	15.8	16.8	17.1	
4H 2H	13.8	15.0	14.2	15.2	15.5	13.8	15.0	14.1	15.2	15.4	
3H	15.0	16.0	15.3	16.2	16.5	15.0	16.0	15.3	16.2	16.5	
4H	15.6	16.5	16.0	16.8	17.1	15.6	16.5	16.0	16.8	17.1	
6H	16.3	17.1	16.7	17.4	17.8	16.3	17.0	16.6	17.4	17.7	
8H	16.6	17.3	17.0	17.6	18.0	16.5	17.3	16.9	17.6	18.0	
12H	16.7	17.4	17.2	17.8	18.2	16.7	17.4	17.1	17.8	18.2	
8H 4H	15.9	16.7	16.4	17.0	17.4	15.9	16.7	16.3	17.0	17.4	
6H	16.8	17.5	17.3	17.9	18.3	16.8	17.4	17.3	17.8	18.3	
8H	17.3	17.8	17.7	18.2	18.7	17.2	17.8	17.7	18.2	18.6	
12H	17.6	18.0	18.0	18.5	18.9	17.5	18.0	18.0	18.4	18.9	
12H 4H	16.0	16.7	16.4	17.0	17.4	16.0	16.6	16.4	17.0	17.4	
6H	17.0	17.5	17.5	18.0	18.4	17.0	17.5	17.4	17.9	18.4	
8H	17.5	17.9	18.0	18.4	18.9	17.5	17.9	17.9	18.4	18.8	
Variations with the observer position at spacings:											
S = 1.0H	+ 0.4 / - 0.5					+ 0.4 / - 0.5					
1.5H	+ 0.3 / - 0.4					+ 0.3 / - 0.4					
2.0H	+ 0.9 / - 0.9					+ 0.8 / - 0.9					

CIE Pub.117 Corrected 3218 lm Total Lamp Luminous Flux.(8log(F/F0) = 4.1)

C Range: 0 - 360DEG
 C Interval: 22.5DEG
 Test Speed: HIGH
 Temperature:25.3DEG
 Operators:LXF
 Test Date:2021-04-07

γ Range: 0 - 180DEG
 γ Interval: 1.0DEG
 Test System:EVERFINE GO-2000A_V1 SYSTEM V2.0.295
 Humidity:25.0%
 Test Distance:7.560m [K=1.0000]
 Remarks:

UTILIZATION FACTORS TABLE

NAME: Panel light	TYPE:LED	WEIGHT:
SPEC.:3012M	DIM.: 295*1195	SERIAL No.:
MFR.: JT	SUR.:0.295*1.195	Shielding Angle:

REFLECTANCE										
Ceiling	0.8	0.8	0.8	0.7	0.7	0.7	0.5	0.5	0.5	0
Walls	0.7	0.5	0.3	0.7	0.5	0.3	0.7	0.5	0.3	0
Working plane	0.2	0.2	0.2	0.2	0.2	0.2	0.2	0.2	0.2	0
ROOM INDEX	UTILIZATION FACTORS(PERCENT) $k(RI) \times RCR = 5$									
k = 0.60	70	60	55	69	60	54	68	60	54	49
0.80	79	70	64	78	69	64	76	68	63	58
1.00	86	77	71	85	77	71	83	77	70	65
1.25	92	83	78	90	83	77	88	81	77	71
1.50	96	88	83	94	87	82	92	86	81	75
2.00	101	94	89	99	93	88	96	91	87	80
2.50	104	98	93	102	96	92	98	94	90	83
3.00	106	101	96	104	99	95	100	96	93	86
4.00	109	105	101	107	103	100	103	100	97	89
5.00	111	107	104	109	105	103	105	102	99	91
ROOM INDEX	UF(total)									Direct
According to DIN EN 13032-2 2004			Suspended				SHRNOM = 1.25			

C Range: 0 - 360DEG
 C Interval: 22.5DEG
 Test Speed: HIGH
 Temperature:25.3DEG
 Operators:LXF
 Test Date:2021-04-07

γ Range: 0 - 180DEG
 γ Interval: 1.0DEG
 Test System:EVERFINE GO-2000A_V1 SYSTEM V2.0.295
 Humidity:25.0%
 Test Distance:7.560m [K=1.0000]
 Remarks:

ISOCANDELA DIAGRAM

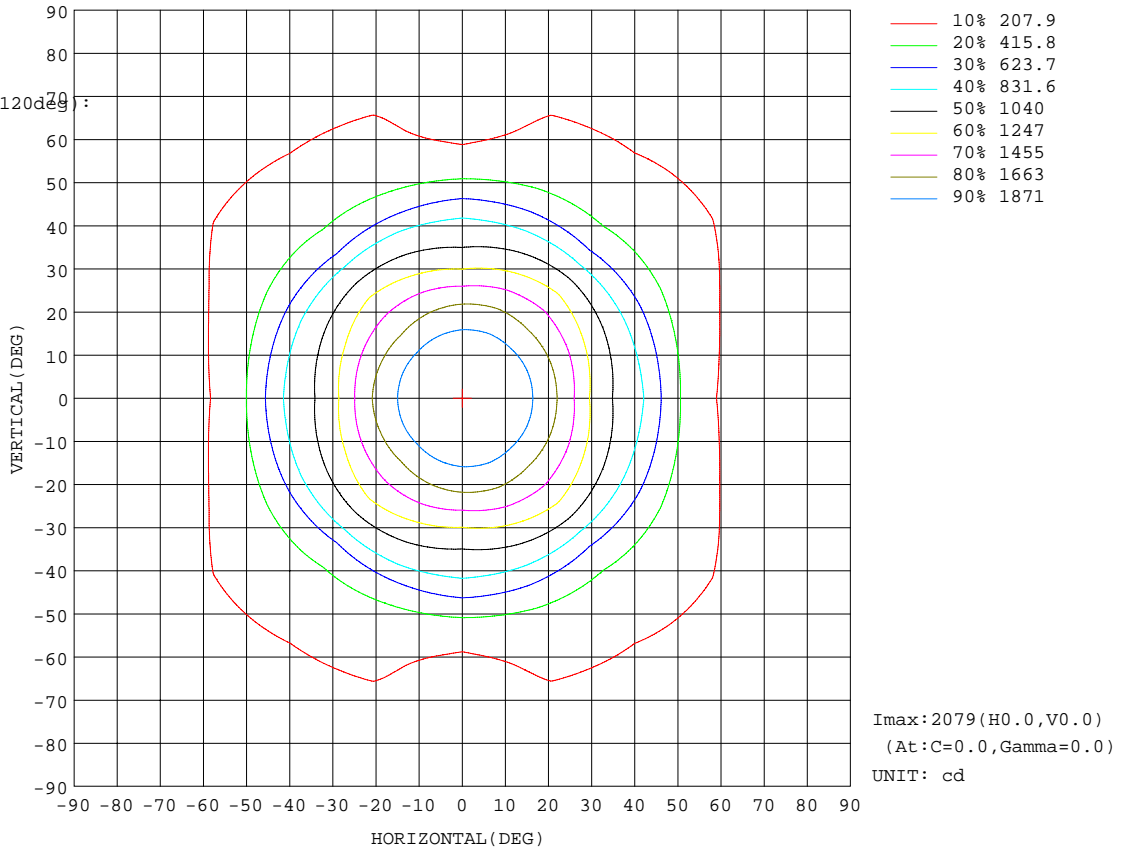
NAME: Panel light	TYPE:LED	WEIGHT:
SPEC.:3012M	DIM.: 295*1195	SERIAL No.:
MFR.: JT	SUR.:0.295*1.195	Shielding Angle:

Conical surface Flux(90deg):

2354.6 lm
 %lum = 73.2%
 %lamp = 73.2%

Conical surface Flux(120deg):

2845.9 lm
 %lum = 88.4%
 %lamp = 88.4%

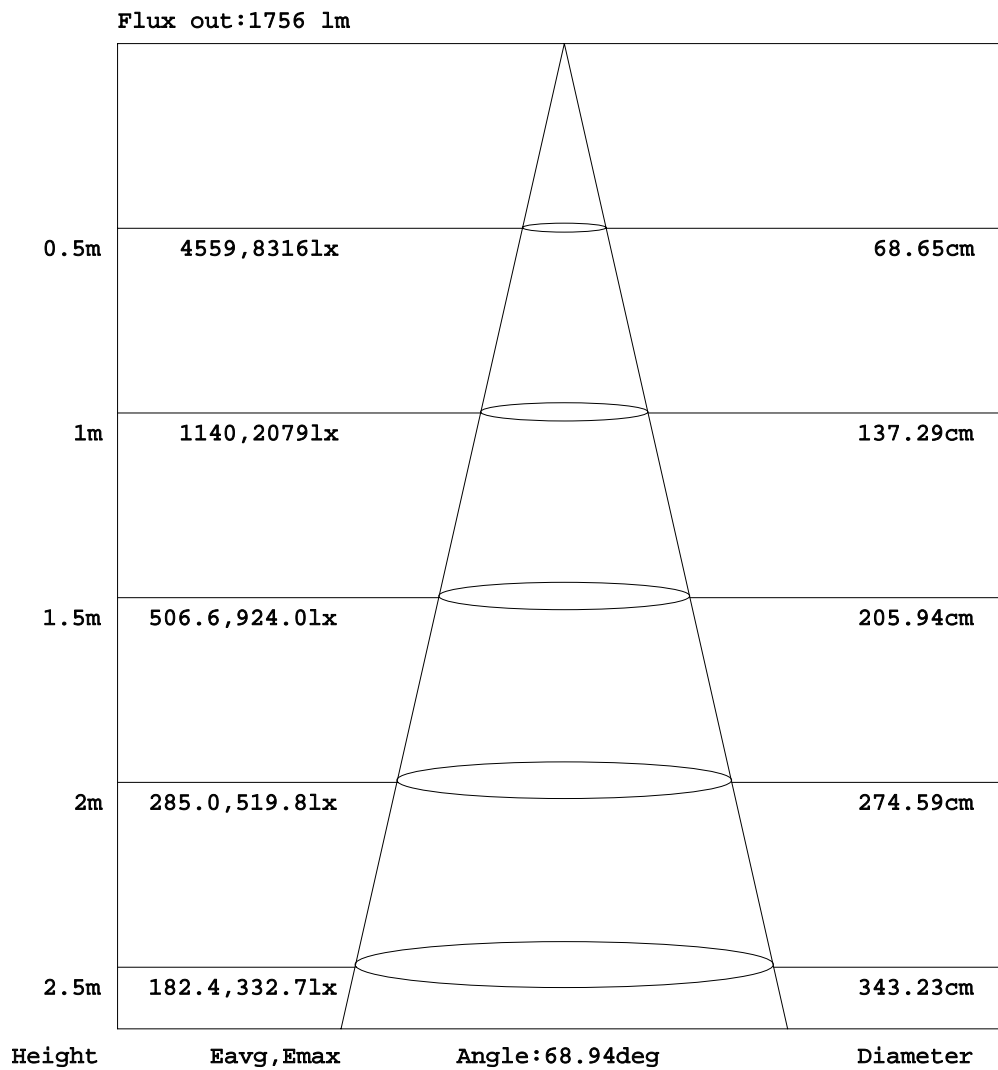


C Range: 0 - 360DEG
 C Interval: 22.5DEG
 Test Speed: HIGH
 Temperature: 25.3DEG
 Operators: LXF
 Test Date: 2021-04-07

γ Range: 0 - 180DEG
 γ Interval: 1.0DEG
 Test System: EVERFINE GO-2000A_V1 SYSTEM V2.0.295
 Humidity: 25.0%
 Test Distance: 7.560m [K=1.0000]
 Remarks:

AAI Figure

NAME: Panel light	TYPE:LED	WEIGHT:
SPEC.:3012M	DIM.: 295*1195	SERIAL No.:
MFR.: JT	SUR.:0.295*1.195	Shielding Angle:



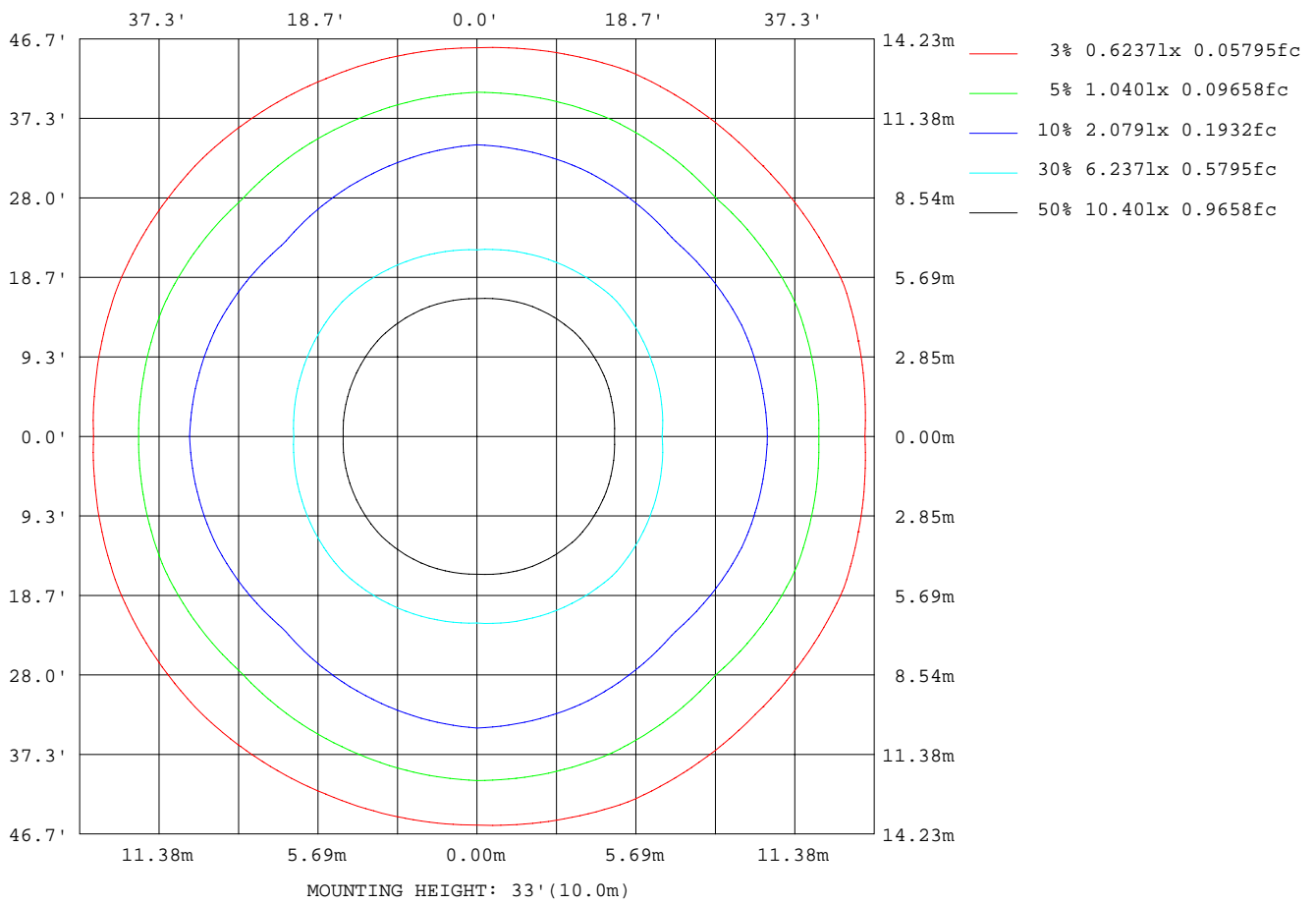
Note:The Curves indicate the illuminated area and the average illumination when the luminaire is at different distance.

C Range: 0 - 360DEG
 C Interval: 22.5DEG
 Test Speed: HIGH
 Temperature:25.3DEG
 Operators:LXF
 Test Date:2021-04-07

γ Range: 0 - 180DEG
 γ Interval: 1.0DEG
 Test System:EVERFINE GO-2000A_V1 SYSTEM V2.0.295
 Humidity:25.0%
 Test Distance:7.560m [K=1.0000]
 Remarks:

ISOLUX DIAGRAM

NAME: Panel light	TYPE:LED	WEIGHT:
SPEC.:3012M	DIM.: 295*1195	SERIAL No.:
MFR.: JT	SUR.:0.295*1.195	Shielding Angle:



C Range: 0 - 360DEG
 C Interval: 22.5DEG
 Test Speed: HIGH
 Temperature:25.3DEG
 Operators:LXF
 Test Date:2021-04-07

γ Range: 0 - 180DEG
 γ Interval: 1.0DEG
 Test System:EVERFINE GO-2000A_V1 SYSTEM V2.0.295
 Humidity:25.0%
 Test Distance:7.560m [K=1.0000]
 Remarks:

LED Avg.L Report

NAME: Panel light	TYPE:LED	WEIGHT:
SPEC.:3012M	DIM.: 295*1195	SERIAL No.:
MFR.: JT	SUR.:0.295*1.195	Shielding Angle:

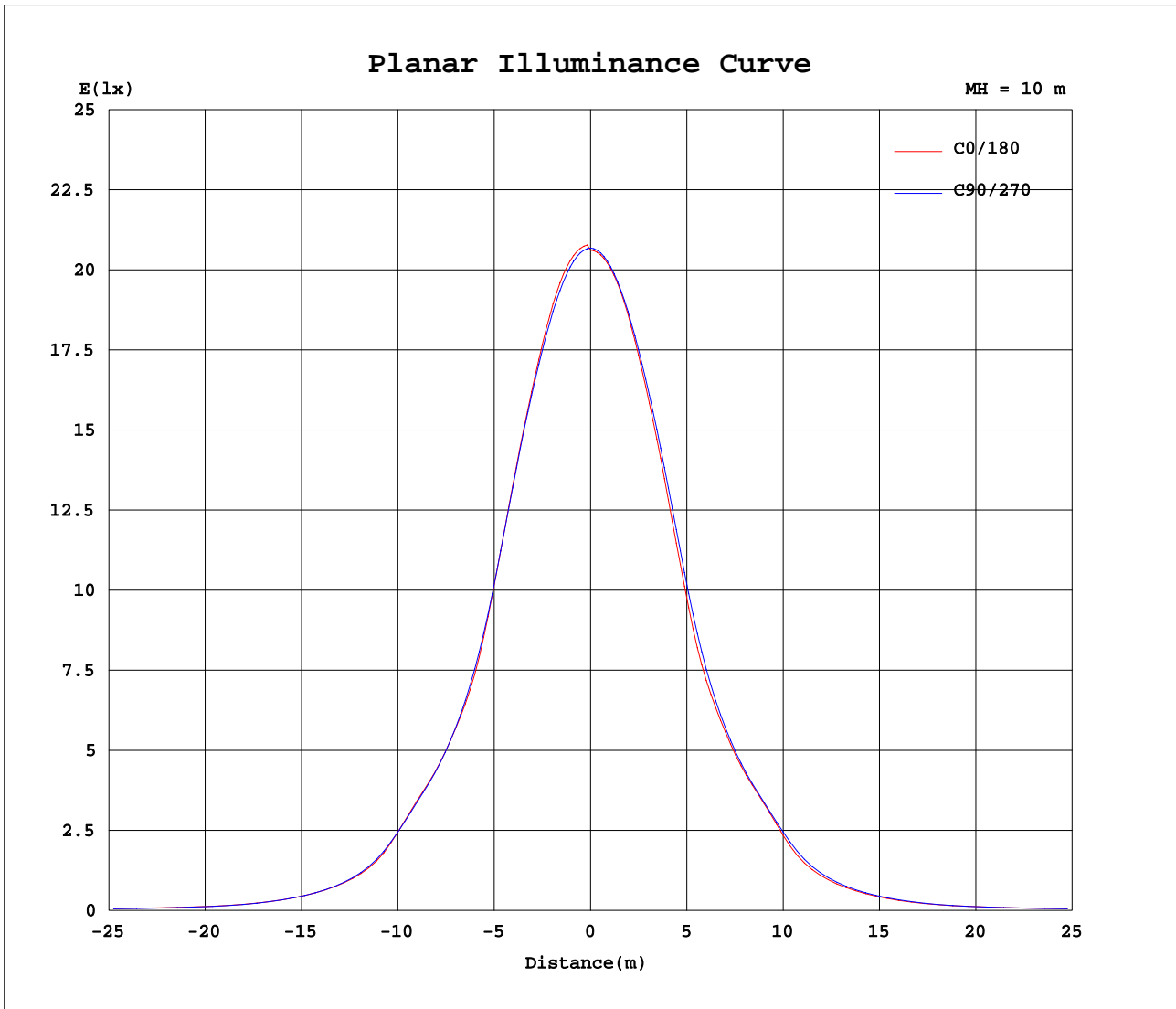
AvgL	cd/m2
L_0~180(65)av	874
L_0~180(75)av	1212
L_0~180(85)av	1087
L_90~270(65)av	832
L_90~270(75)av	1197
L_90~270(85)av	1088
L_45(65)av	1417
L_45(75)av	1381
L_45(85)av	1676

Standard: GB/T 29293-2012

C Range: 0 - 360DEG
C Interval: 22.5DEG
Test Speed: HIGH
Temperature:25.3DEG
Operators:LXF
Test Date:2021-04-07

γ Range: 0 - 180DEG
 γ Interval: 1.0DEG
Test System:EVERFINE GO-2000A_V1 SYSTEM V2.0.295
Humidity:25.0%
Test Distance:7.560m [K=1.0000]
Remarks:

Planar Illuminance Curve



C Range: 0 - 360DEG
 C Interval: 22.5DEG
 Test Speed: HIGH
 Temperature: 25.3DEG
 Operators: LXF
 Test Date: 2021-04-07

γ Range: 0 - 180DEG
 γ Interval: 1.0DEG
 Test System: EVERFINE GO-2000A_V1 SYSTEM V2.0.295
 Humidity: 25.0%
 Test Distance: 7.560m [K=1.0000]
 Remarks:

LUMINOUS DISTRIBUTION INTENSITY DATA

NAME: Panel light	TYPE:LED	WEIGHT:
SPEC.:3012M	DIM.: 295*1195	SERIAL No.:
MFR.: JT	SUR.:0.295*1.195	Shielding Angle:

Table--1

UNIT: cd

C(DEG) γ (DEG)	0	22.5	45	67.5	90	112.5	135	157.5	180	202.5	225	247.5	270	292.5	315	337.5			
0	2079	2074	2073	2069	2068	2066	2065	2063	2062	2063	2065	2066	2068	2069	2073	2074			
5	2068	2062	2058	2053	2050	2047	2046	2045	2045	2045	2046	2047	2050	2053	2058	2062			
10	2019	2013	2005	1999	1994	1987	1983	1984	1986	1984	1983	1987	1994	1999	2005	2013			
15	1910	1908	1902	1901	1893	1880	1867	1869	1871	1869	1867	1880	1893	1901	1902	1908			
20	1749	1743	1734	1748	1740	1709	1675	1684	1703	1684	1675	1709	1740	1748	1734	1743			
25	1508	1539	1547	1547	1508	1506	1488	1471	1452	1471	1488	1506	1508	1547	1547	1539			
30	1219	1289	1356	1307	1244	1269	1304	1229	1180	1229	1304	1269	1244	1307	1356	1289			
35	1034	1075	1120	1081	1038	1059	1070	1043	1014	1043	1070	1059	1038	1081	1120	1075			
40	891	883	851	880	883	872	831	867	873	867	831	872	883	880	851	883			
45	693	650	577	647	692	611	539	612	664	612	539	611	692	647	577	650			
50	436	453	410	445	448	418	394	423	418	423	394	418	448	445	410	453			
55	295	325	315	321	295	302	309	305	280	305	309	302	295	321	315	325			
60	188	269	248	268	185	258	244	254	178	254	244	258	185	268	248	269			
65	133	225	210	229	123	228	209	217	126	217	209	228	123	229	210	225			
70	119	169	167	174	111	172	165	164	116	164	165	172	111	174	167	169			
75	112	118	126	116	108	115	124	113	108	113	124	115	108	116	126	118			
80	78.6	86.4	106	85.6	78.2	86.4	106	82.2	73.8	82.2	106	86.4	78.2	85.6	106	86.4			
85	34.9	45.5	52.9	45.5	33.2	43.5	49.3	42.2	31.4	42.2	49.3	43.5	33.2	45.5	52.9	45.5			
90	0.85	0.82	0.39	0.24	0.22	6.79	0.39	0.59	0.56	0.59	0.39	6.79	0.22	0.24	0.39	0.82			
95	0.17	0.20	0.23	0.24	0.18	0.24	0.27	0.21	0.36	0.21	0.27	0.24	0.18	0.24	0.23	0.20			
100	0.17	0.24	0.24	0.28	0.21	0.29	0.27	0.25	0.17	0.25	0.27	0.29	0.21	0.28	0.24	0.24			
105	0.23	0.30	0.31	0.33	0.29	0.34	0.31	0.30	0.23	0.30	0.31	0.34	0.29	0.33	0.31	0.30			
110	0.30	0.37	0.39	0.42	0.38	0.42	0.37	0.38	0.32	0.38	0.37	0.42	0.38	0.42	0.39	0.37			
115	0.41	0.47	0.48	0.53	0.51	0.54	0.49	0.48	0.42	0.48	0.49	0.54	0.51	0.53	0.48	0.47			
120	0.55	0.59	0.61	0.68	0.65	0.68	0.63	0.63	0.57	0.63	0.63	0.68	0.65	0.68	0.61	0.59			
125	0.71	0.77	0.79	0.85	0.82	0.84	0.81	0.80	0.75	0.80	0.81	0.84	0.82	0.85	0.79	0.77			
130	0.90	0.95	0.97	1.05	1.01	1.03	1.00	1.00	0.94	1.00	1.00	1.03	1.01	1.05	0.97	0.95			
135	1.08	1.15	1.19	1.23	1.19	1.22	1.20	1.21	1.14	1.21	1.20	1.22	1.19	1.23	1.19	1.15			
140	1.29	1.38	1.40	1.44	1.39	1.43	1.40	1.41	1.35	1.41	1.40	1.43	1.39	1.44	1.40	1.38			
145	1.51	1.61	1.60	1.63	1.60	1.63	1.58	1.61	1.57	1.61	1.58	1.63	1.60	1.63	1.60	1.61			
150	1.75	1.85	1.83	1.86	1.82	1.84	1.79	1.84	1.82	1.84	1.79	1.84	1.82	1.86	1.83	1.85			
155	2.00	2.10	2.05	2.08	2.05	2.07	2.02	2.06	2.07	2.06	2.02	2.07	2.05	2.08	2.05	2.10			
160	2.25	2.37	2.28	2.30	2.26	2.29	2.25	2.28	2.31	2.28	2.25	2.29	2.26	2.30	2.28	2.37			
165	2.49	2.60	2.48	2.48	2.45	2.50	2.45	2.49	2.55	2.49	2.45	2.50	2.45	2.48	2.48	2.60			
170	2.71	2.79	2.66	2.64	2.62	2.66	2.62	2.69	2.77	2.69	2.62	2.66	2.62	2.64	2.66	2.79			
175	2.90	2.92	2.78	2.77	2.74	2.78	2.75	2.85	2.91	2.85	2.75	2.78	2.74	2.77	2.78	2.92			
180	2.98	2.97	2.86	2.84	2.82	2.82	2.83	2.90	2.97	2.90	2.83	2.82	2.82	2.84	2.86	2.97			

C Range: 0 - 360DEG
 C Interval: 22.5DEG
 Test Speed: HIGH
 Temperature:25.3DEG
 Operators:LXF
 Test Date:2021-04-07

γ Range: 0 - 180DEG
 γ Interval: 1.0DEG
 Test System:EVERFINE GO-2000A_V1 SYSTEM V2.0.295
 Humidity:25.0%
 Test Distance:7.560m [K=1.0000]
 Remarks: