

**Colorimetric Parameters**

Chromaticity Coordinate: x=0.3485 y=0.3609/u'=0.2101 v'=0.4896 Dx, Dy: 0.0007, 0.0072  
 CCT=4908K (Duv=0.0033) Dominant WL: Ld =571.0nm Purity=12.9%  
 Peak WL: Lp=446.3nm FWHM=19.7nm  
 Render Index: Ra=71.8 Lav=554.7nm Render Index: AvgR =61.6  
 R1 =70 R2 =76 R3 =80 R4 =73 R5 =70 R6 =67 R7 =81  
 R8 =58 R9 =-27 R10=42 R11=71 R12=41 R13=70 R14=89 R15=64

**Photometric & Radiometric Parameters**

Flux=21093 lm Eff.:137.76 lm/W Fe=62.47 W Scotopic:36369 S/P:1.7242  
 Emol(μmol/s):286.12 Fluo. and blue light ratio:3.238 Fluorescent eff.:303.6

**Electrical parameters**

V=229.6 V I=0.6849 A P=153.1 W PF=0.9737 F=49.99 Hz  
 LEVEL:OUT WHITE:ANSI\_5000K  
 Photosynthetic: PPF(400-700nm):279.76μmol/s  
 PRF(400-700nm):61389mW  
 Eff(PPF) (400-700nm):1.83μmol/s/W

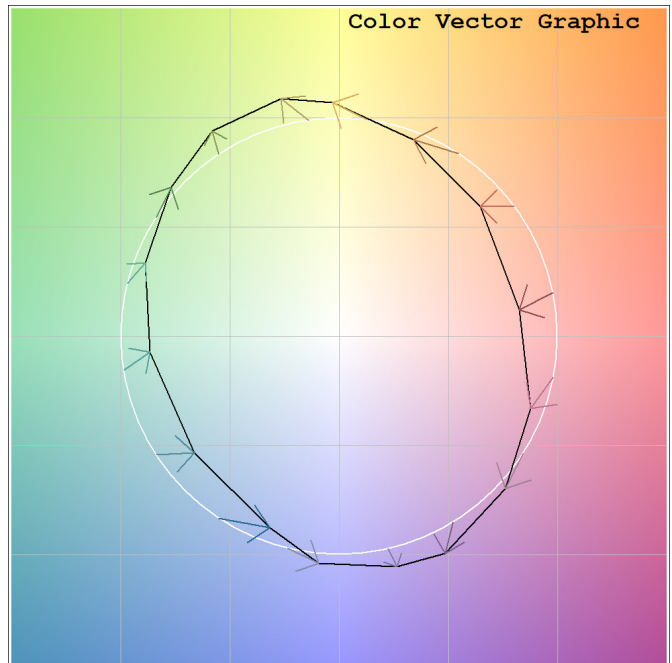
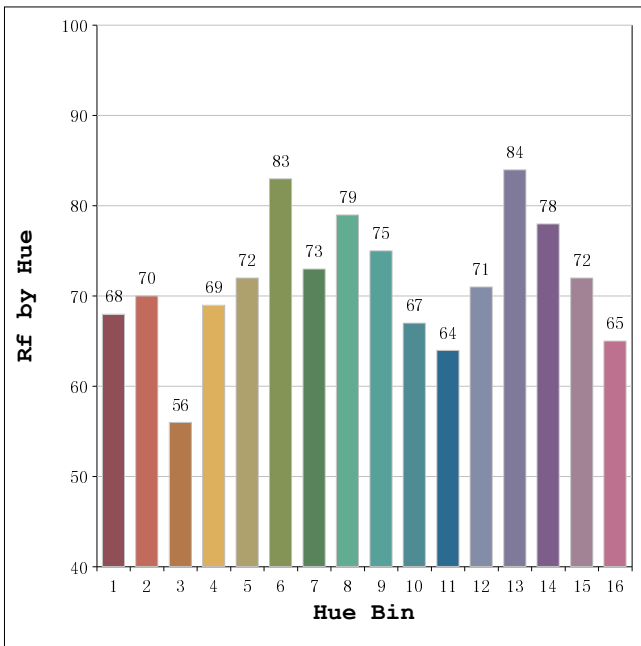
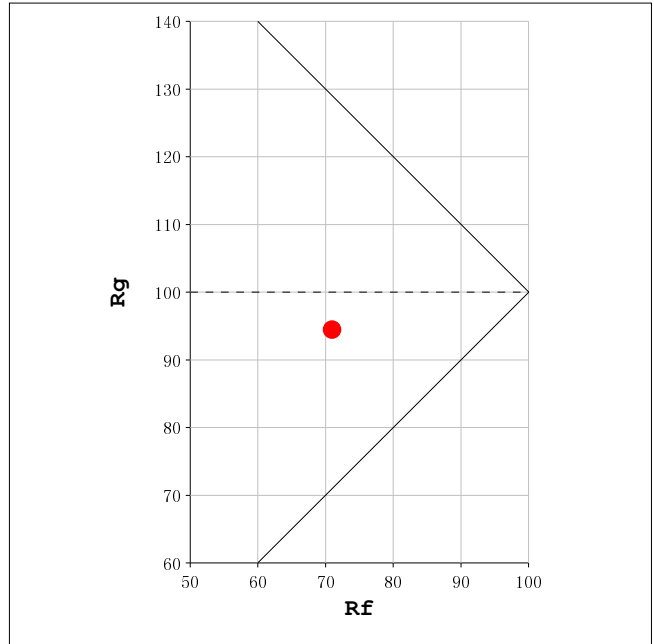
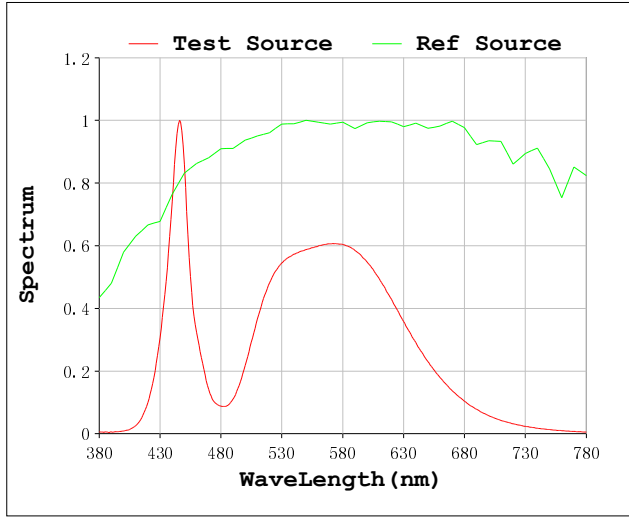
Status: Integral T = 121 ms Ip = 55088 (84%)

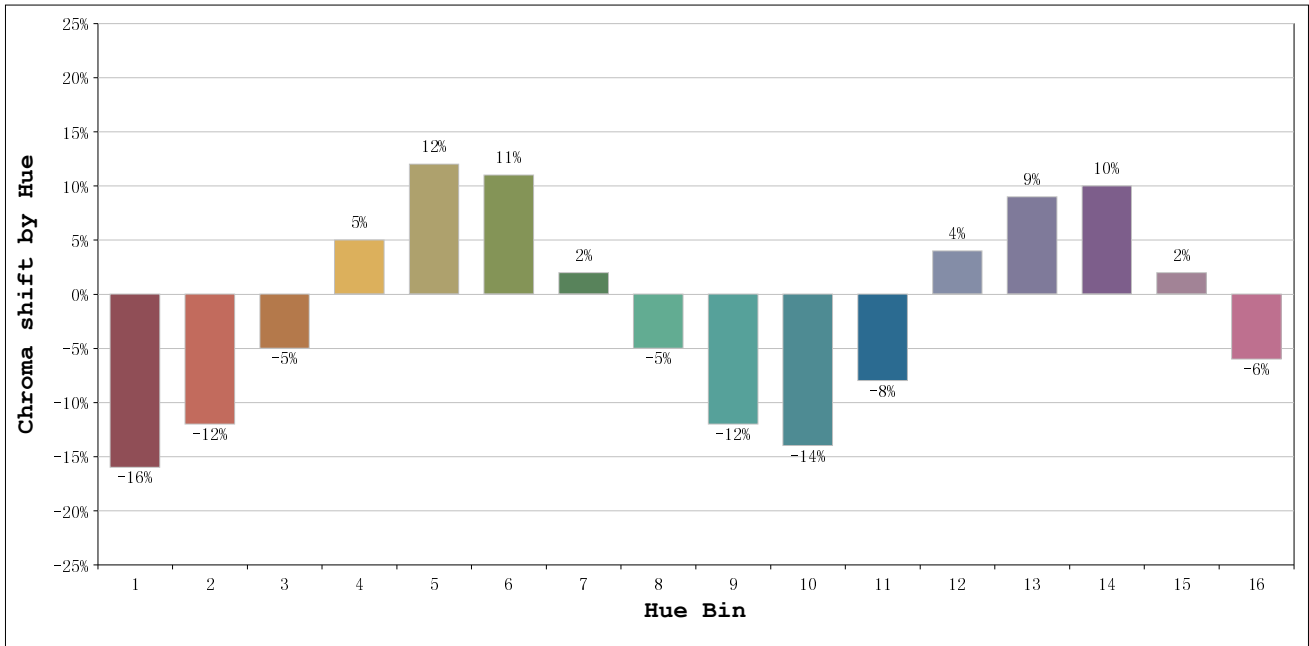
Test Mode: Accuracy Test; Sensitivity = Low; Tecool: ON

Model:LHB10-150/T  
 Test By:  
 Temperature:25.3Deg  
 Manufacturer:  
 Assessor:damin

Number:2  
 Date:2018-12-26 15:33:02  
 Humidity:65.0%  
 Remarks:  
 Standard:

Rf: 71      CCT: 4908 K      u': 0.2101  
 Rg: 94      Duv: 0.0033      v': 0.4896





Hue Bin	Hue Angle	Rf	Graphic shift(%)	
			Chroma	Hue
1	0.0° - 22.5°	68	-16	-4
2	22.5° - 45.0°	70	-12	8
3	45.0° - 67.5°	56	-5	21
4	67.5° - 90.0°	69	5	17
5	90.0° - 112.5°	72	12	11
6	112.5° - 135.0°	83	11	-2
7	135.0° - 157.5°	73	2	-14
8	157.5° - 180.0°	79	-5	-10
9	180.0° - 202.5°	75	-12	-5
10	202.5° - 225.0°	67	-14	9
11	225.0° - 247.5°	64	-8	22
12	247.5° - 270.0°	71	4	15
13	270.0° - 292.5°	84	9	2
14	292.5° - 315.0°	78	10	-10
15	315.0° - 337.5°	72	2	-17
16	337.5° - 360.0°	65	-6	-15