

Colorimetric Parameters

Chromaticity Coordinate:x=0.3450 y=0.3533/u'=0.2107 v'=0.4855 Dx,Dy:0.0002,0.0018
 CCT=5008K(Duv=0.0008) Dominant WL:Ld =571.8nm Purity=9.5%
 Peak WL:Lp=451.7nm FWHM=19.1nm
 Render Index:Ra=73.7 Lav=555.1nm Render Index:AvgR =63.9
 R1 =72 R2 =79 R3 =82 R4 =74 R5 =72 R6 =70 R7 =82
 R8 =59 R9 =-22 R10=48 R11=70 R12=43 R13=73 R14=90 R15=67

Photometric & Radiometric Parameters

Flux=13946 lm Eff.:134.75 lm/W Fe=41.82 W Scotopic:24946 S/P:1.7888
 Emol(μmol/s):191.9 Fluo. and blue light ratio:2.996 Fluorescent eff.:300.9

Electrical parameters

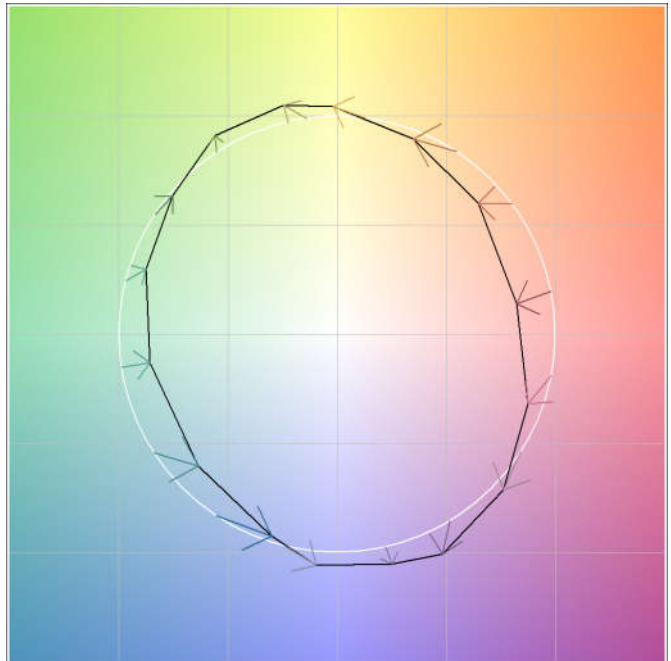
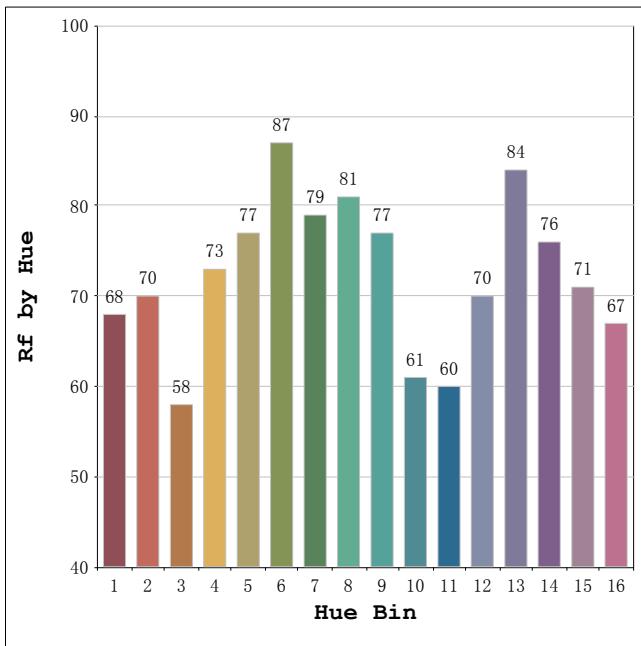
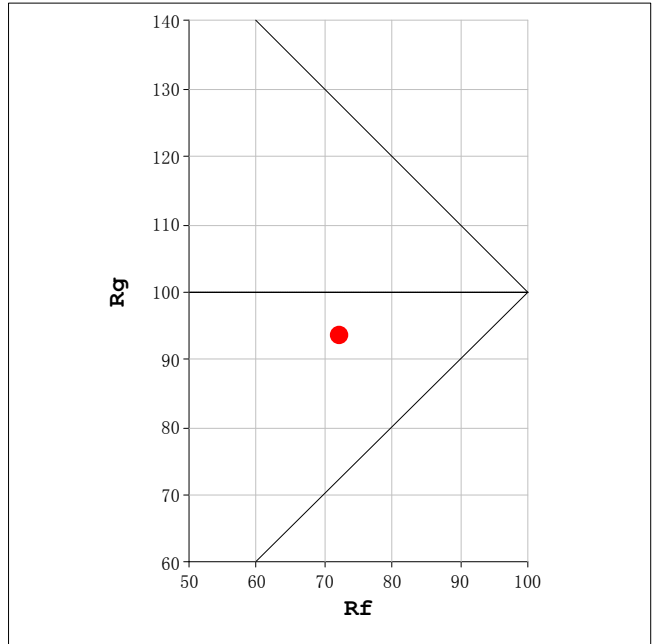
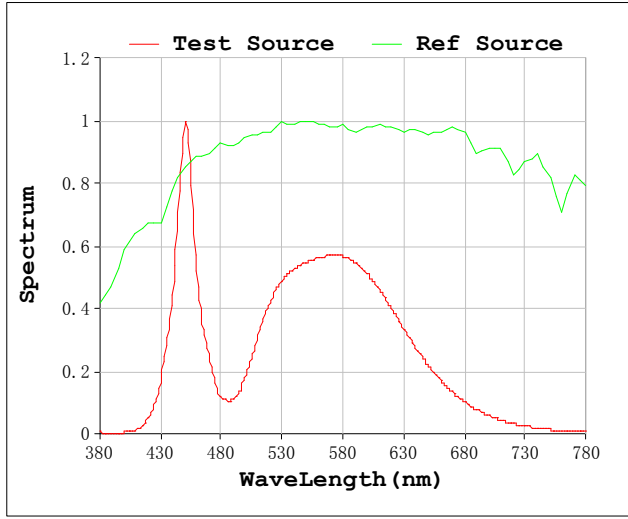
V=229.6 V I=0.4539 A P=103.5 W PF=0.9930 F=49.99 Hz
 LEVEL:OUT WHITE:5000K
 Photosynthetic:PPF(400-700nm):187.34μmol/s
 PRF(400-700nm):41050mW
 Eff(PPF) (400-700nm):1.81μmol/s/W

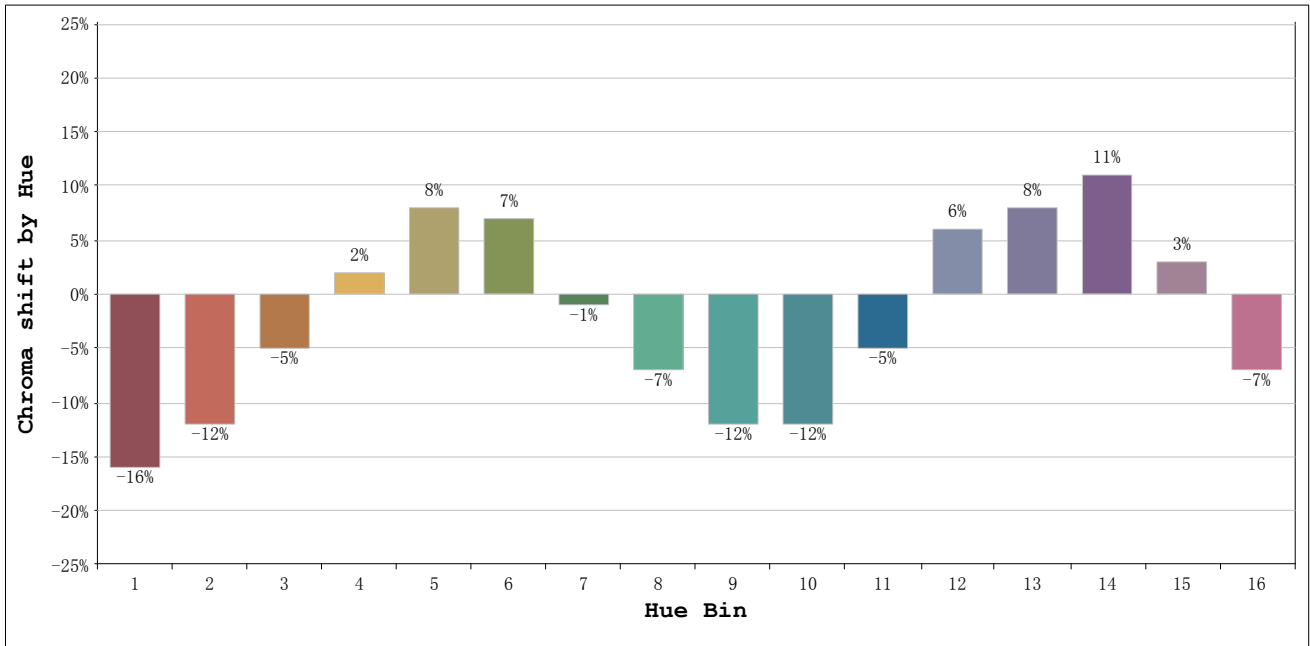
Status: Integral T = 121 ms Ip = 51394 (78%)
 Test Mode: Accuracy Test; Sensitivity = Low; Tecool: ON

Model:FL15-100
 Test By:
 Temperature:25.3Deg
 Manufacturer:

Number:2
 Date:2019-06-13 19:51:26
 Humidity:65.0%
 Remarks:
 Standard:

Rf: 72 CCT: 5008 K u': 0.2107
 Rg: 94 Duv: 0.0008 v': 0.4855





Hue Bin	Hue Angle	Rf	Graphic shift(%)	
			Chroma	Hue
1	0.0° - 22.5°	68	-16	-2
2	22.5° - 45.0°	70	-12	9
3	45.0° - 67.5°	58	-5	20
4	67.5° - 90.0°	73	2	16
5	90.0° - 112.5°	77	8	9
6	112.5° - 135.0°	87	7	-2
7	135.0° - 157.5°	79	-1	-11
8	157.5° - 180.0°	81	-7	-6
9	180.0° - 202.5°	77	-12	1
10	202.5° - 225.0°	61	-12	16
11	225.0° - 247.5°	60	-5	26
12	247.5° - 270.0°	70	6	16
13	270.0° - 292.5°	84	8	2
14	292.5° - 315.0°	76	11	-10
15	315.0° - 337.5°	71	3	-18
16	337.5° - 360.0°	67	-7	-13