

Colorimetric Parameters

Chromaticity Coordinate: x=0.3454 y=0.3556/u'=0.2101 v'=0.4866 Dx,Dy:0.0003,0.0040
 CCT=5003K(Duv=0.0019) Dominant WL:Ld =570.9nm Purity=10.3%
 Peak WL:Lp=449.4nm FWHM=17.7nm
 Render Index:Ra=72.2 Lav=554.9nm Render Index:AvgR =62.1
 R1 =70 R2 =77 R3 =80 R4 =73 R5 =71 R6 =68 R7 =81
 R8 =58 R9 =-26 R10=43 R11=70 R12=41 R13=71 R14=89 R15=65

Photometric & Radiometric Parameters

Flux=20094 lm Eff.:134.17 lm/W Fe=59.76 W Scotopic:35319 S/P:1.7577
 Emol(μmol/s):274.02 Fluo. and blue light ratio:3.072 Fluorescent eff.:297.6

Electrical parameters

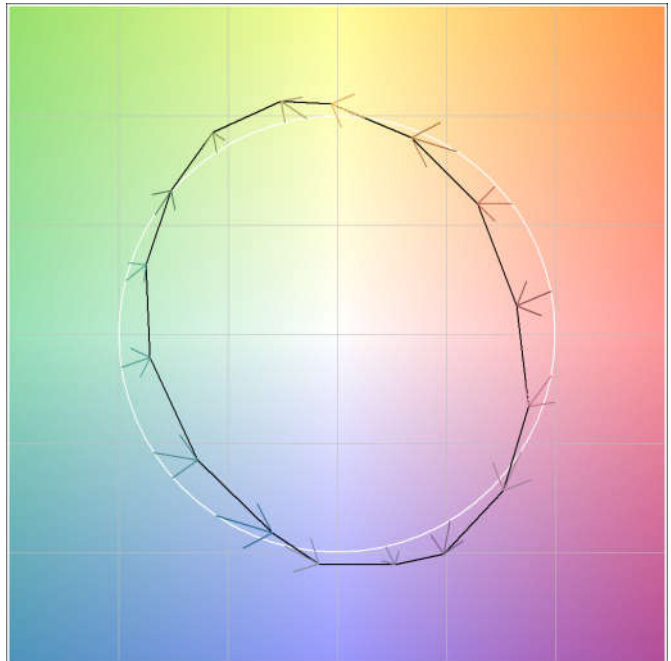
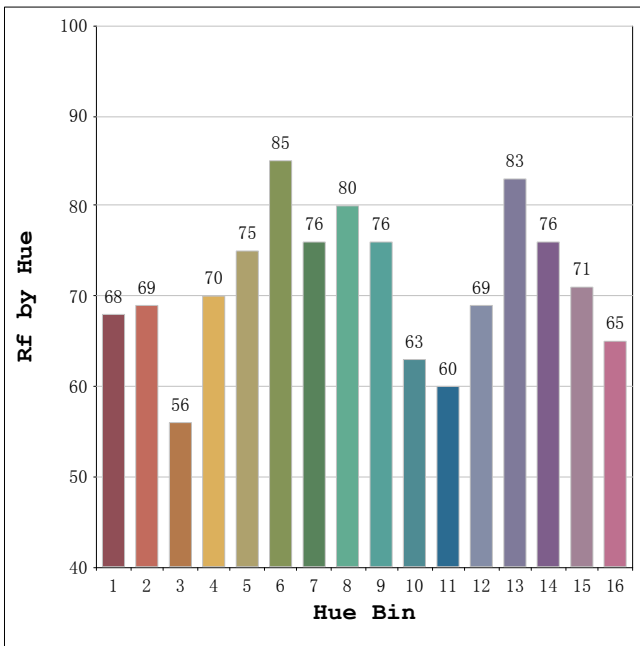
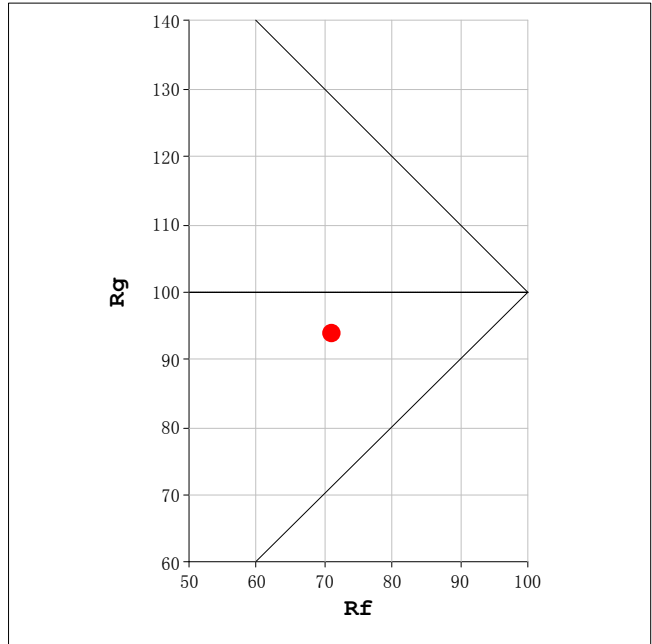
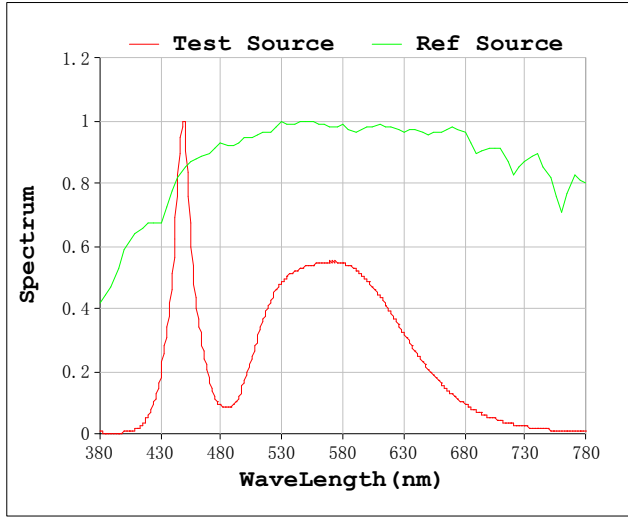
V=229.6 V I=0.6599 A P=149.8 W PF=0.9884 F=49.99 Hz
 LEVEL:OUT WHITE:ANSI_5000K
 Photosynthetic:PPF(400-700nm):267.57μmol/s
 PRF(400-700nm):58673mW
 Eff(PPF) (400-700nm):1.79μmol/s/W

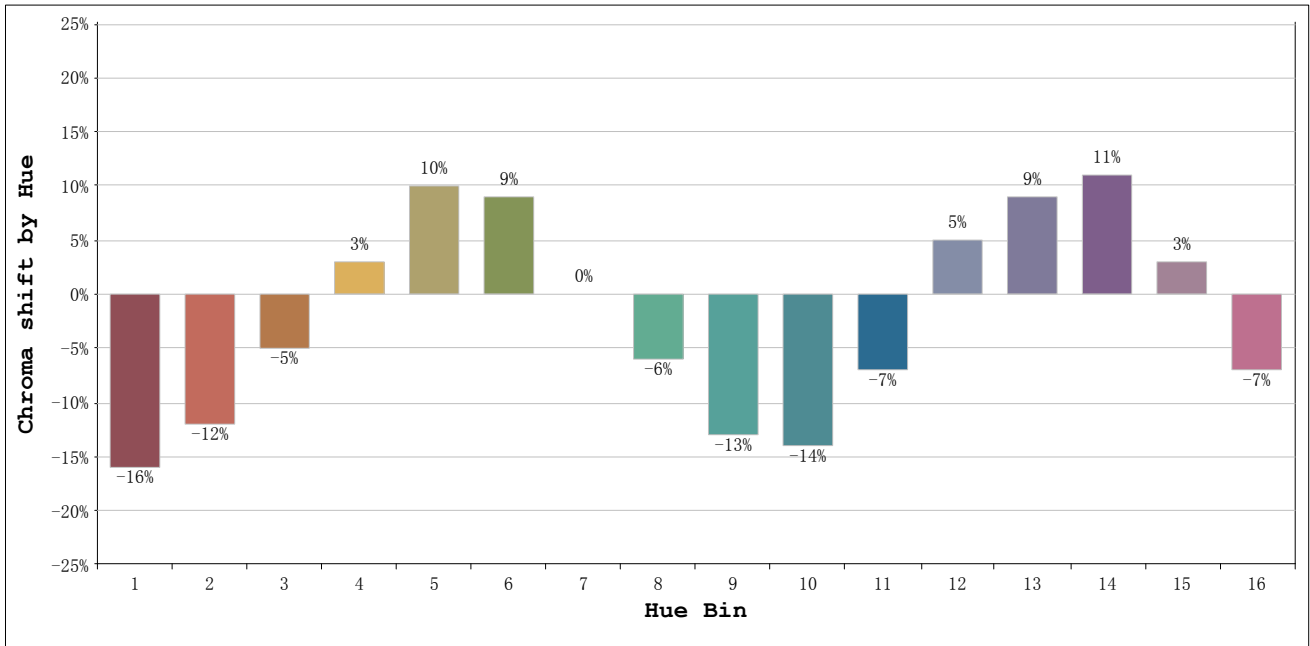
Status: Integral T = 83 ms Ip = 49630 (76%)
 Test Mode: Accuracy Test; Sensitivity = Low; Tecool: ON

Model:FL15-150
 Test By:
 Temperature:25.3Deg
 Manufacturer:

Number:3
 Date:2019-06-28 16:43:44
 Humidity:65.0%
 Remarks:
 Standard:

Rf: 71 CCT: 5003 K u': 0.2101
 Rg: 94 Duv: 0.0019 v': 0.4866





Hue Bin	Hue Angle	Rf	Graphic shift(%)	
			Chroma	Hue
1	0.0° - 22.5°	68	-16	-3
2	22.5° - 45.0°	69	-12	9
3	45.0° - 67.5°	56	-5	21
4	67.5° - 90.0°	70	3	17
5	90.0° - 112.5°	75	10	10
6	112.5° - 135.0°	85	9	-3
7	135.0° - 157.5°	76	0	-12
8	157.5° - 180.0°	80	-6	-8
9	180.0° - 202.5°	76	-13	-1
10	202.5° - 225.0°	63	-14	14
11	225.0° - 247.5°	60	-7	26
12	247.5° - 270.0°	69	5	17
13	270.0° - 292.5°	83	9	2
14	292.5° - 315.0°	76	11	-10
15	315.0° - 337.5°	71	3	-18
16	337.5° - 360.0°	65	-7	-14