

Colorimetric Parameters

Chromaticity Coordinate: x=0.3476 y=0.3551/u'=0.2118 v'=0.4868 Dx, Dy: 0.0002, 0.0016
 CCT=4918K (Duv=0.0008) Dominant WL: Ld = 573.0nm Purity=10.9%
 Peak WL: Lp=448.6nm FWHM=17.9nm
 Render Index: Ra=73.2 Lav=556.8nm Render Index: AvgR = 63.6
 R1 =72 R2 =77 R3 =79 R4 =74 R5 =72 R6 =67 R7 =82
 R8 =63 R9 =-13 R10=43 R11=71 R12=38 R13=72 R14=88 R15=68

Photometric & Radiometric Parameters

Flux=27182 lm Eff.: 136.32 lm/W Fe=82.16 W Scotopic: 47100 S/P: 1.7328
 Fmol (μmol/s): 378.38 Fluo. and blue light ratio: 3.163 Fluorescent eff.: 309.2

Electrical parameters

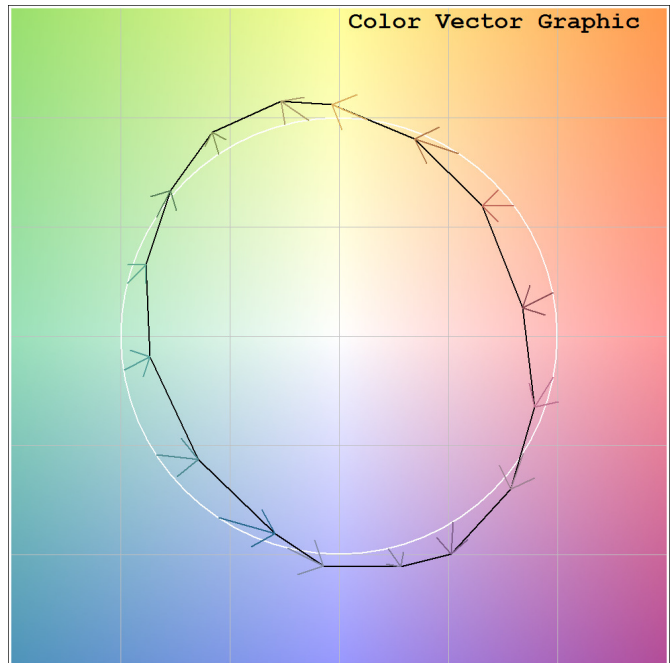
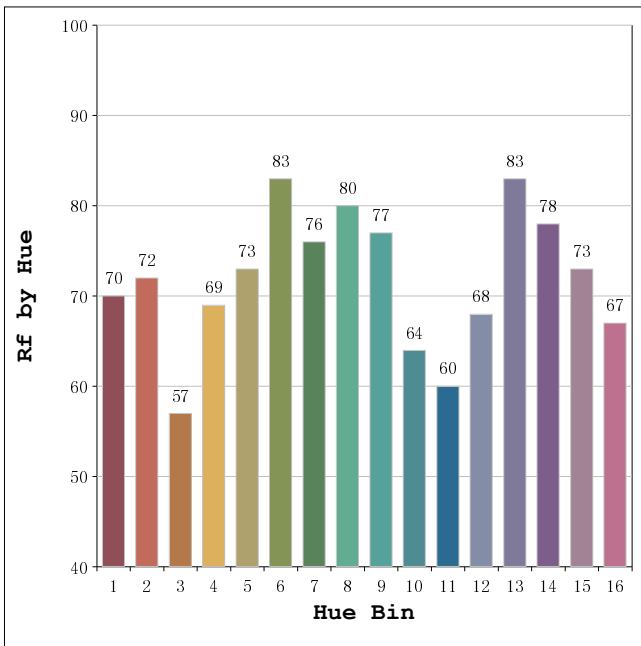
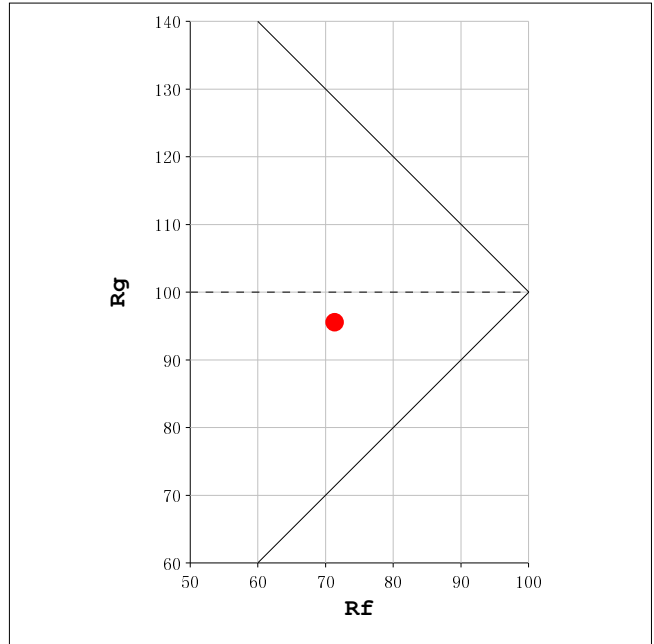
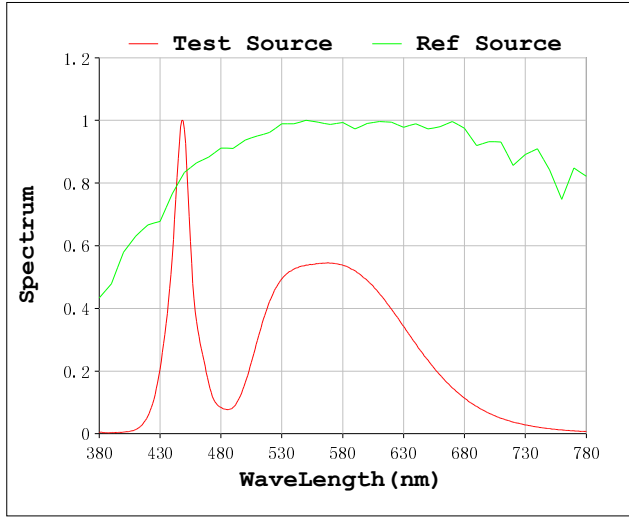
V=229.7 V I=0.8790 A P=199.4 W PF=0.9877 F=49.99 Hz
 LEVEL: OUT WHITE: ANSI_5000K
 Photosynthetic: PPF (400-700nm): 367.77 μmol/s
 PRF (400-700nm): 80375mW
 Eff (PPF) (400-700nm): 1.84 μmol/s/W

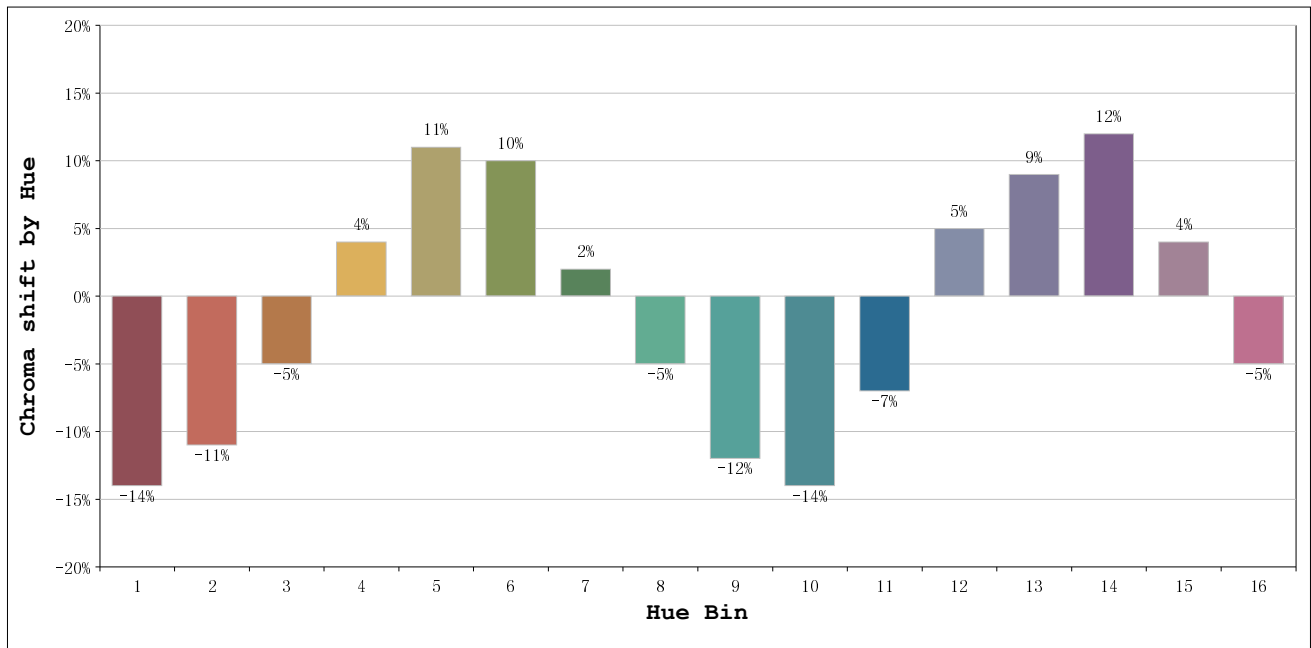
Status: Integral T = 73 ms Ip = 49725 (76%)
 Test Mode: Accuracy Test; Sensitivity = Low; Tecool: ON

Model: FL13-200
 Test By:
 Temperature: 25.3Deg
 Manufacturer:
 Assessor: damin

Number: 3
 Date: 2018-12-27 15:04:18
 Humidity: 65.0%
 Remarks:
 Standard:

Rf: 71 CCT: 4918 K u': 0.2118
 Rg: 96 Duv: 0.0008 v': 0.4868





Hue Bin	Hue Angle	Rf	Graphic shift(%)	
			Chroma	Hue
1	0.0° - 22.5°	70	-14	-3
2	22.5° - 45.0°	72	-11	8
3	45.0° - 67.5°	57	-5	20
4	67.5° - 90.0°	69	4	17
5	90.0° - 112.5°	73	11	11
6	112.5° - 135.0°	83	10	-2
7	135.0° - 157.5°	76	2	-13
8	157.5° - 180.0°	80	-5	-9
9	180.0° - 202.5°	77	-12	-3
10	202.5° - 225.0°	64	-14	12
11	225.0° - 247.5°	60	-7	25
12	247.5° - 270.0°	68	5	18
13	270.0° - 292.5°	83	9	4
14	292.5° - 315.0°	78	12	-8
15	315.0° - 337.5°	73	4	-16
16	337.5° - 360.0°	67	-5	-14