

**Colorimetric Parameters**

Chromaticity Coordinate: x=0.4434 y=0.4019/u'=0.2557 v'=0.5215 Dx, Dy: -0.0026, -0.0051  
 CCT=2876K (Duv=-0.0017) Dominant WL: Ld =584.0nm Purity=53.7%  
 Peak WL: Lp=590.6nm FWHM=104.7nm  
 Render Index: Ra=69.2 Lav=587.1nm Render Index: AvgR =60.1  
 R1 =65 R2 =83 R3 =94 R4 =61 R5 =64 R6 =75 R7 =74  
 R8 =38 R9 =-39 R10=61 R11=53 R12=50 R13=68 R14=97 R15=58

**Photometric & Radiometric Parameters**

Flux=3746 lm Eff.:120.86 lm/W Fe=10.76 W  
 Emol(μmol/s):52.121 Fluo. and blue light ratio:7.609 Fluorescent eff.:292.1

**Electrical parameters**

V=229.9 V I=0.1417 A P=31.00 W PF=0.9518 F=49.99 Hz  
 LEVEL:OUT WHITE:ANSI\_3000K  
 Photosynthetic: PPF(400-700nm):50.333μmol/s  
 PRF(400-700nm):10466mW  
 Eff(PPF) (400-700nm):1.62μmol/s/W

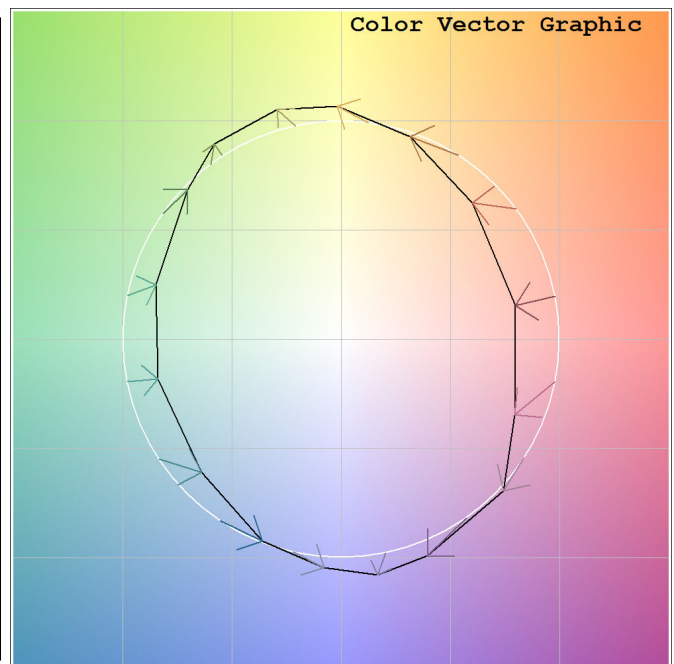
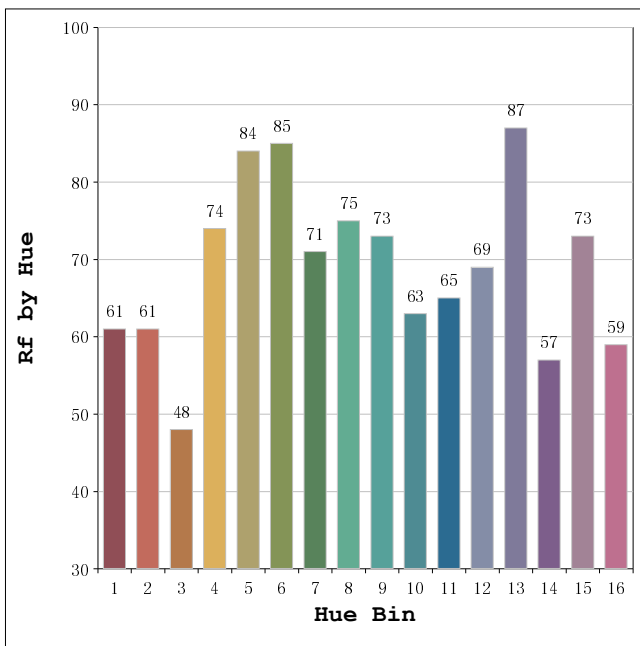
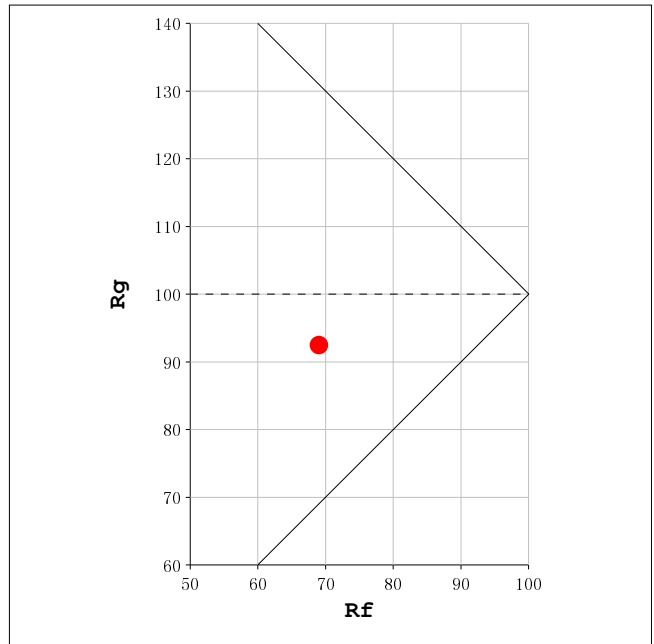
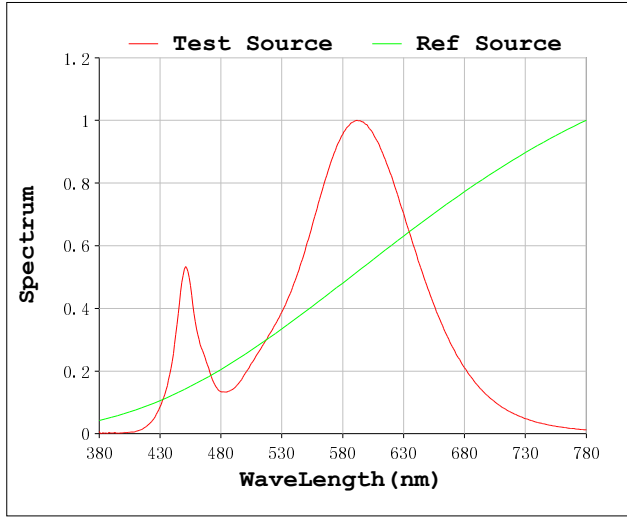
Status: Integral T = 281 ms Ip = 48493 (74%)

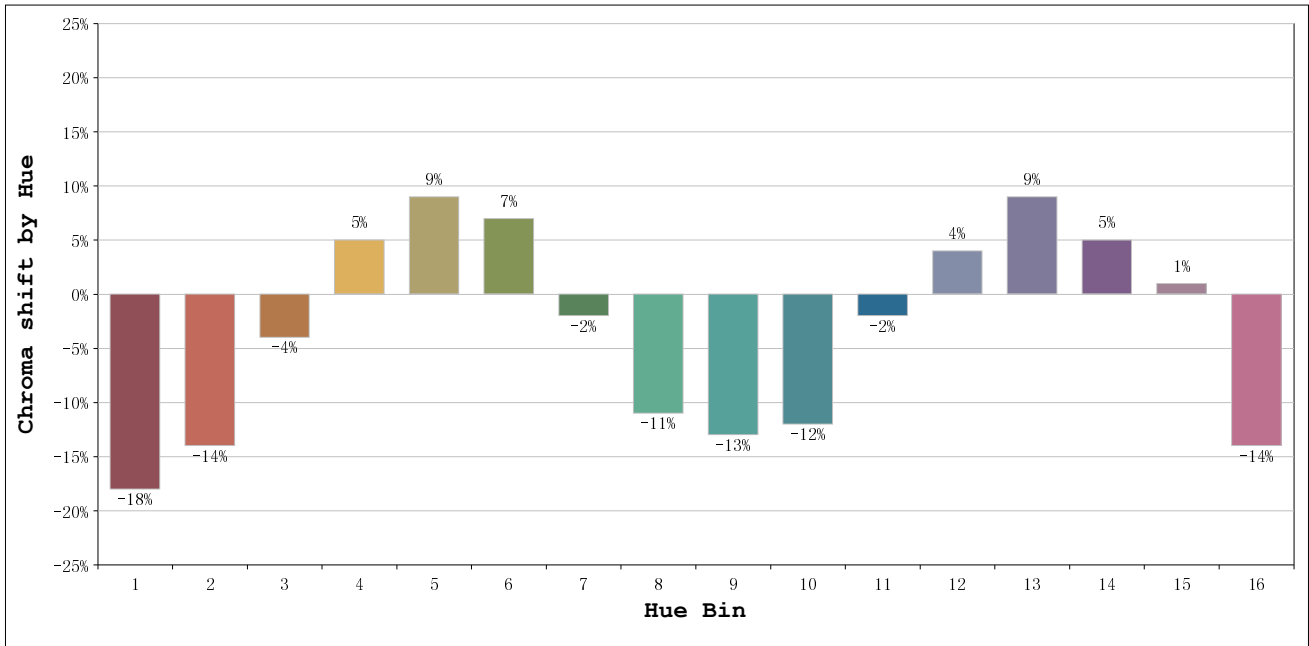
Test Mode: Accuracy Test; Sensitivity = Low; Tecool: ON

Model:UWP05-30  
 Test By:  
 Temperature:25.3Deg  
 Manufacturer:  
 Assessor:damin

Number:2  
 Date:2020-01-10 09:21:30  
 Humidity:65.0%  
 Remarks:  
 Standard:

Rf: 69      CCT: 2876 K      u': 0.2557  
 Rg: 92      Duv: -0.0017      v': 0.5215





Hue Bin	Hue Angle	Rf	Graphic shift(%)	
			Chroma	Hue
1	0.0° - 22.5°	61	-18	0
2	22.5° - 45.0°	61	-14	13
3	45.0° - 67.5°	48	-4	23
4	67.5° - 90.0°	74	5	16
5	90.0° - 112.5°	84	9	7
6	112.5° - 135.0°	85	7	-6
7	135.0° - 157.5°	71	-2	-15
8	157.5° - 180.0°	75	-11	-6
9	180.0° - 202.5°	73	-13	2
10	202.5° - 225.0°	63	-12	16
11	225.0° - 247.5°	65	-2	21
12	247.5° - 270.0°	69	4	15
13	270.0° - 292.5°	87	9	-5
14	292.5° - 315.0°	57	5	-23
15	315.0° - 337.5°	73	1	-17
16	337.5° - 360.0°	59	-14	-18